

XX p1

SUPER SAVER  
GOLDEN PRODUCTION-EXCHANGE RATE KY

ADMIRAL LYNCH

M 16

1 Race 2

3 RACES 18

10 RACES 19

16-

Vwtf MSGP 30

..16-

MSGP 9

MALE 3YO 11DEC TCK

7+

VW AWPPE 30

11+

AWPX TCK

F 22-

YsS[ MSPEJNo

11-

Yt AWPX 15

10

w AWPX 3

13-

AWMT 11

16-

Y AWMT 3

12"

v AWBE 23

11-

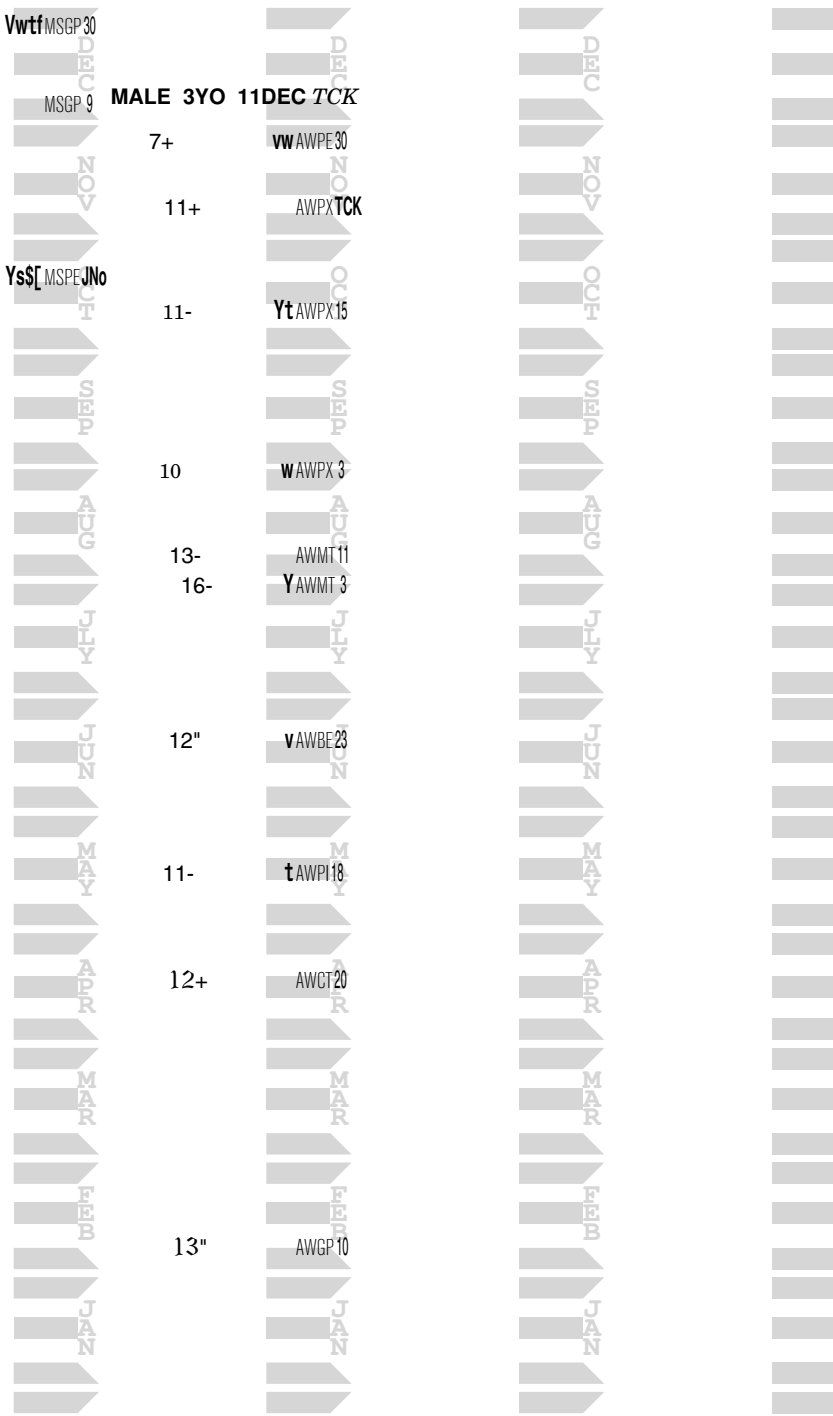
t AWP 18

12+

AWGT 20

13"

AWGP 10



XX p2

SUPER SAVER  
PERFECT STORY-TALE OF THE CAT KY

ALMOST PERFECT M 16

1 Race 2

3 RACES 18

8 RACES 19

♠21+ t75WQ24  
 ♠25- tAWWQSCA  
 9F ♠19" w&SA32WQMCe  
 SEP  
 AUG  
 JUL  
 JUN  
 MAY  
 APR  
 MAR  
 FEB  
 JAN

MALE 3YO 11DEC TCK

23-

v5PE29

^24+

Y10PETCK

17-

Yw10MT20

19+

Y16PX23

15

w16PE29

=22-

YB16MT3

=22+

v[AVMTJNo

=17

V&JN25GP1

DEC  
 NOV  
 OCT  
 SEP  
 AUG  
 JUL  
 JUN  
 MAY  
 APR  
 MAR  
 FEB  
 JAN

DEC  
 NOV  
 OCT  
 SEP  
 AUG  
 JUL  
 JUN  
 MAY  
 APR  
 MAR  
 FEB  
 JAN

DEC  
 NOV  
 OCT  
 SEP  
 AUG  
 JUL  
 JUN  
 MAY  
 APR  
 MAR  
 FEB  
 JAN

QUALITY ROAD  
LIGHTSHAFT-MINESHAFT KY

XX p3

ARTICULATOR M 15

1 Race 2

2 RACES 17

9 RACES 18

10 RACES 19

25+

F^18-

13

.11+

=13

'17+

.10-

r'14"

23

.12+

~^10-

Yt[AWGPJNo

v&jh50KE26

vTAWGD 3

TAWGD 5

VwfAWOP 7

AWOP18

YAWOP 3

vWAWOP 27

Vwstf30OP12

MALE 4YO 11DEC CAG

8+

r.16+

9"

14-

13

914-

9

913+

GELDED

.12-

13+

DEC

NOV

OCT

SEP

AUG

JUL

JUN

AWPX11

MY

APR

MAR

FEB

JAN

AWGP19

AWGP13

AWGP30

AWPI18

AWLR20

W35LR CAG

AWMT29

AWMT23

AWMT23

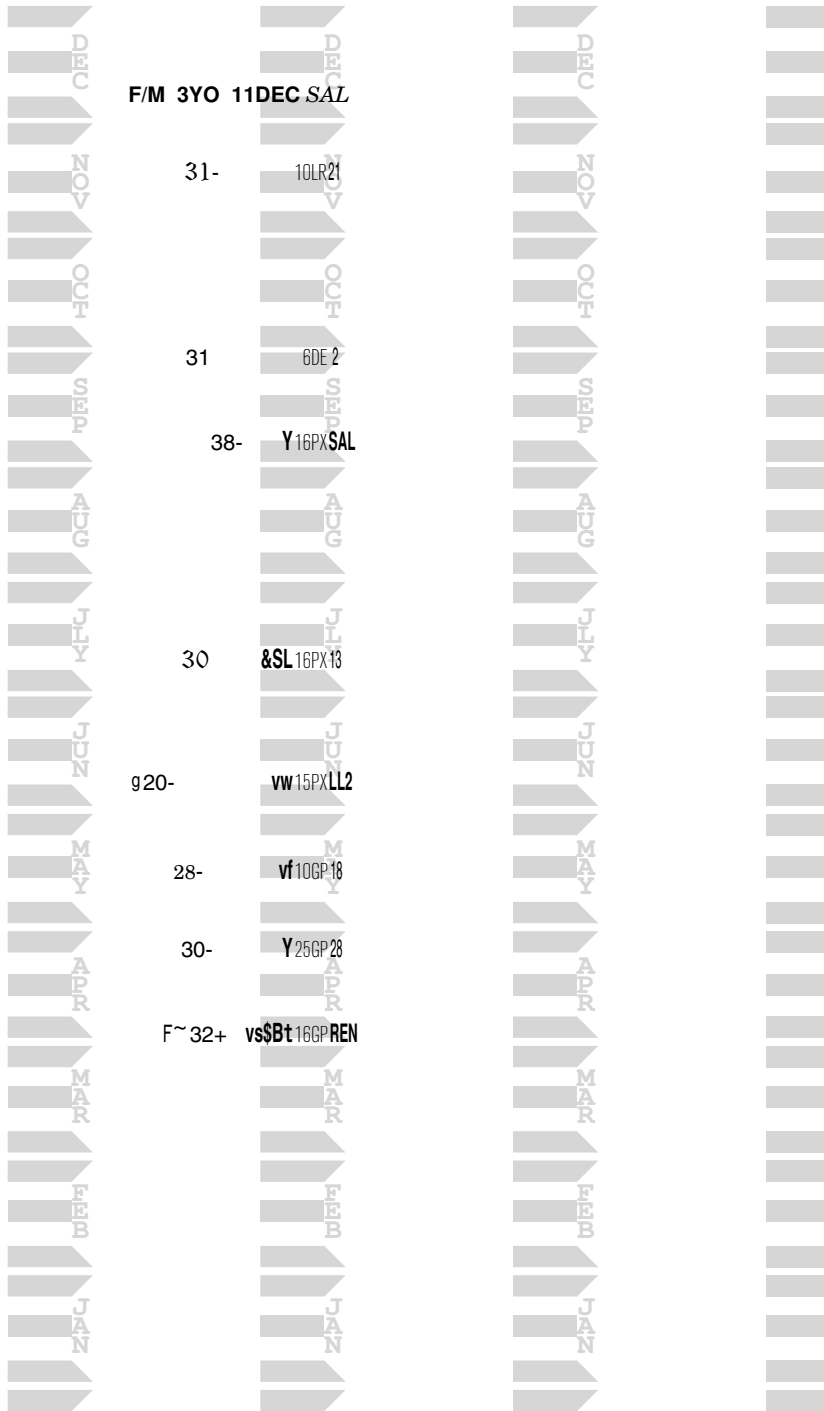
XX p4

BACKTALK  
CATWIT-DISCREET CAT FL

BACKCAT F 16

1 Race 2

8 RACES 19



XX p5

INTO MISCHIEF  
MYSTERY AT SEA-CAPOTE LA

BATTLE AT SEA M 15

1 Race 2

2 RACES 17

10 RACES 18

0 RACES 19

~ =21-



r.17-

=14

27

.15

15-

12

~^22-

11+

^15

19+



YQ AWFG 8

AWGw 3

v AWKE 10

wQ AWLD 2

v AWEL 12

AWPR 6

AWEL 26

Yw AWFG 24

Yw MSFG 10

V MSFG 20

MALE 4YO 11DEC MJM



F 22"

Ragozin -- The Sheets <sup>TM 4410^0</sup>

Hip 240

**XX p6**

HUNTERS BAY  
CAT BIRD-DANCE WITH RAVENS MD

**BAY OF CATS F 15**

**1 Race 2**

3 RACES 17

4 RACES 18

0 RACES 19

18"

25LR26

22-

VWAWDE19

F 32"

YGAWLRMEE

9-

VwAWLR20

14"

VW35LR31

19

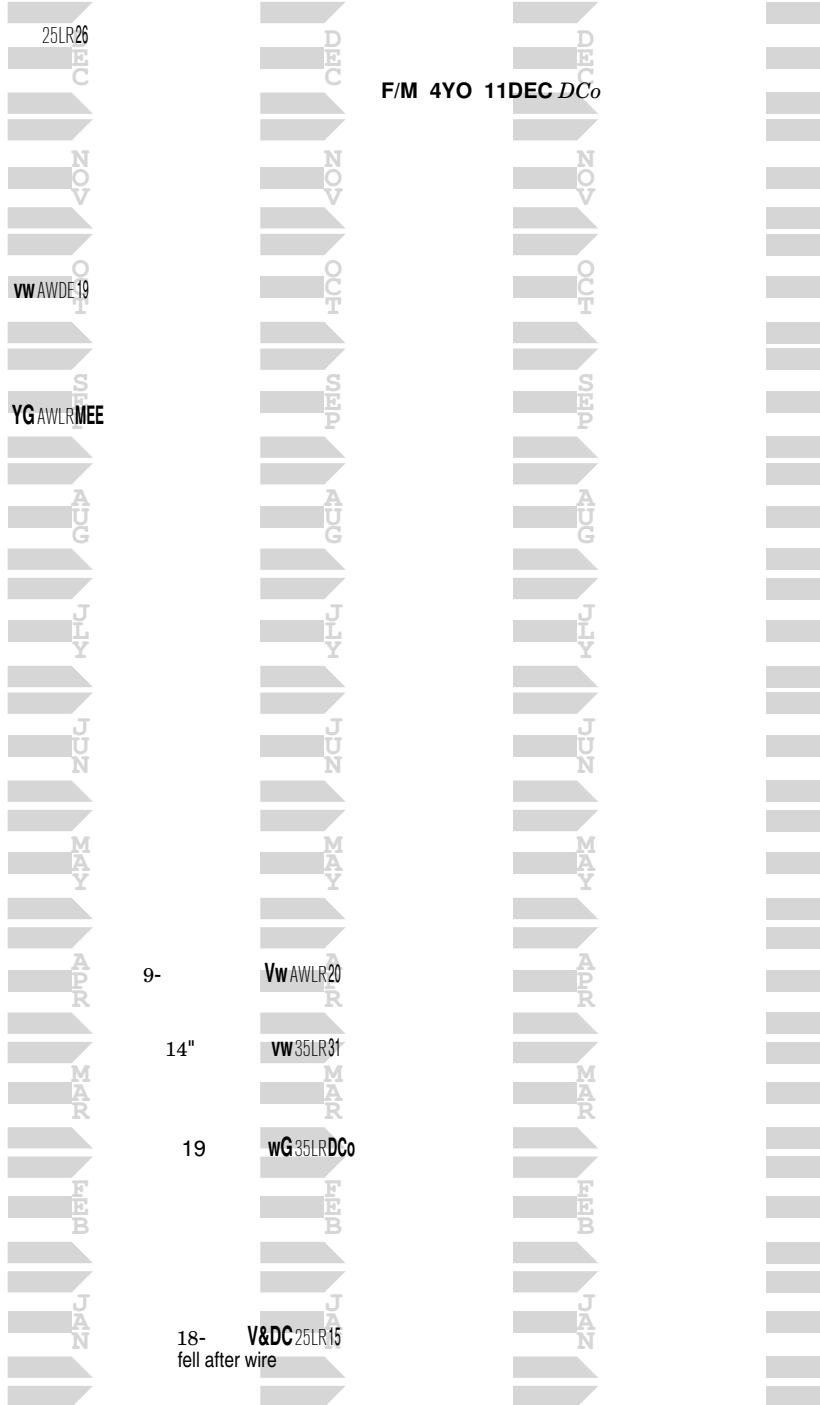
wG35LRDCo

18-

fell after wire

V&DC25LR15

F/M 4YO 11DEC DCo



Ragozin -- The Sheets <sup>TM 4410^0</sup>

XX p7	HEY CHUB BEATSANEMPTYSTALL-BROKEN VOW	BEATUBYACHUBINOSE F 14	1 Race 2
5 RACES 16	10 RACES 17	8 RACES 18	11 RACES 19
^31			
v40PX20			
49"		'19"	F/M 5YO 11DEC SAZ
v10PX28		29	19
34-		v5LR18	w4PE20
20PX 8		.26+	22"
	24-	v7PX SAL	v[4PE 6
	^xx		20-
	w20PX23		
	JT15PE14		22+
		F19	6DE23
		&SL5DE17	
28	19"	26	
YMSMT28	tMSMT27	vt5DE 5	31"
		23+	Y12MT25
		vs12DE22	
33"	20-		30+
sMSMTSMe	vMSMT 6		YAWMT 2
	24"	24-	
	25+	Vw7DE12	
	g~ 22+		19
	dwelt		VAWMT 15
	20"		g16
	YDG40MT 3		VAWMT 19
	v40MTBGD		
		..33"	
		Gt25PX 7	G19
			vW5LR31
			27-
			v5LR10
	^33"		
	33"		21"
	v10LR22		Y5LR11
	v[40PX14		

XX p8

BELLAMY ROAD  
CURE FOR SALE-AR-NOT FOR SALE-AR NY

BELLARMINE HALL M 17

1 Race 2

3 RACES 19

MALE 2YO 11DEC CFM

P~.=21-

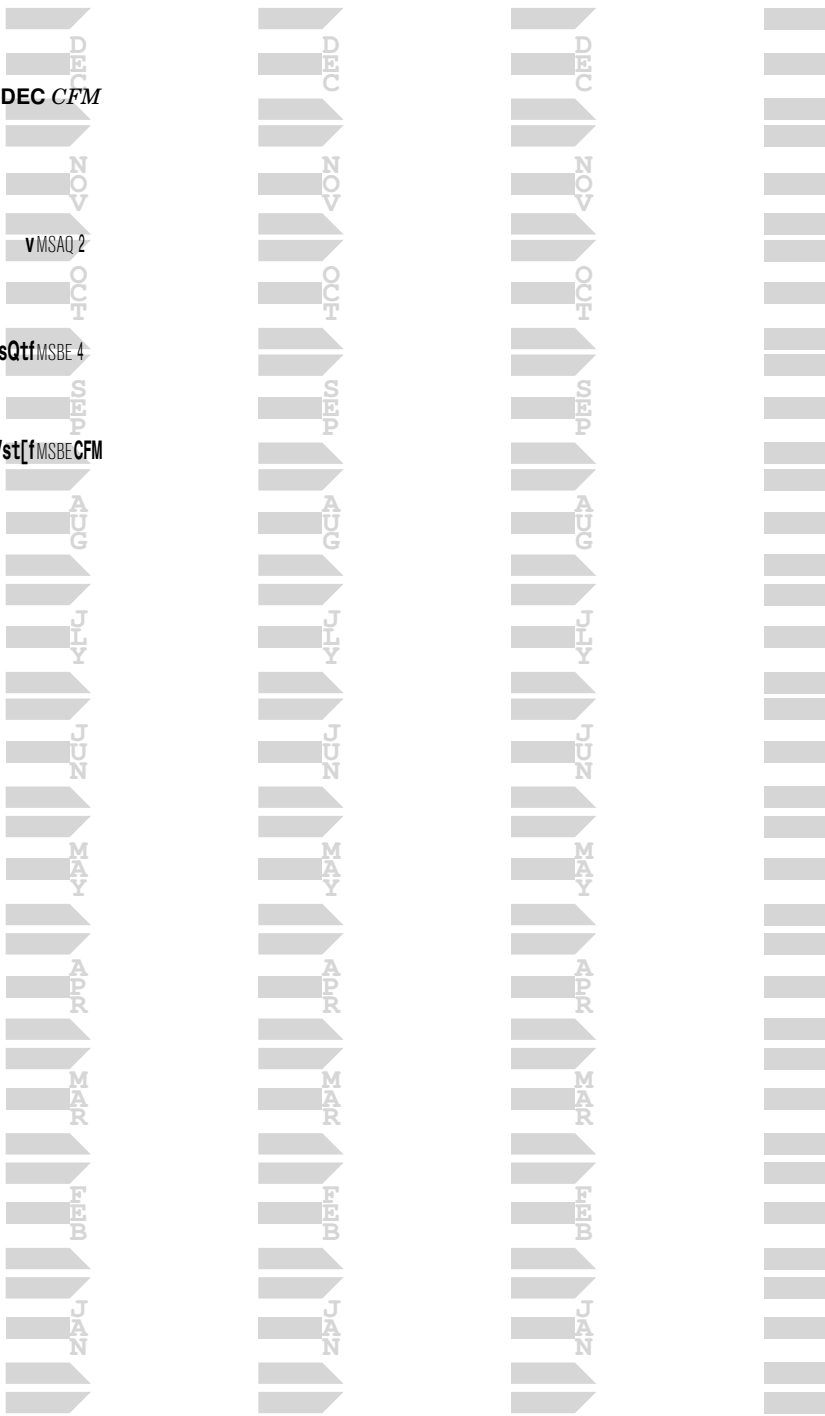
VMSAQ 2

g.27

sQt[MSBE 4

F=@1-

Vst[fMSBE CFM





XX p9

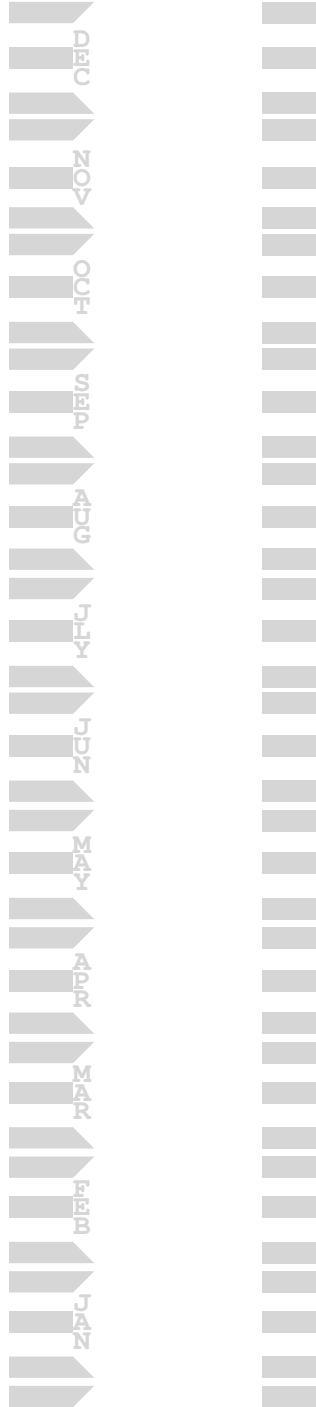
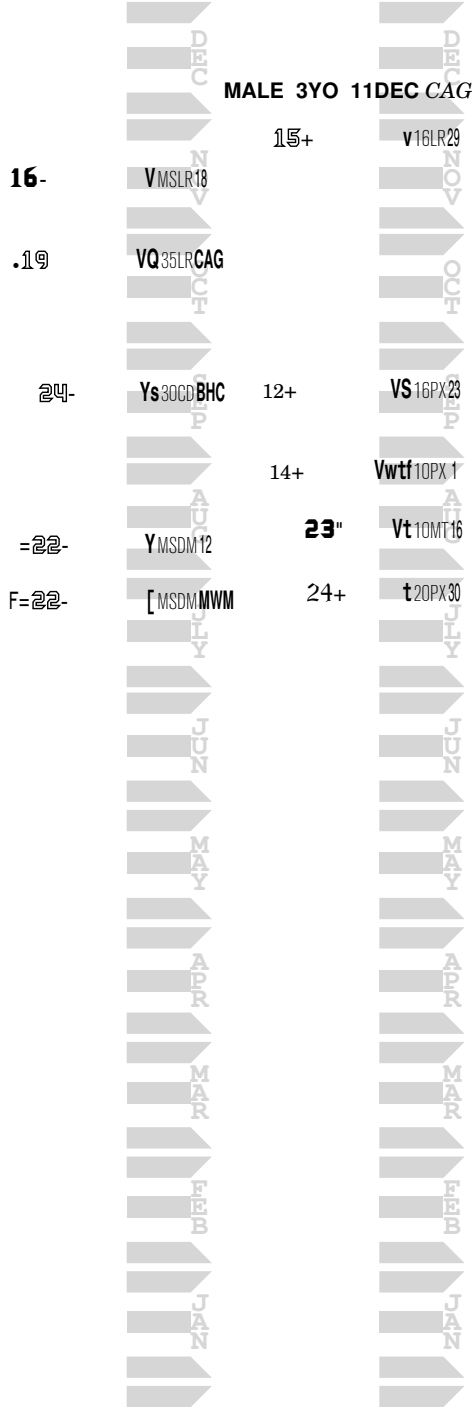
FED BIZ  
AN ANNKA MOMENT-MECKE KY

BIZ NASTY M 16

1 Race 2

5 RACES 18

5 RACES 19





XX p11		MUTAKDDIM BROMITA-AR-LUHU ARG		BLUE Y GOLD-AR		M 10		1 Race 2	
7 RACES 16		7 RACES 17		8 RACES 18		11 RACES 19		MALE 9YO 11DEC TCK	
					12	v25PE26			
					14-	v25LRKLI		12	v25LR29
								11-	Vw16PE13
					11+	v35LR21		16-	v25LR14
.9-	wvQAWPX 2	17"	YAWPX 2						
=7"	v2wPX17	14"	v50MT 9	.17+	V40PX11		^8+	v25PE14	
		7"	50MT13				^11-	f25PE24	
14+	vawMT14	^9-	50MT23	14-	YAWDE14				
r.11-	YwAWMT31	=17-	AWMT23	9-	wQAWPX23		12	VGB25PE28	
12-	AWMT26	.11+	VSQAWMT29	5"	vW30MT 9		10-	25PE14	
7+	YAWMT 4	rg.10+	YQAWMT13	.7"	vt20MT12		17"	YAWPETCK	
G11+	YAWMTJWT								
							14-	vW&TK25PE30	
							^11+	Vw25PE 7	
							s12	vW25PE17	

top: spr dst turf  
 5yo> 3+  
 4yo> 9" 17+ 17+(F)

top: spr dst turf  
 3yo>  
 2yo> unraced

	XX p12 2 RACES 17	EL PADRINO TACTICAL WARNING-TACTICAL CAT PA 6 RACES 18	BOLT BROTHERHOOD M 15 12 RACES 19	1 Race 2
19+	YwB MSPE 2	g 17-	<b>MALE 4YO 11DEC BLK</b> r 16 vw&th 8PE BLK	
20-	Y MSPE Thn			
		17+	19- Yt&bk 10PE 19	
		18+		
		21	^ 16 Y 16PE 13	
			^ 14- vt 16PE 21	
			15 Yt AWPE 19	
			17" v AWPE 6	
			1@" Vw AWPE 11	
			14- V AWPE 24	
			g 20- Y AWPE 3	
			s 16 Ytf AWPE 8	
		F.22	^ 17- Vsf AWPE 16	
		30"	14- AWPE 16	



XX p14

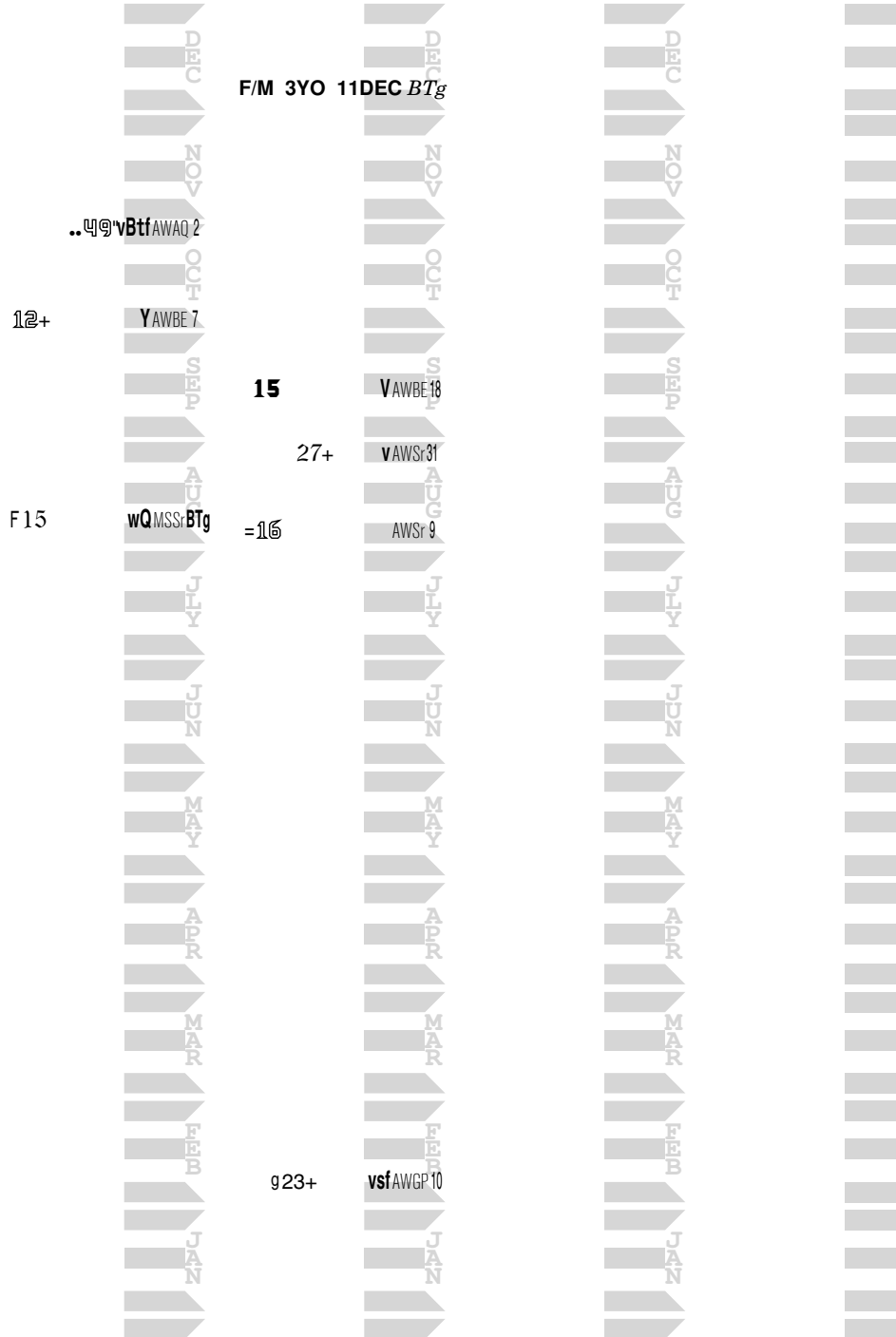
EL PADRINO  
HAPPY REFRAIN-NOT FOR LOVE MD

BRUCIA LA TERRA F 16

1 Race 2

3 RACES 18

4 RACES 19



Ragozin -- The Sheets <sup>TM 4410^0</sup>

Hip 250

XX p15

IMAGINING  
SANDVIKA-FR-ELNADIM MD

BUBBA SEVENTY SIX M 17

1 Race 2

6 RACES 19

MALE 2YO 11DEC JSn  
40- 10LR 6

36+

v10LR11

31-

16LR 5

34"

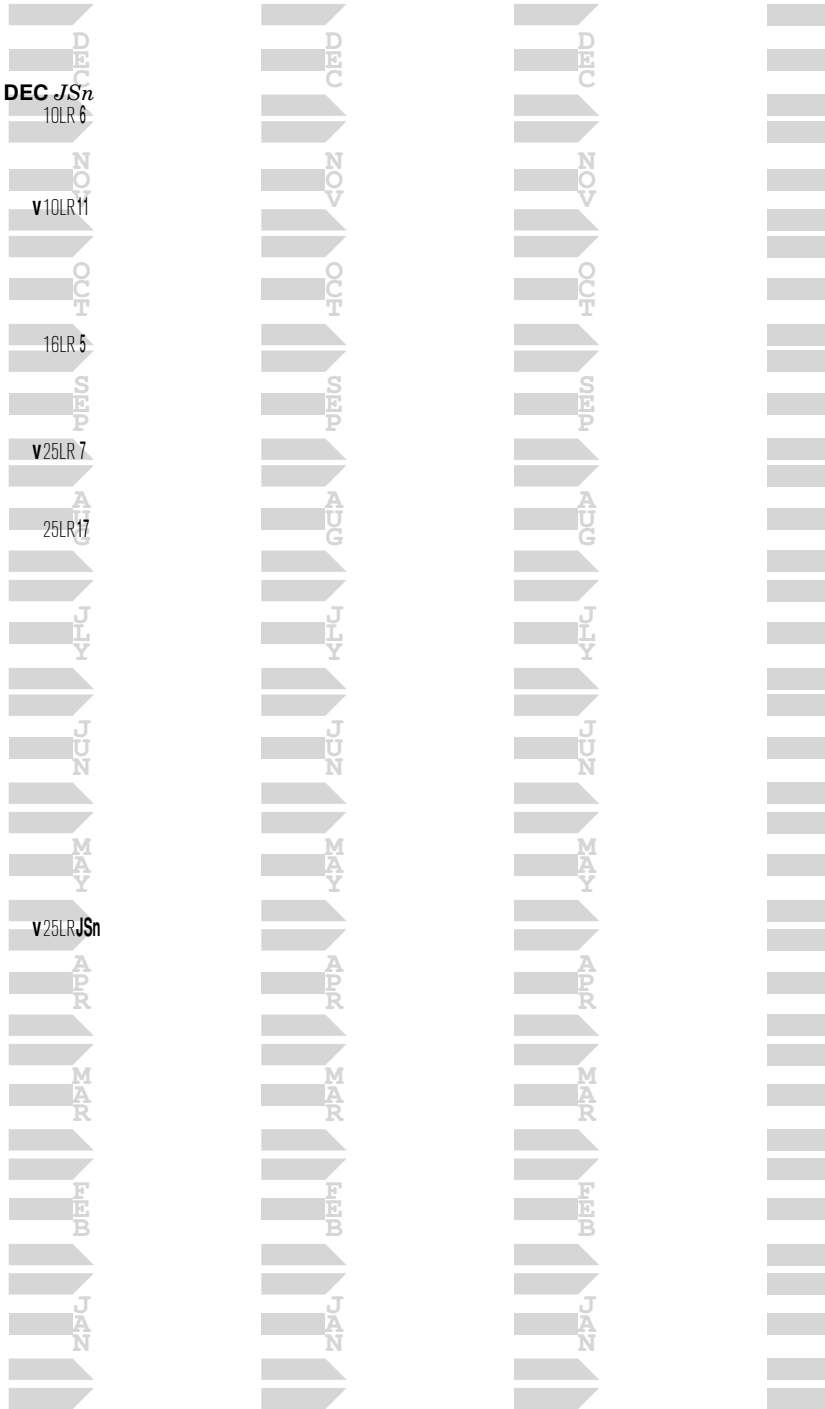
v25LR 7

32+

25LR17

F 47-

v25LR JSn



XX p16

MIDNIGHT LUTE  
MOON OVER MALIBU-MALIBU MOON KY

CALIFORNIA NIGHT M 15

1 Race 2

1 RACE 17

7 RACES 18

9 RACES 19

gF..17+

DEC  
NOV  
OCT  
SEP  
AUG  
JULY  
JUN  
MAY  
APR  
MAR  
FEB  
JAN

g9.14"  
g11-  
G15"  
r.16+  
19  
G..16+  
.19"

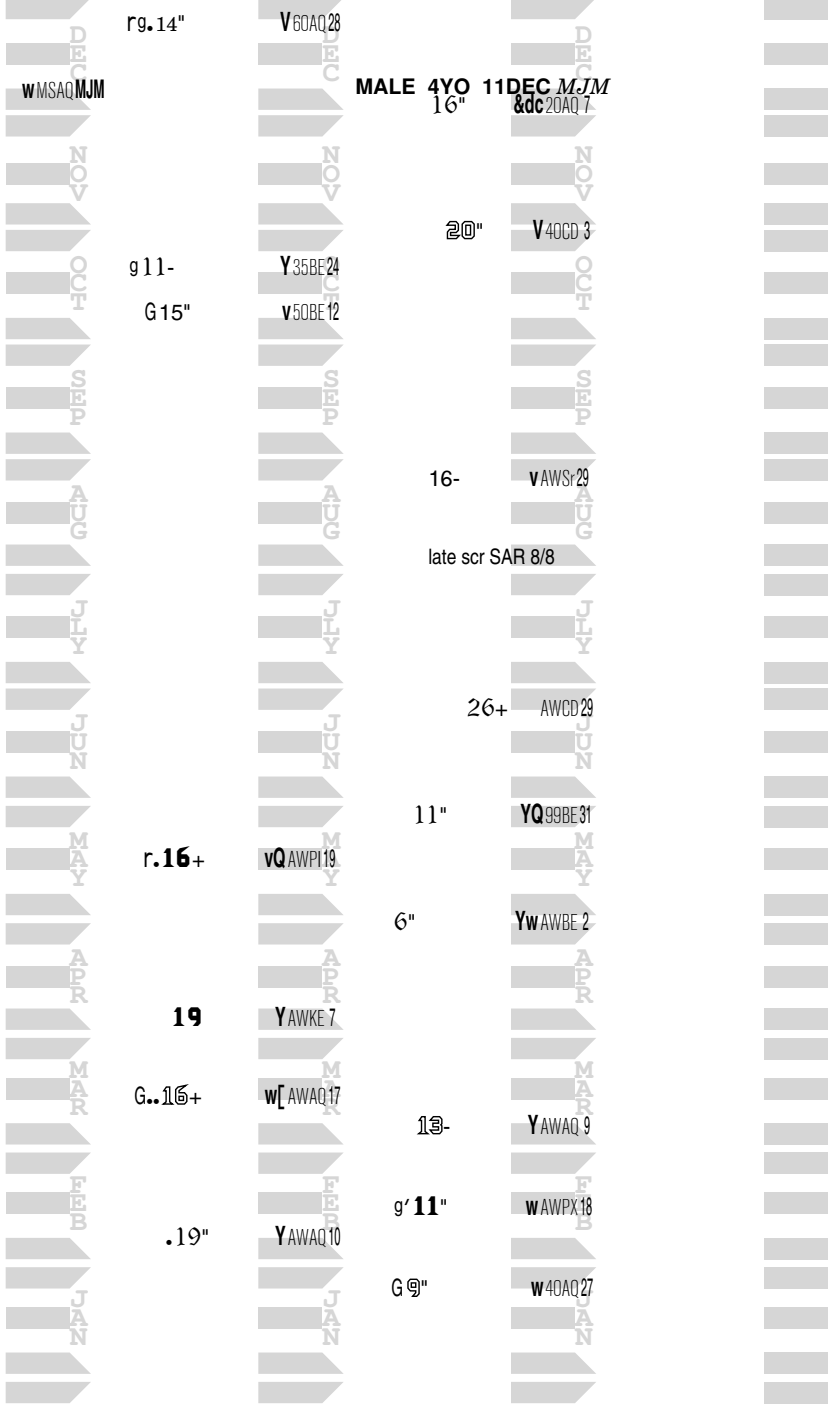
V60AQ28  
Y35BE24  
v50BE12  
vQAWPI19  
YAWKE 7  
w[AWAQ17  
YAWAQ10

MALE 4YO 11DEC M/JM  
16" &c20AQ 7

20"  
16-  
late scr SAR 8/8  
26+  
11"  
6"  
13-  
g'11"  
G9"

DEC  
NOV  
OCT  
SEP  
AUG  
JULY  
JUN  
MAY  
APR  
MAR  
FEB  
JAN

V40CD 3  
vAWSr29  
AWCD29  
YQ99BE31  
YwAWBE 2  
YAWAQ 9  
wAWPX18  
w40AQ27

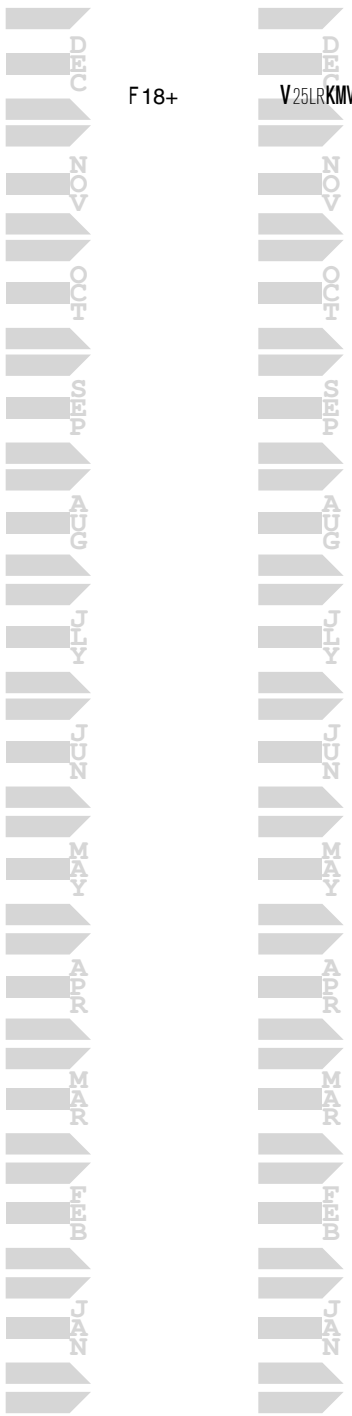




XX p17

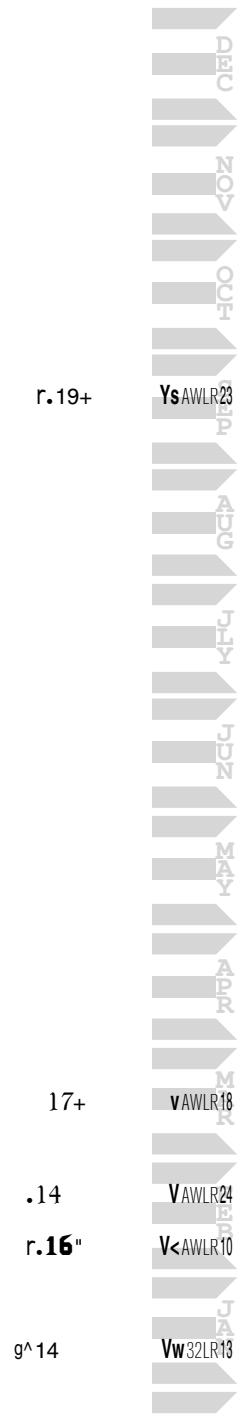
HENNY HUGHES  
SWEET ELIXIR-APTITUDE MD

1 RACE 17



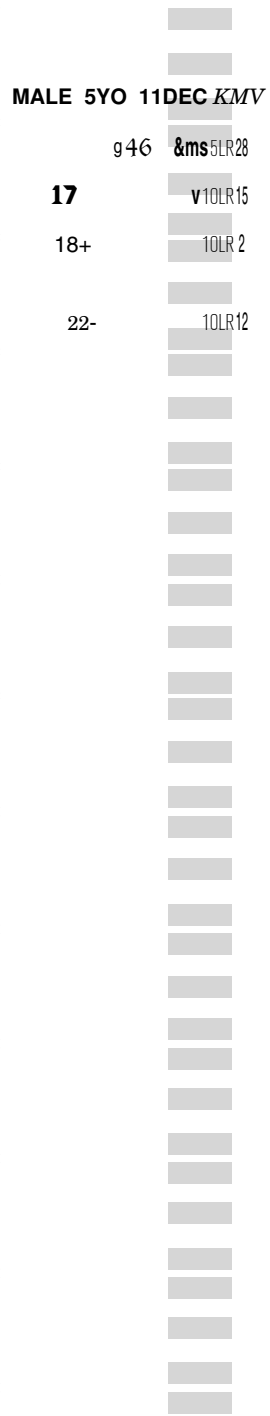
CAMPARI M 14

5 RACES 18



1 Race 2

4 RACES 19



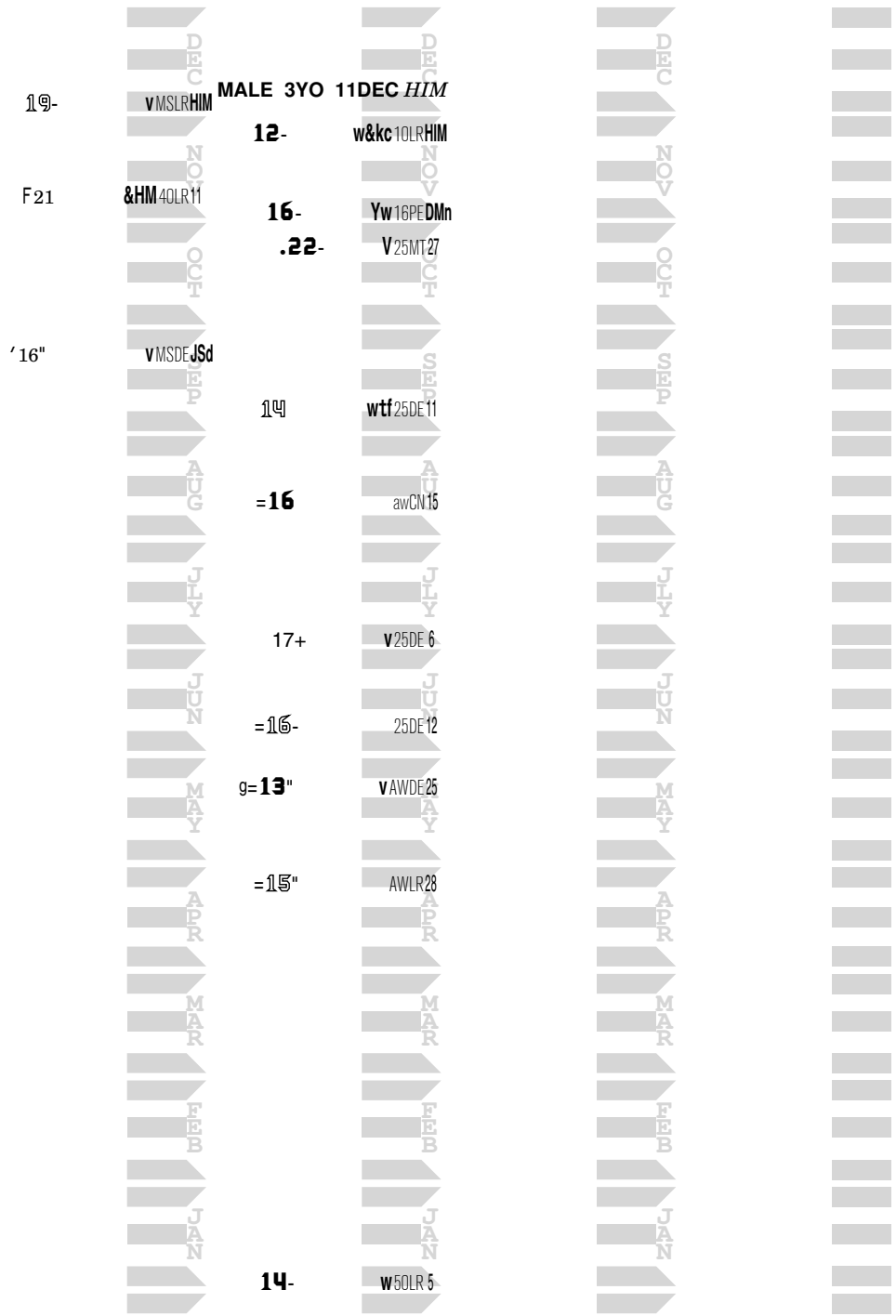
XX p18 TREASURE BEACH-GB CELTIC TREASURE M 16

IRISH ORCHID-WITH DISTINCTION FL

1 Race 2

3 RACES 18

10 RACES 19



# Ragozin -- The Sheets <sup>TM 4410^0</sup>

Hip 256

**XX p19**

ENGLISH CHANNEL  
WILDALOT-WILD AGAIN NJ

**CHANNEL SURFING F 12**

**1 Race 2**

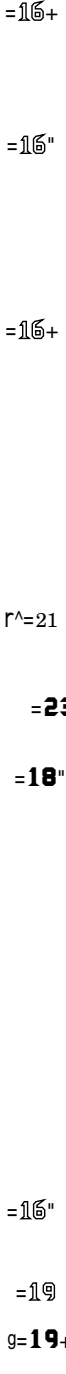
9 RACES 16

10 RACES 17

9 RACES 18

6 RACES 19

P~^=1@+



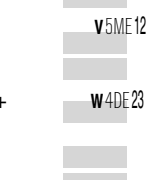
F/M 7YO 11DEC JJM

g35 Y4PEJIM

=1@-



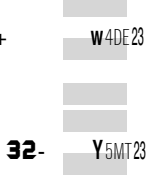
=1@"



=21-



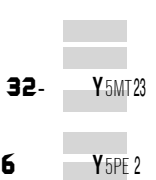
=1@"



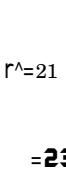
24



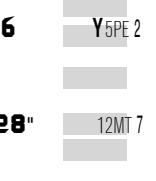
21+



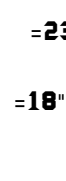
=21



=1@"



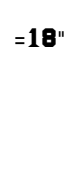
28+



28"



30"



31+



34"



top: spr dst turf  
3yo> 26" 19"  
2yo> 31+ 26" (F)

XX p20		NEKO BAY REBINA LAKE-SALT LAKE KY	CHARMING DEPUTY M 13		1 Race 2	
10 RACES 16		12 RACES 17	13 RACES 18	14 RACES 19		
		^16+	v40FG23			
/15-	vAWHA 8			19+	&TK25PEJG	MALE 6YO 11DEC TCK
12+	AWHA17	25	YAWFG23			
				.13"	wQt25IN 2	^18 Vwt5PE 9
21	Y25IN 4			=13	Y17IN 9	11+ V16PE11
21+	AWIN21			g11-	V25IN21	11+ Vw10PE26
						20- 16PE 4
20+	Q25IN 18			.17-	VQ25IN GGa	18- 25PE 10
=22	VAWIN30	15-	25IN 5	13-	Y&gg25IN 4	12- Vwf16PE26
		.15-	Y25IN21	14-	vQAWIN20	20PX 15
		16	VAWIN27			r.10 V16PE29
				12	YtAWIN15	
		15	v25IN31			
		.12+	vwAWIN19	.13-	40IN19	16+ V25PE18
		14"	Yw25IN25			19 v25PE25
20	v40OP25	17+	V25OP25	14"	w25IN17	12 V25PE28
19+	Yt[AWOP 5	14"	V30OP 3	^12"	Vw20OP 2	12 v25PE27
26-	vAWOP13	17+	YtawOP16	16+	30FG16	G^14- Vtf25PE 8
19"	YAWOPJHn	20-	Y25OP26	^15-	vf30FG28	11+ vs25PETCK

top: spr dst turf  
2yo> 17 17+ (F)

XX p21

FRIESAN FIRE  
CHEROKEE SILVER-SILVER BUCK MD

CHEROKEE FIRE F 15

1 Race 2

18 RACES 18		11 RACES 19	
.22-	V12LR21		
		F/M 4YO 11DEC AA3	
20"	Y12LR30	28"	f5CTAA3
17-	v12LR11		
G25-	Q16LR3		
^19	vQ16LR14		
18-	vwQ16LR28	21	V5LR27
23	5LR16	32-	5LR20
21-	5T131		
37"	V10LR19	22-	wf5CT16
20"	Vt5LR5	35+	v5LR1
32+	V16LR26		
		38	Y5LR22
		948-	V8LR9
P~=36+	vAWLR6		
30	AWLR14		
20	vw16LR23		
27+	Y25LR11		
.20+	16LR25	29+	5LR23
s.41+	v25LRDES	35	v5LR7
F30-	&ds10LRMMc	.33+	v5LR19
		23"	v12LR5

Ragozin -- The Sheets <sup>TM 4410^0</sup>

Hip 259

XX p22

RIMROD  
COZZY RHYTHM-COZZENE PA

CHEVERIE F 12

1 Race 2

7 RACES 16

10 RACES 17

12 RACES 18

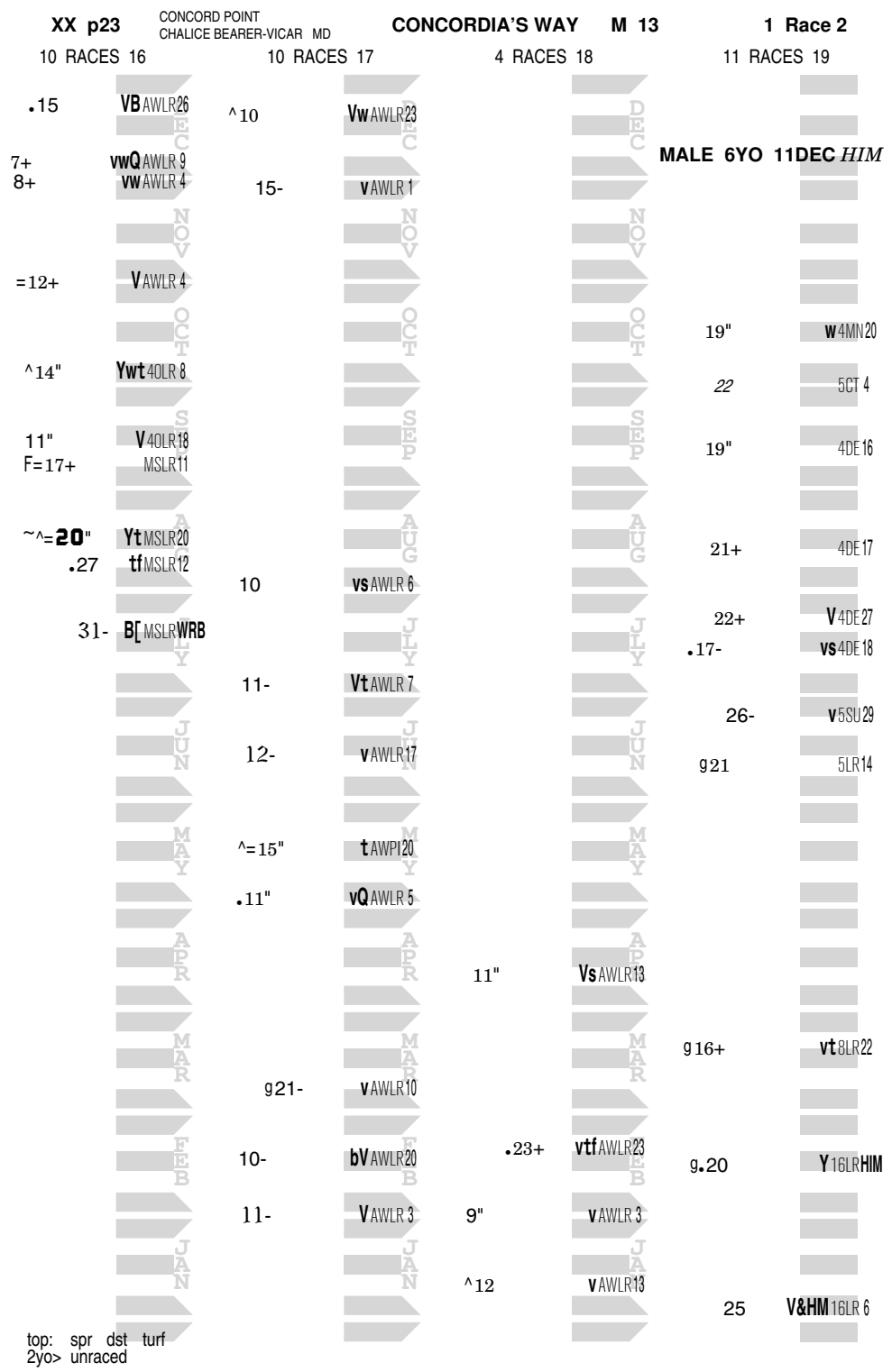
9 RACES 19

Month	7 RACES 16	10 RACES 17	12 RACES 18	9 RACES 19
DEC			r.21"	F/M 7YO 11DEC JZs
NOV				
OCT	=18" v16LR 5	26+ ~29+ 32 29+	21+ Yw4PE14	
SEP	^=20 YAWLR 7		21- 5PE CDn	
AUG			23+ vf6PE13	
JUL	=16" 25DE 8		22 vws4DE 4	
JUN			22 v5DE22	
MAY	=15- v16LR 5	24 .20+	.27" 6DE CM2	.24" n4PE23
APR		=18 Y15PE JZs		
MAR	=19" Y20DE22	^26+ 5PE 7		=21" 8PE JZs
FEB	^=21- AWPX 4	=20" 16LR16		27" Y5PE14
JAN	P~=18 Yw25LRWKn	=23" Yt20PE CDn	r.31 Q15PE12	25- Y10PE31
				18 w5CT11
			25 10PE17	20" 6PE14
			24 Y15PE14	^23" v8PE 8
			23 Y5PE 1	
			26+ Yw5PE 3	G^19- 8PE CBe 21- Yw&cb 5PE 2

top: spr dst turf  
3yo> 20" 16" (F)  
2yo> 24"

Ragozin -- The Sheets <sup>TM 4410^0</sup>

Hip 260



top: spr dst turf  
2yo> unraced

**XX p24**

ADIOS CHARLIE  
UNLIMITED PLEASURE-VALID APPEAL FL

**CONQUEST SEE YA M 13**

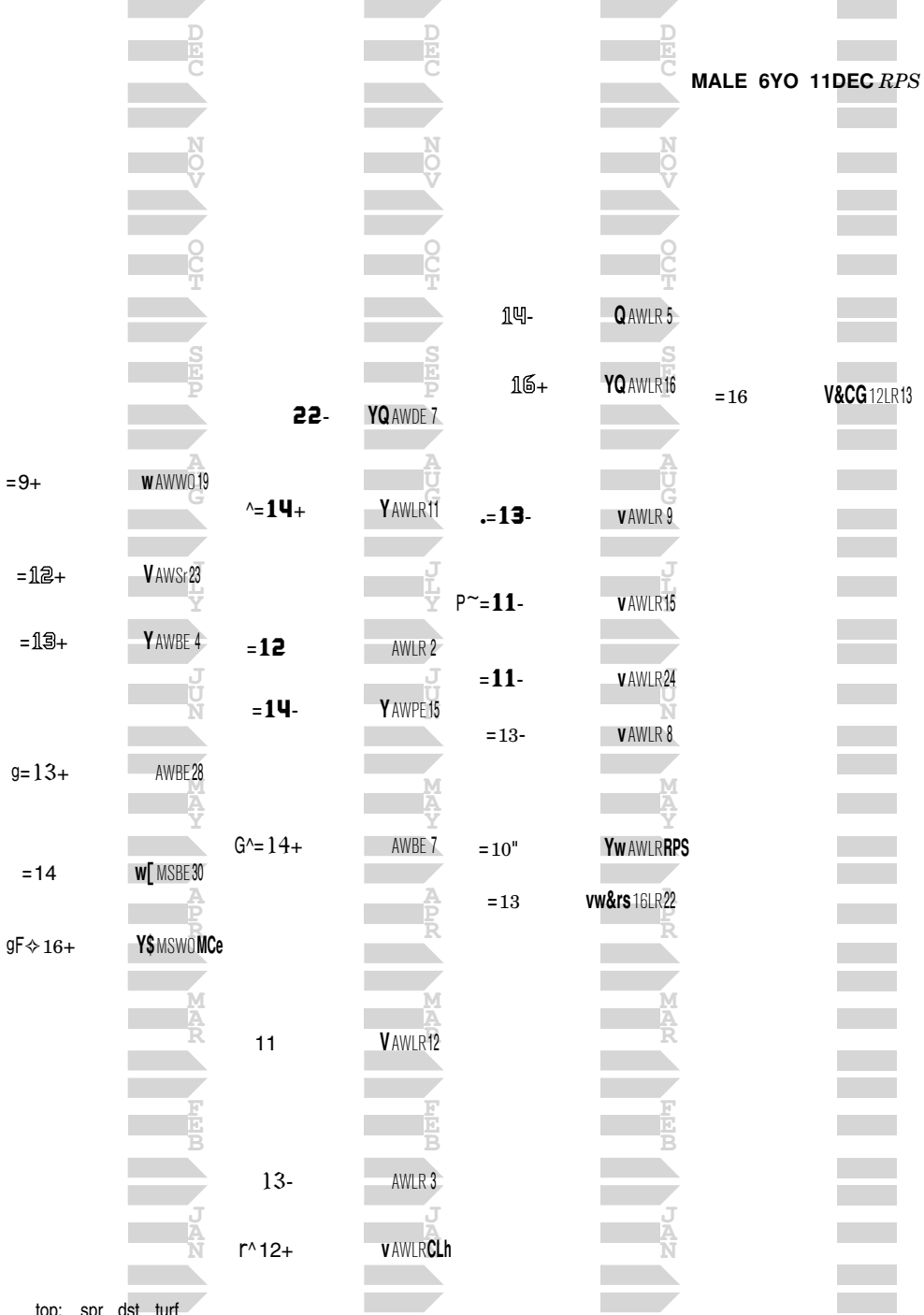
**1 Race 2**

6 RACES 16

8 RACES 17

8 RACES 18

1 RACE 19



top: spr dst turf  
2yo> unraced



XX p25

RUN AWAY AND HIDE  
CHEROKEE SHEIK-CHEROKEE RUN KY

COOL ALLEY F 15

1 Race 2

6 RACES 19

F/M 4YO 11DEC CAG



=23-

v16P124

.19+

16LR 3

^28+

AWLR12

16-

w10LR17

33+

v25LR CAG

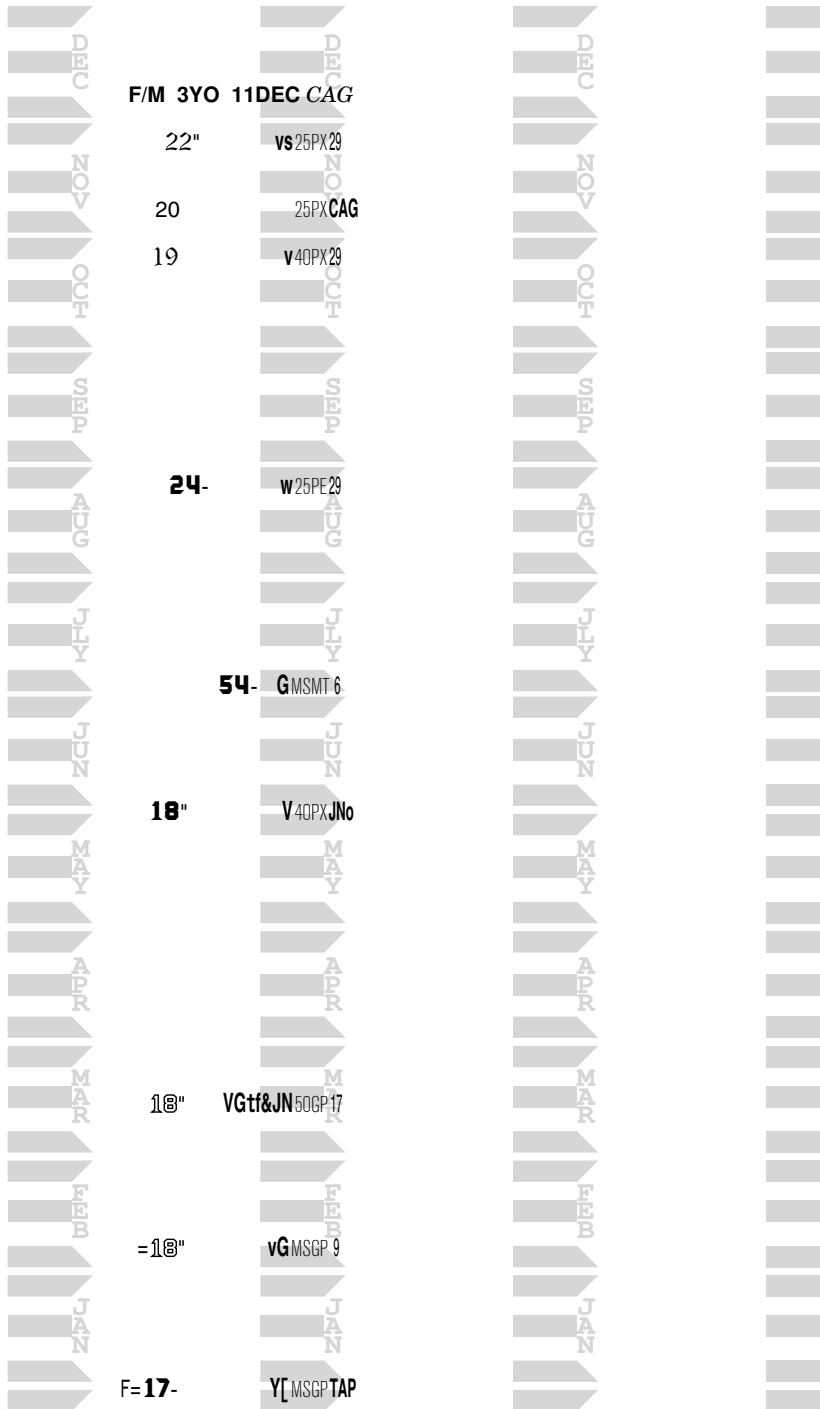
F26 Ys\$[&CG 25LRM Va

XX p26

VERRAZANO  
RHYTHM AND RHYME-UNBRIDLED'S SONG KY  
9 RACES 19

DANCE AND DANCE F 16

1 Race 2



XX p27		COOL COAL MAN ONE MORE MOONDANCE-TAKE ME OUT FL		DANCING COOL F 13		1 Race 2	
8 RACES 16		11 RACES 17		19 RACES 18		13 RACES 19	
		^22-	vw5LR23	r.21	V8PXKAD		
		^18	Vw5PX11			F/M 6YO 11DEC.SAZ	
1@"	v6Gw20			.15+	V&kd5PX 2		
16+	VwBf6Gw11			17+	V8PX19	23	vw5PE16
				G^15	Vw5PX10		
				..28-	V10PXJTr		
17+	Vw6Gw 9			31+	&jt5PX 1		
				29"	Y10PX27		
		20	v5DE14	25	f12PERDa	.24-	V5DE14
						21-	vw4DE29
		26+	v5PX22	24"	Y&rd10PX17	21-	V4DE13
3@"	v6GP 9						
=1@+	v10GP 2			..18	V16PX CJM	17+	Vws4DE22
=1@+	v10GP19	926+	Y7PXAVz	16	v&cm8PX12		
				26+	vAWPX 5	.31"	5PX28
						25	Vt5PX21
r.23-	Vsf12GP18	17"	Ysf6GP14			21+	5PX 7
				12	YwsawPX 6	922"	V5PX16
25+	V12GP AAM	27	Ysf6GP16	20	w10PX24		
		22-	Y6GP 2	..11-	VwB7PX14	28"	v10PX SAL
				16-	Vtf10PX 2		
				^23	V10PXJTr	.23"	V&SL7PX 2
		24	sf6GP11	^25"	vt&jt7PX13	/23"	vf10PXJTr
		16	6GP25			..25-	v&jt5PX19
		20+	Vsf6GP16	25	vw5PX15		

top: spr dst turf  
2yo> 25" (F)

XX p28

OXBOW  
OUR DEB ON AIR-SMART STRIKE KY

DEBRAW F 17

1 Race 2

2 RACES 19

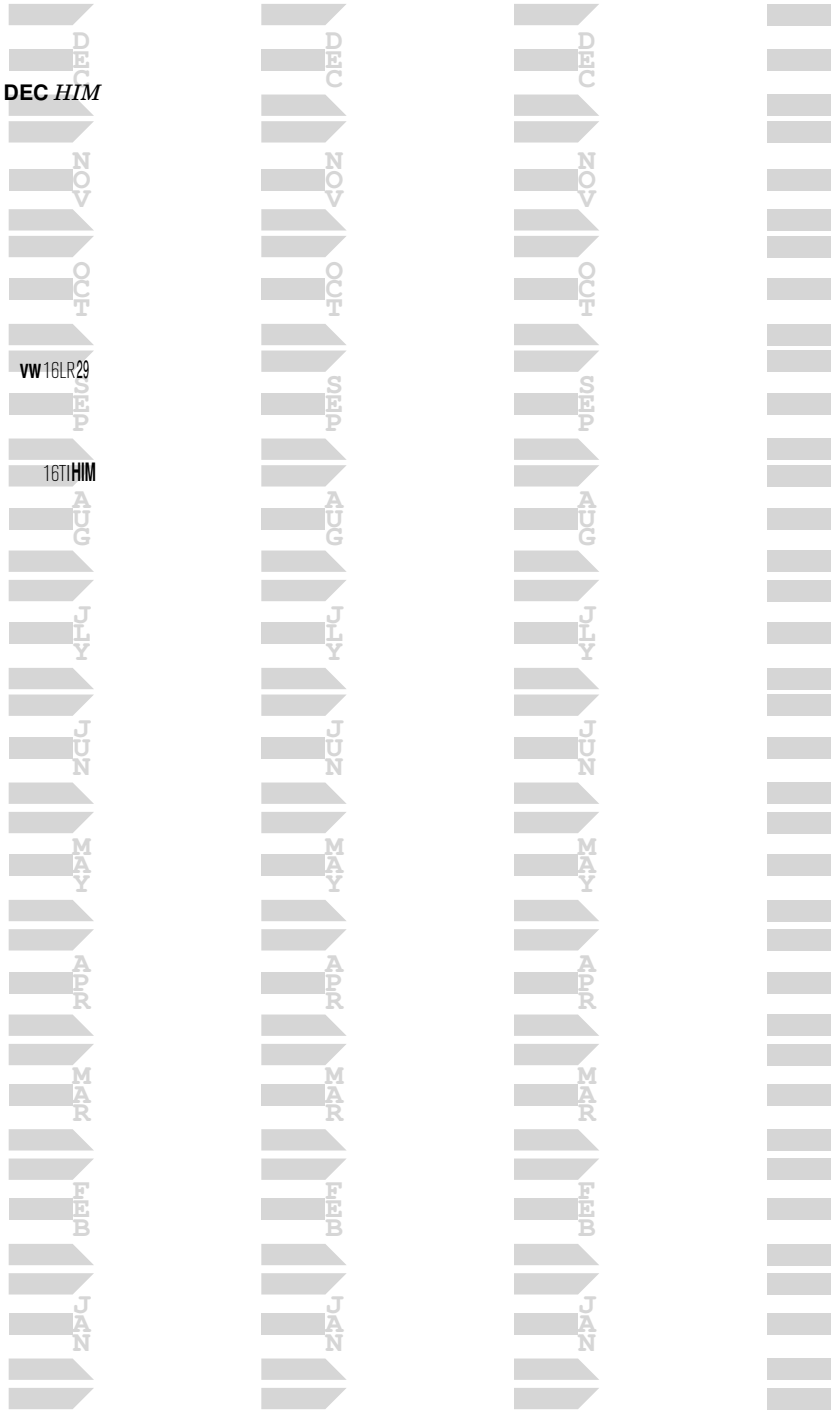
F/M 2YO 11DEC HIM

22+

VW 16LR29

F 29+

16T HIM



XX p29

SHACKLEFORD  
STYLISH AFFAIR-NOT FOR LOVE VA

DETERMINED LOVE

F 17

1 Race 2

7 RACES 19

F/M 2YO 11 DEC PSI

32" v12LR10

=19+ Y62LR14

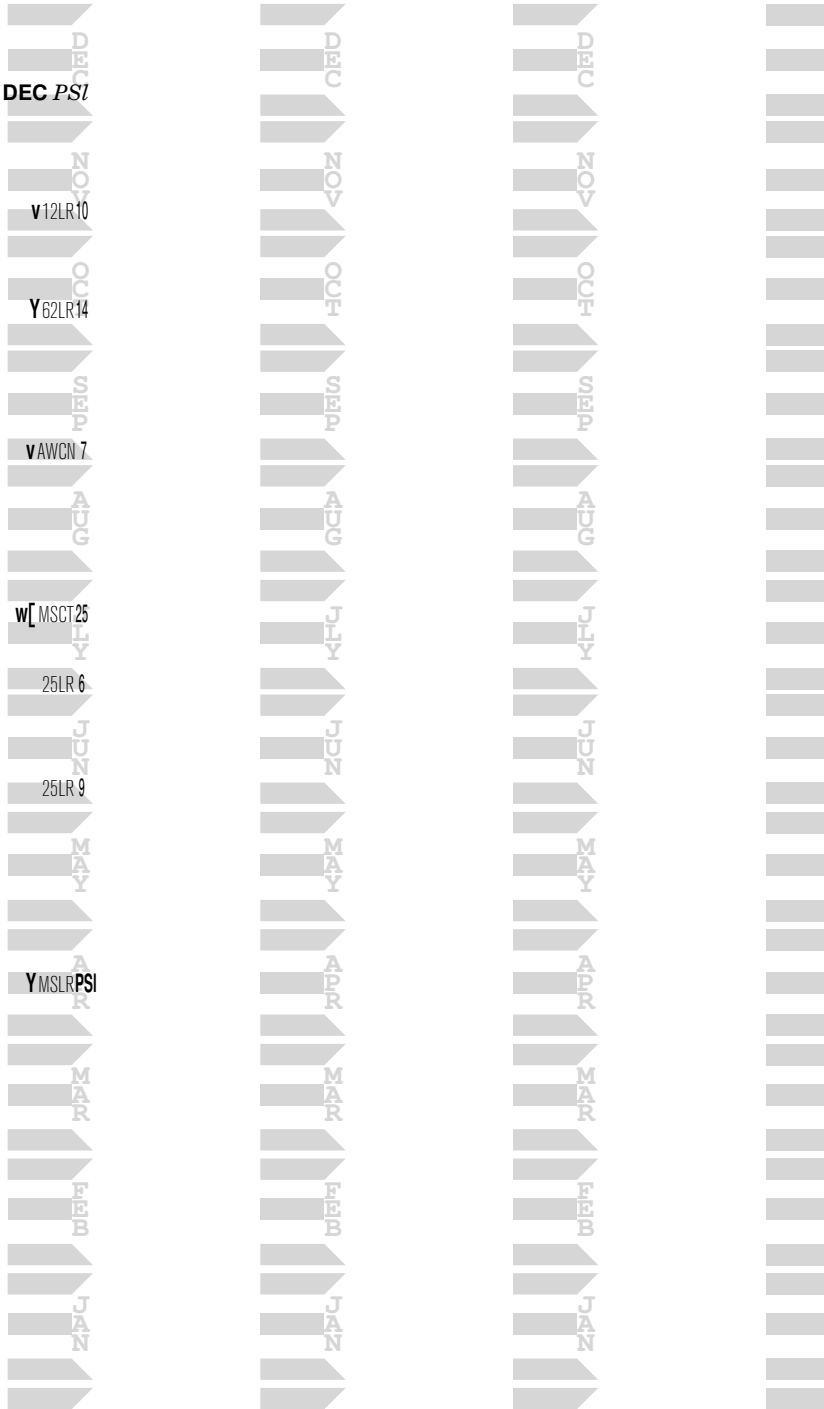
=22" vAWGN 7

25+ w[MSCT25

33 25LR 6

934+ 25LR 9

30+ YMSLRPSI





XX p31

PIONEER OF THE NILE  
BEAUTIFUL JULIE-TIZNOW KY

EGYPTIAN PIONEER M 15

1 Race 2

5 RACES 18	9 RACES 19
g 27+	v 25PX MVP
<b>MALE 4YO 11DEC KAD</b>	
.18"	25PX JLL
gelded	25-
	Y 8PE 6
	15
	w 5PE 20
	^ 24-
	Ywt 5PE 21
	20+
	Y 5PE 12
	24
	Y 5PE 15
	29-
	5PE 18
	24
	w 5PE 20
	27"
	Y 7PX KAD
G..20	v awAQ CFM
:19	w&cm 40AQ 17
F 15"	..32 v&kd 12PX 28
	V[MSAQ RRR

XX p32

SCAT DADDY  
COUNTINGONCAROLYNN-DIXIE UNION MD

FACTS DON'T MATTER

F 16

1 Race 2

2 RACES 18

5 RACES 19

P~30+

DEC  
NOV  
OCT  
SEP  
AUG  
JUL  
JUN  
MAY  
APR  
MAR  
FEB  
JAN

YMSLR 9

F/M 3YO 11DEC A/G

DEC  
NOV  
OCT  
SEP  
AUG  
JUL  
JUN  
MAY  
APR  
MAR  
FEB  
JAN

F 26"

NOV  
OCT  
SEP  
AUG  
JUL  
JUN  
MAY  
APR  
MAR  
FEB  
JAN

vQ\$AWLRHGM

^=18+

NOV  
OCT  
SEP  
AUG  
JUL  
JUN  
MAY  
APR  
MAR  
FEB  
JAN

AWGD 10

=18"

w 25 IN 5

^=16"

vw 32 IN 20

=18"

v MSIN 13

=16

v MSIN A/G

DEC  
NOV  
OCT  
SEP  
AUG  
JUL  
JUN  
MAY  
APR  
MAR  
FEB  
JAN

NOV  
OCT  
SEP  
AUG  
JUL  
JUN  
MAY  
APR  
MAR  
FEB  
JAN

OCT  
SEP  
AUG  
JUL  
JUN  
MAY  
APR  
MAR  
FEB  
JAN

SEP  
AUG  
JUL  
JUN  
MAY  
APR  
MAR  
FEB  
JAN

AUG  
JUL  
JUN  
MAY  
APR  
MAR  
FEB  
JAN

JUL  
JUN  
MAY  
APR  
MAR  
FEB  
JAN

JUN  
MAY  
APR  
MAR  
FEB  
JAN

MAY  
APR  
MAR  
FEB  
JAN

APR  
MAR  
FEB  
JAN

MAR  
FEB  
JAN

FEB  
JAN

JAN

DEC  
NOV  
OCT  
SEP  
AUG  
JUL  
JUN  
MAY  
APR  
MAR  
FEB  
JAN

NOV  
OCT  
SEP  
AUG  
JUL  
JUN  
MAY  
APR  
MAR  
FEB  
JAN

OCT  
SEP  
AUG  
JUL  
JUN  
MAY  
APR  
MAR  
FEB  
JAN

SEP  
AUG  
JUL  
JUN  
MAY  
APR  
MAR  
FEB  
JAN

AUG  
JUL  
JUN  
MAY  
APR  
MAR  
FEB  
JAN

JUL  
JUN  
MAY  
APR  
MAR  
FEB  
JAN

JUN  
MAY  
APR  
MAR  
FEB  
JAN

MAY  
APR  
MAR  
FEB  
JAN

APR  
MAR  
FEB  
JAN

MAR  
FEB  
JAN

FEB  
JAN

JAN



XX p33 FIELD COMMISSION FIELD ADVANTAGE M 15 1 Race 2  
 VIVACIOUSLY-TACTICAL ADVANTAGE FL

Month	12 RACES 18	15 RACES 19
DEC	17+ VAWLR AFr	
NOV		MALE 4YO 11DEC DMn
OCT	'10" vwt&af 16LR 1	
SEP	14" AWLR 22	22+ V&dw 4PE DMn
AUG		
JUL	15- w 12MT MS2	19- &HM 5TI 2
JUN	16- Yw 12MT APa	15+ Yw 4TI 24
MAY		25 Y 12LR 3
APR	23- Y 10MT 28	
MAR	18" Y 10MT 14	
FEB	22 t 30MT 8	18" v 12LR 5
JAN	19 vwB 10MT 23	
	F 25 Y 25MT 10	13" v 12LR 8
	40" Y MSMT 28	=15" 15MN 27
	.19" 25MT MS2	9 10" Y 16PI 10
		9=17" 16LR 27
		10+ v 12LR 13
		11" vw AWPE 28
		15 VAWLR 9
		.13" fAWCT 1
		14" AWLR 15
	s../8"	Yw 16LR 1

XX p34	SIDNEY'S CANDY KARAKORUM FUGITIVE-TEN MOST WANTED PA	FIELDER M 14	1 Race 2
1 RACE 16	5 RACES 17	11 RACES 18	10 RACES 19
17+	8	=11"	MALE 5YO 11DEC <i>MMa</i>
S[MSDMBBt	vWMSPX16	vAWAQ24	11- AWPX23
	vMSPX 6		=9 AWPX14
	17" VMSPX16	AWLR22	=11" AWLR21
	11+ V]MSPX24	YwAWPX28	^=8" vstfAWPX 2
	rF.29 MSPXMMa	AWLR12	=8 AWPX 3
		rg=11" VwAWPX21	^=13
		15" VAWPX30	=16 AWPX 6
			=15- YAWLR 2
		9+ AWPX 6	17+ VAWPX19
		g10 wAWPX17	=13- YAWLR20
		11 vwAWPX17	
		.11 vwAWPX20	
		17" YAWPE24	

XX p35		JUMP START HYATT ROAD-ALLEN'S PROSPECT MD		FINAL PROSPECT		M 12		1 Race 2	
13 RACES 16		8 RACES 17		13 RACES 18		9 RACES 19			
14	vAWLR31	16+	AWLR30	^17-	vAWLR29				
8	vAWLR10	<b>11</b>	VAWLR4	15"	Y50LR9	<b>MALE 7YO 11DEC JNs</b>			
G16-	AWLR19	<b>9-</b>	VAWLR17				<b>22"</b>	s5PX19	
		18-	YAWLR23	<b>18"</b>	Y50LR19		<b>r.53</b>	v16PX20	
		916"	vAWDE30	14"	vAWDE29				
12+	YTAWDE10	13"	VAWLR9	13-	VAWDE6		<b>^12"</b>	Y16PE13	
6-	vAWDE27	15	vAWTI26				<b>=21+</b>	Vs20PX31	
=14+	vAWLR23			<b>18-</b>	Y32LR14		<b>g17</b>	16PX22	
				<b>18+</b>	vAWDE30		<b>.1@"</b>	vwQ12DE11	
14-	v50DE22								
				15-	65DE2		16+	v16DEJNs	
<b>r.25</b>	YAWDE21			↔ <b>15+</b>	Y62Pd24				
							<b>15+</b>	vt&JN16DE8	
12	AWCT23			7	YfAWCT21				
11+	YtAWLR10								
				^13-	vAWLR30				
<b>r.14</b>	YAWLR19								
g^9+	VAWLR16	^18	vAWLR16	<b>9</b>	<b>18</b> AWLR27 VwAWLR19		/20-	35LR3	
9+	VwAWLRGAC								

top: spr dst turf  
 3yo> 10-  
 2yo> 18+ 26- (F)

XX p36

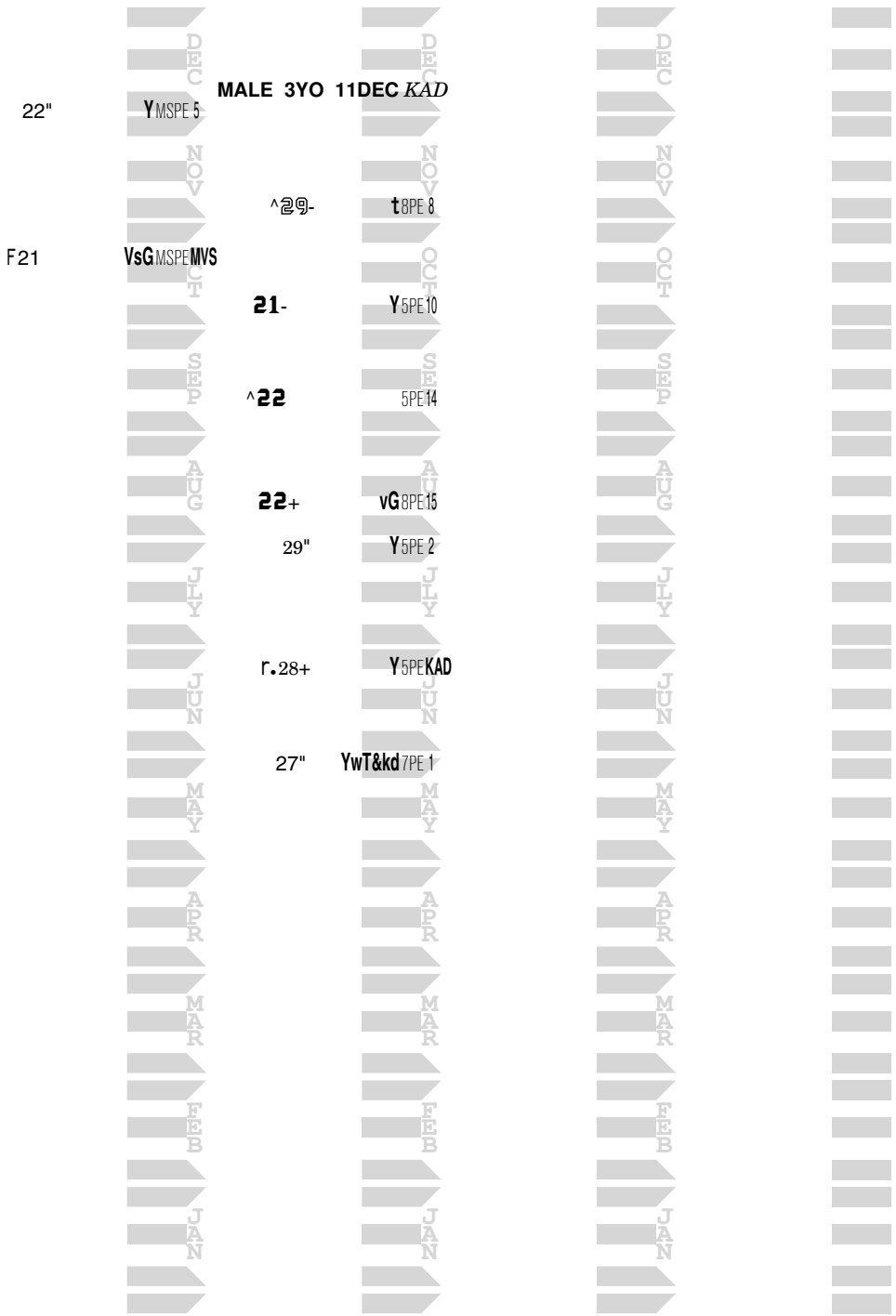
CORINTHIAN  
TOWN TALK-THUNDER GULCH PA

FIREINTHEPULPIT M 16

1 Race 2

2 RACES 18

7 RACES 19



XX p37

RUN AWAY AND HIDE  
MS MARIGOLD-LION HEART LA

FIVE CARD DRAW M 17

1 Race 2

5 RACES 19

MALE 2YO 11DEC M77  
26+ 35LRMT

36

30CD 1

=24+

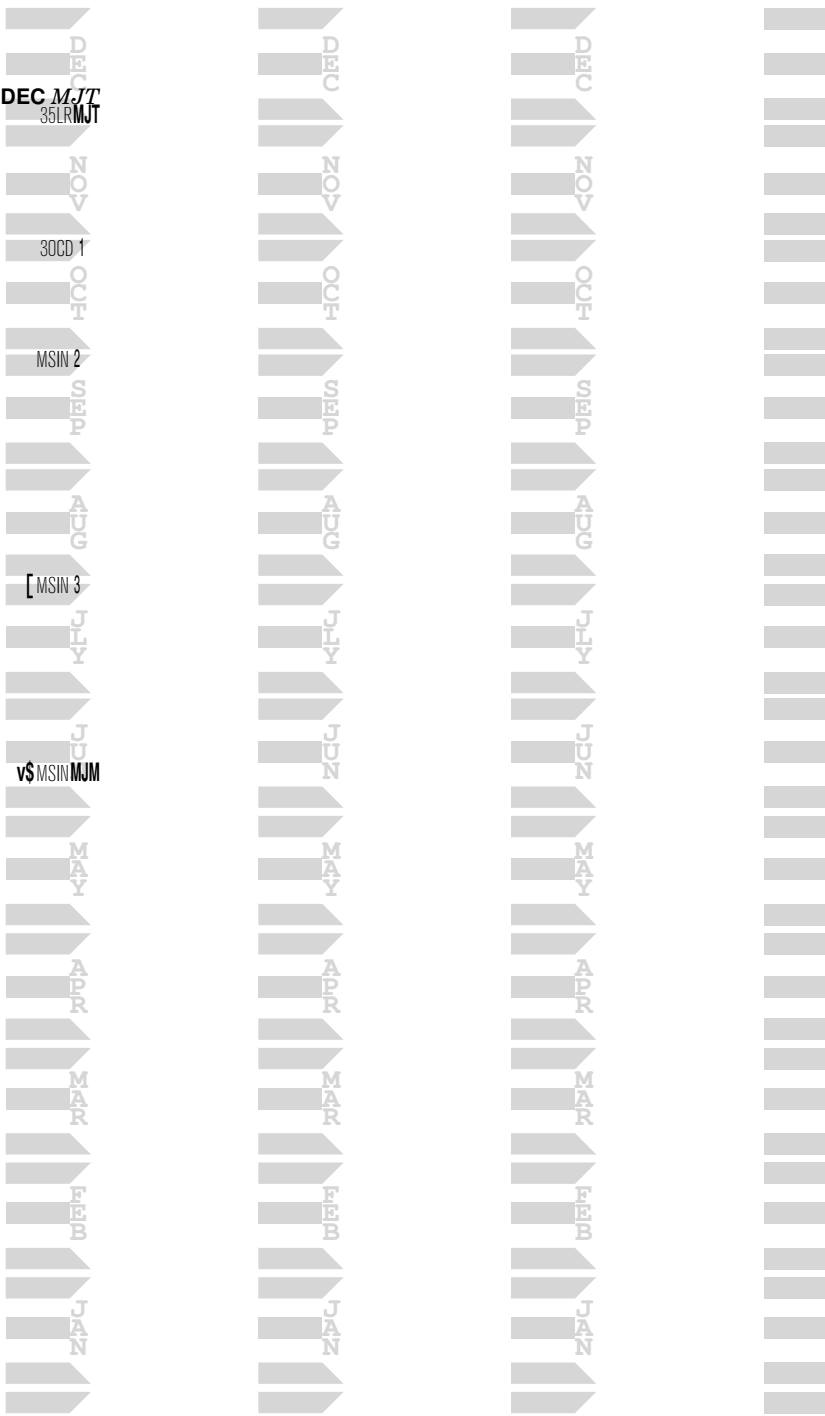
MSIN 2

25"

[MSIN 3

9F32-

vs MSIN MUM





XX p39

BLAME  
OUR YEAR-GRAND SLAM NY

GAME BREAK M 16

1 Race 2

8 RACES 19

Month	Age	Sex	Color	Year	Month	Age	Sex	Color	Year
DEC	3	M	11	11	DEC	3	M	11	11
<b>MALE 3YO 11DEC MJT</b>									
NOV	3	M	31	10	NOV	3	M	10	28
G 31"									
OCT	3	M	2+	10	OCT	3	M	16	31
. 32+									
SEP	22-	M	16	22	SEP	22-	M	16	22
=22-									
=23"									
AUG	21+	M	40	10	AUG	21+	M	40	10
=21+									
JUL	24-	M	40	28	JUL	24-	M	40	28
=24-									
JUN	18+	M	40	BE	JUN	18+	M	40	BE
=18+									
vt 40BE MJM									
MAY	F^=25	M	40	BE	MAY	F^=25	M	40	BE
Yt 40BE DGn									
APR					APR				
MAR					MAR				
FEB					FEB				
JAN					JAN				

Ragozin -- The Sheets <sup>TM 4410^0</sup>

Hip 279

**XX p40**

TIZWAY  
SHAWNEE MOON-FORESTRY KY

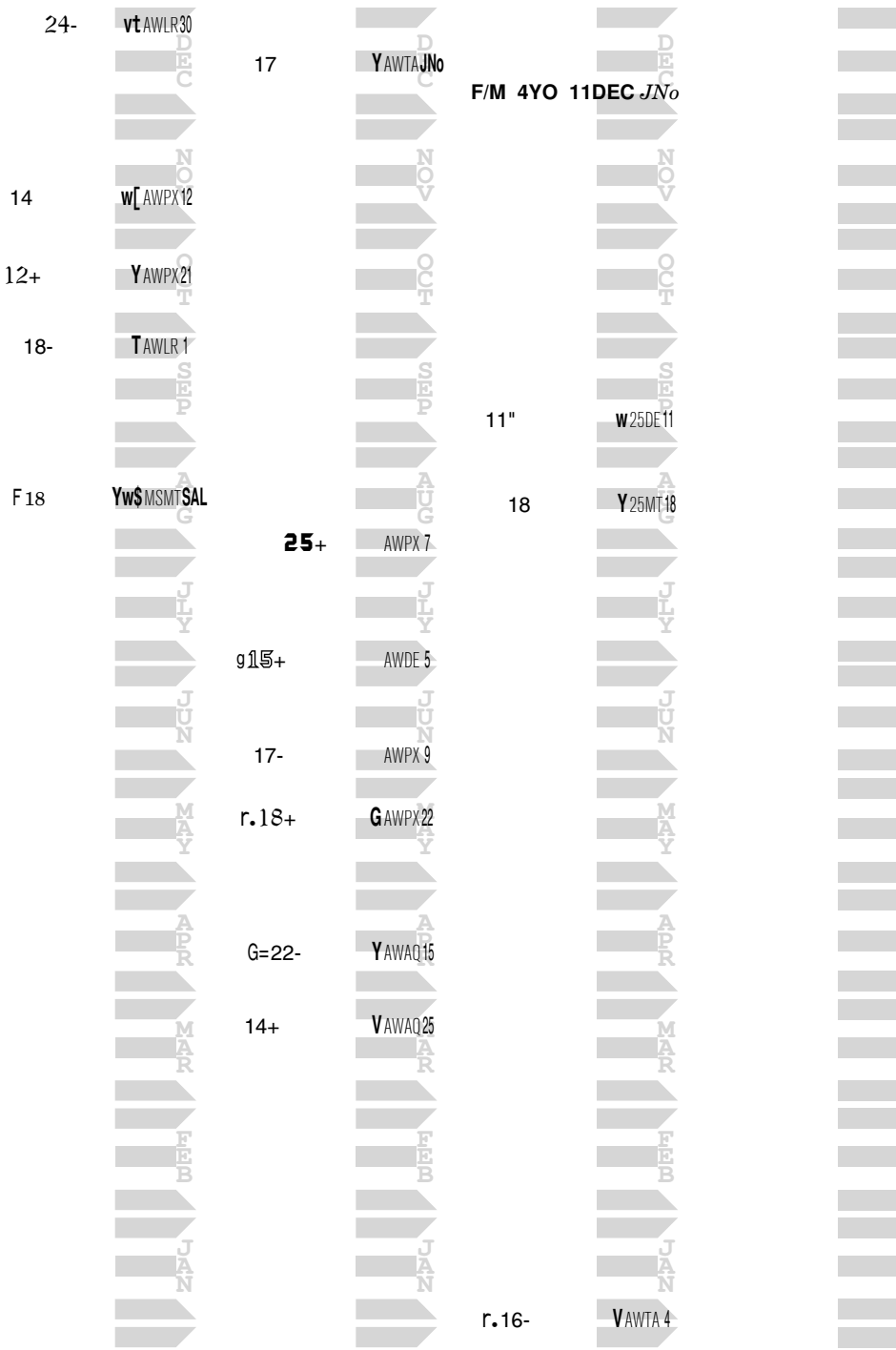
**GIBBY F 15**

**1 Race 2**

5 RACES 17

7 RACES 18

3 RACES 19





XX p41

FREEDOM CHILD  
LUSBY-NORTHERN WOLF MD

GLENGAR M 15

1 Race 2

5 RACES 18

2 RACES 19



11"  
r.13-  
15"  
17-  
F 22"



MALE 4YO 11DEC CAG

14

.14-



XX p42

GOLDENCENTS  
CITIZEN EMMA-PROUD CITIZEN KY

GOLDEN GARY M 17

1 Race 2

6 RACES 19

MALE 2YO 11DEC JNs

9.19"

V40LR24

20"

vAWPX 1

23+

vAWLR20

=14-

vw[MSLR15

F25

YtfMSLR28

.29

YSMSDEJNs



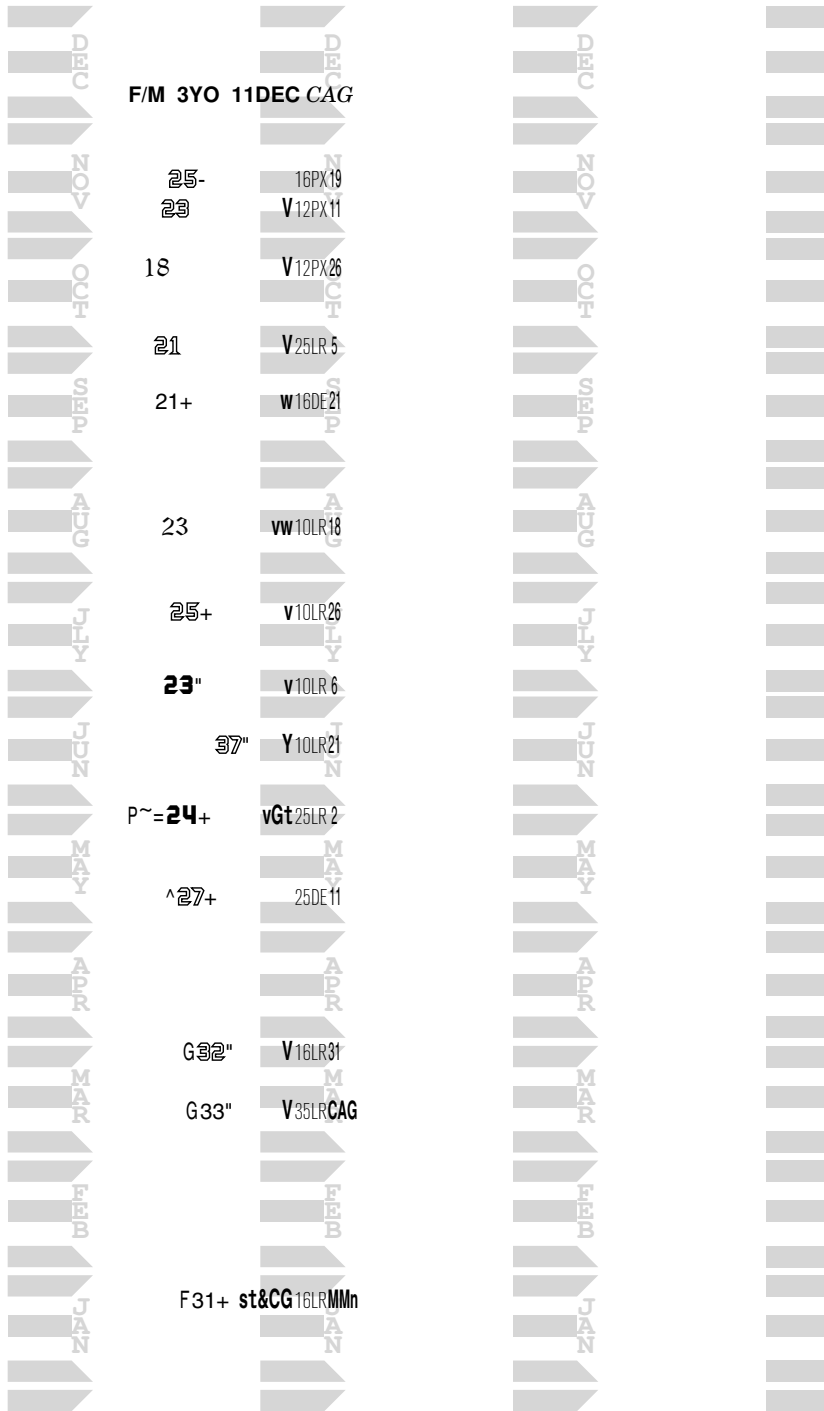
XX p43

BULLSBAY  
LEVEL WITH ME-ROCK SLIDE MD

GRACEYGAB F 16

1 Race 2

14 RACES 19





**XX p45**

FED BIZ  
WET N'RECKLESS-WAR FRONT KY

**HENDAYA F 16**

**1 Race 2**

4 RACES 18

8 RACES 19

^21+

wQTnf&JC 25GP18

F/M 3YO 11DEC CAG  
17 sf25PX 7

22-

35Gw23

20+

Y 40PX CAG

25-

35Gw19

r^18

v&CG 25PX20

F27-

Vf50GP GDo

=16-

AWLR29

=20"

vAWLR 7

20"

AWLR18

=18+

VfAWMT 27

G20-

YwLAWMT JCi



**XX p46**

NOBIZ LIKE SHOBIZ  
TAKE THE CAKE-FLY SO FREE KY

**I'LL TAKE THE CAKE F 14**

**1 Race 2**

9 RACES 16

12 RACES 17

11 RACES 18

13 RACES 19

Month	9 RACES 16	12 RACES 17	11 RACES 18	13 RACES 19
DEC			AWWO16	F/M 5YO 11DEC LS2
NOV	75WO 2	AWWO10	AWWO16	
OCT	w40WO23	vQ AWWO18	25WO23	
SEP		vw20WO SCp	vawWO 2	14+ Y&bk 25PE 6
AUG	Qt] AWWO21	Y&sc 10WO22	vw25WO24	
JUL	Y[ AWWO 8			17- 25PE12
JUN		vw 10WO 1		
MAY	Yt AWWO18		AWWO23	
APR		10WO10		
MAR			AWWO26	.12" w25PE22
FEB	w40WO19	Y 10WO20	AWWO 1	17- sAWLR16
JAN				
DEC			AWWO 1	11 vw25PE25
NOV	vtMSWO16	f20WO19		
OCT			AWWO30	^15" 25PE20
SEP	MSWO12	f20WO25		
AUG			AWWO 3	.15 vAWPE 1
JUL	MSWO Nno	Y40WO 2	AWWO13	12" w25PE16
JUN		Vf75WO 6		
MAY			AWWO22	13 v25PE27
APR		Y75WO22		^13 v25PE LS2
MAR				
FEB				20- v&ls 25PE 2
JAN				13 Vwf AWPE 9
DEC				18 Yw AWPE25

XX p47

EL PADRINO  
GRITTY GAL-WAR PASS PA

IRISH PAUL M 17

1 Race 2

3 RACES 19

MALE 2YO 11 DEC SAL

16"

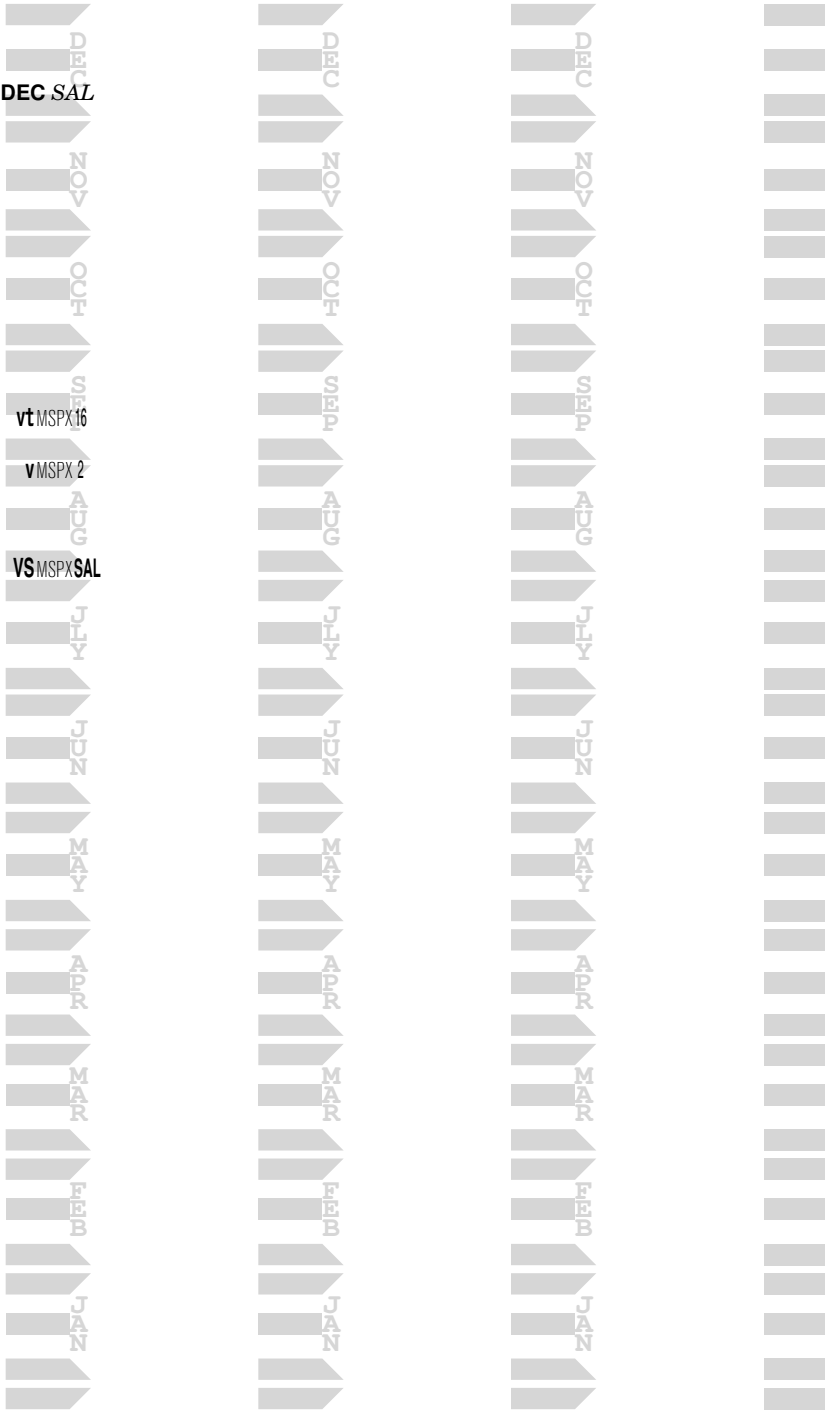
vt MSPX 16

20-

v MSPX 2

F 18+

VS MSPX SAL



XX p48

EL PADRINO  
SMILESTONE-MIZZEN MAST PA

ISABELLA SMILE F 16

1 Race 2

1 RACE 18

5 RACES 19

9F.17-



F/M 3YO 11DEC SAL

16



~16

918

14

.17-





Ragozin -- The Sheets <sup>TM 4410^0</sup>

Hip 291

**XX p49**

SHANGHAI BOBBY  
IT'S THE CATS MEOW-STORMY ATLANTIC KY

**IT'S A DOOZY F 15**

**1 Race 2**

3 RACES 17

12 RACES 18

9 RACES 19

20-

vwmSLR22  
DEC

9^31-

v12LR29  
DEC

25

vmsLR1  
NOV

**F/M 4YO 11DEC AA3**

27"

Vs5LR 9  
NOV

F31+

YQ[msLRAA3  
OCT

^=31

VT16LR25  
OCT

29"

Q16LR 5  
SEP

=31

V16LR29  
SEP

rg.22

SEP

vQ12DE 8  
AUG

=22-

vt5CN 4  
AUG

20-

Q12DE15  
AUG

^=27

v10CN16  
AUG

=23-

st16LR25  
JULY

^31+

sQt14LR 4  
JULY

=20-

JUN

Yt25PE22  
JUN

9=21-

t16LR14  
JUN

^=26-

MAY

VAWLR 2  
MAY

=19"

Y16PI24  
MAY

=18-

APR

AWLR 5  
APR

=22-

Y16LR 4  
APR

24

Y25LR14  
APR

23"

vt35LR31  
MAR

22-

FEB

35LR 4  
FEB

30

JAN

vB AWLR21  
JAN

**XX p50**

YES IT'S TRUE  
RAGTIME ROAD-DIXIELAND BAND FL

**JACK STRAIGHT M 15**

**1 Race 2**

6 RACES 17

9 RACES 18

12 RACES 19

.14-

WMSPE23

11"

WAWPETCK

MALE 4YO 11DEC TCK

18"

30PX21

20-

VtMSPEFA3

.16+

vw&TK25PE 9

11

V10PE 2

◇ 18

vMSWO 9

15

25PE19

15

v25PE18

◇ 14"

vMSWO17

18-

v25PX 2

14+

16PE25

F^=21"

t[MSWODRs

15

w25PE25

^15-

Yt16PE28

20-

Y25PE 4

.17-

QAWLR22

12"

20PX15

=16"

vAWLR30

17"

YG25PE28

.12-

vT20DE18

13"

sAWPE18

14

vw25PE25

15+

25PE30

^14-

v25PE 7

12"

tfawAQ27

s18"

YAWPE17

XX p51

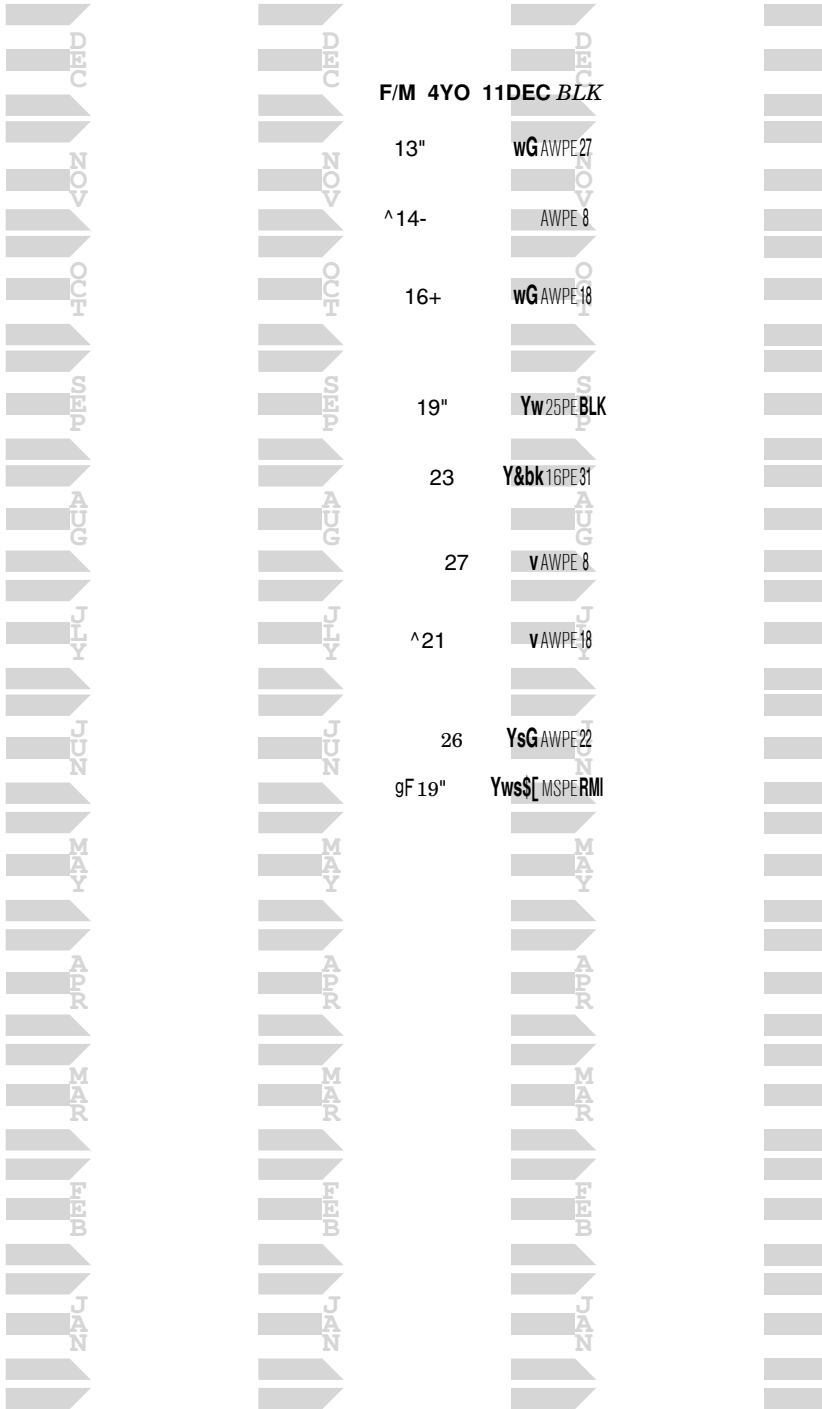
BUSTIN STONES  
TJS STORMY WIT-STORMELLO PA

Hip 293

JAKARTA F 15

1 Race 2

9 RACES 19



**XX p52**

REVOLUTIONARY  
I LOST MY CHOO-WESTERN EXPRESSION KY

**JAMMIN JIMTOWN**

**M 16**

**1 Race 2**

2 RACES 18

12 RACES 19

F=25"

r.37-



**MALE 3YO 11DEC CAG**

15"

w7PX CAG

.17"

V6MT 27

15"

Yw5MT 13

15"

Yw7MT 15

=15"

16MT 18

=17-

16MT 26

=17-

16MT 28

=15+

Y16MT 8

=17"

w20GP 18

=20+

Tf20GP 22

=22+

S20GP 20

r.25  
Gelded

vQTf25GP JNo



Ragozin -- The Sheets <sup>TM 4410^0</sup>

Hip 296

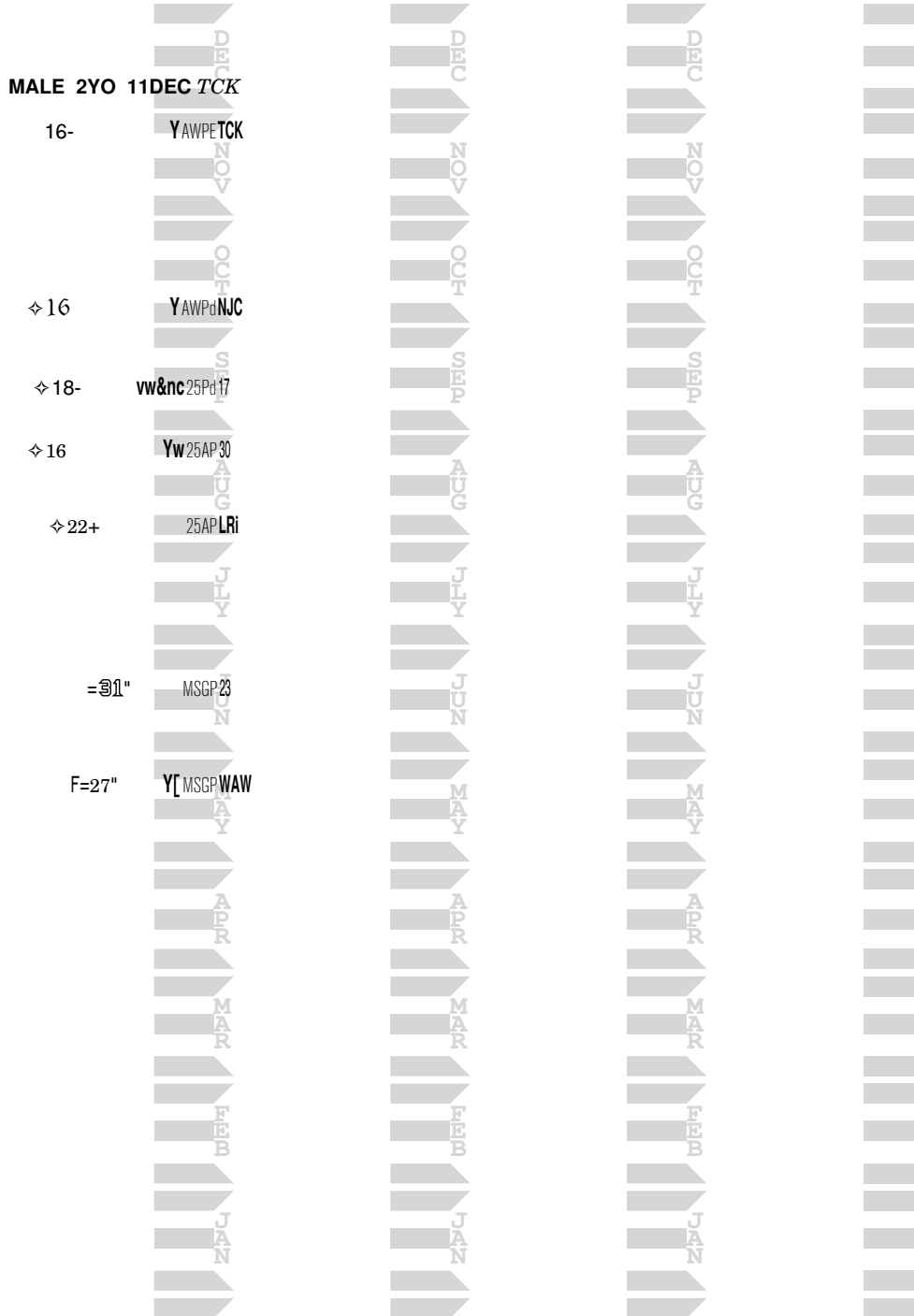
XX p53

IOBAAL  
QUIET SHINE-REAL QUIET FL

JOHNNY CAB M 17

1 Race 2

7 RACES 19



XX p54

PIONEER OF THE NILE  
LADY BYAR-BYARS KY

KEY TO THE NILE M 15

1 Race 2

1 RACE 17

2 RACES 18

4 RACES 19

F 25



26-  
GELDED

= 24"



MALE 4YO 11DEC KAD

17-

26"

29+

27



XX p55

TEMPLE CITY  
VENTURINI-BERNARDINI ON

KUNAL M 17

1 Race 2

4 RACES 19

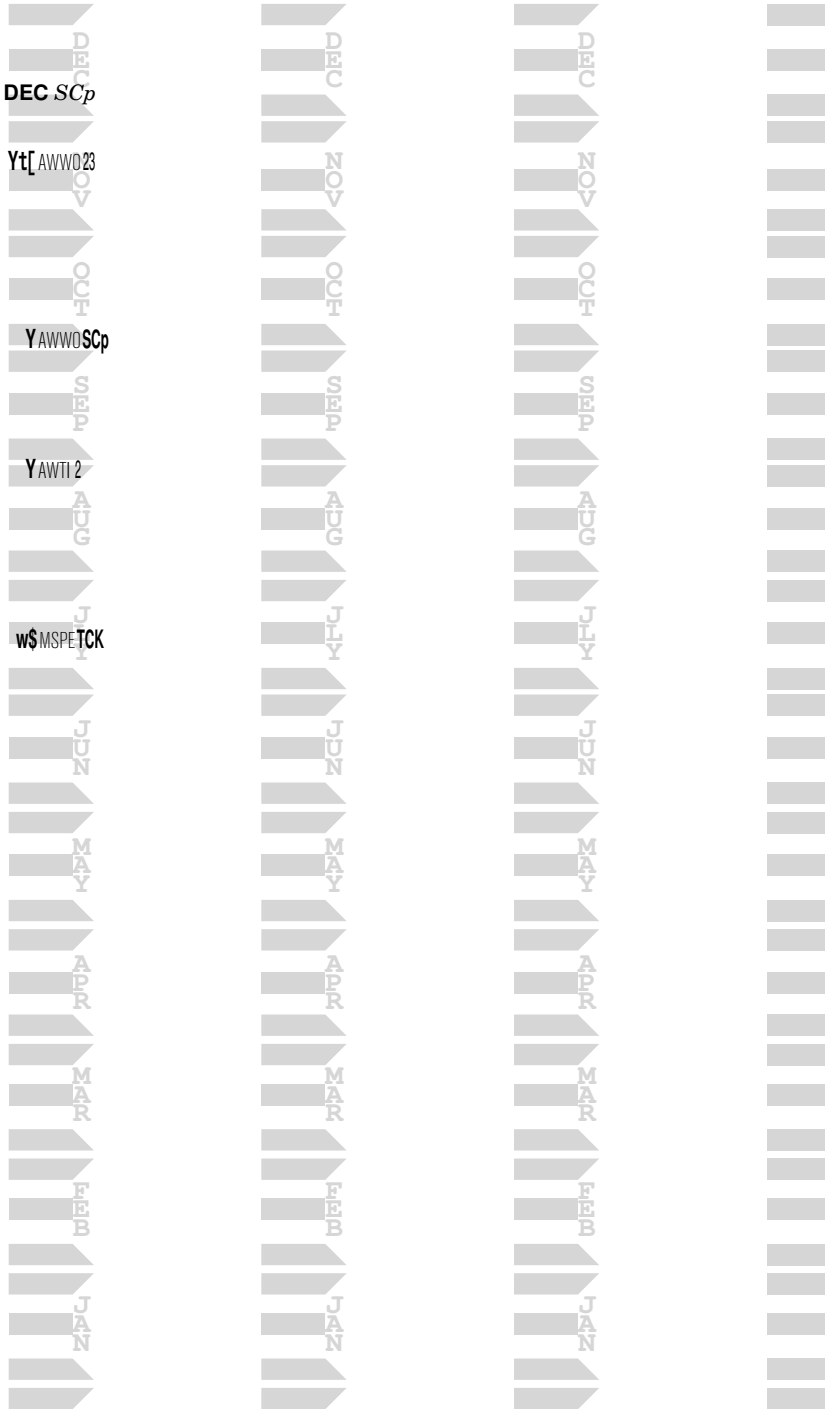
MALE 2YO 11DEC.SCp

◇ 19- Yt[AWWQ23

^=14" YAWWQSCp

19 YAWTI2

F^23+ w\$MSPE.TCK







# Ragozin -- The Sheets <sup>TM 4410^0</sup>

Hip 303

XX p57

JUMP START  
VERY DISTINCTIVE-MUTAKDDIM PA

LATE BREAKING NEWS M 13

1 Race 2

10 RACES 16

8 RACES 17

7 RACES 18

8 RACES 19

.14-

V AWPX 12

DEC

MALE 6YO 11DEC JNs

g..17+

vw AWPX 22

13-

vt AWPX 18

^19+

v AWPX 27

.28" V25PX JNs

g21

V AWPX 25

NOV

18

& JN 25PX 28

12+

AWPX 11

10-

Vs AWPX 7

19+

v AWPX 6

.13+

vQ AWPX 19

=16

v AWPX 23

.26-

AWPX 17

17+

AWPX 9

45"

AWPX 4

r^14

VQ AWPX 2

'16-

VB AWPX 1

18-

Y AWPX 10

14"

vQ AWPX 5

13

wB AWPX 22

114

w MSPE 20

S+

Vw AWPX 8

rg=18-

v AWPX 21

56-

AWPX 29

20

MSMT 25

14"

vw AWPX 10

17

AWPX 16

15

V AWPX 4

24"

Y MSMT Smz

18

AWPX 20

18

Y AWPX 26

r.10-

Vf AWPX 5

top: spr dst turf  
2yo> 23 18+(F)



XX p59

FLAT OUT  
LITTLEBITABLING-CARSON CITY MD

LITTLEBITALILY F 16

1 Race 2

2 RACES 18

3 RACES 19

r 18

F 18"



F/M 3YO 11DEC TCK  
22-

30"

32"



Ragozin -- The Sheets <sup>TM 4410^0</sup>

Hip 308

XX p60

PROSPECTIVE  
VIVID SUNSET-MT.LIVERMORE FL

LOVELY SUNSET F 15

1 Race 2

4 RACES 17

9 RACES 18

10 RACES 19

=17"

vW25GP24

P~=20+

Yw16GP11

F/M 4YO 11DEC MSn

^=18"

[30Gw24

=20-

vt50Gw3

31"

vQ16LR18

P~=18

Y30LR14

F22"

VsfMSGwMce

=20-

YawDE 5

^=16

v20DE25

=16

v16DE11

=19-

vtAWLR11

=16

SawDE28

=20+

YawDE 8

=14"

vAWLR14

=20+

Y16DE13

=18

v30MT30

=16-

vW16DE27

=17

AWLR16

=16-

16DE MSn

P~=19

vAWLR 6

r.29"

v50LR MSn

=22

t16GP17

P~=18"

Y16GP 2

XX p61

BODEMEISTER  
RED'S ROUND TABLE-CUVEE MD

MATTYMEISTER M 17

1 Race 2

3 RACES 19

MALE 2YO 11DEC HIM

g. 36"

V 16LR24

28"

Y 10LR11

F 28"

QAWLRHM



Ragozin -- The Sheets <sup>TM 4410^0</sup>

Hip 310

XX p62

GOLDEN LAD  
BELTERRA-UNBRIDLED MD

MINE NOT MINE M 17

1 Race 2

2 RACES 19

MALE 2YO 11DEC CAG  
16- AWLR7

F 16" VwsStf AWLR CAG



Ragozin -- The Sheets <sup>TM 4410^0</sup>

Hip 311

XX p63

JUMP START  
DUNE DRIVE AVALON-HOLY BULL PA

MISS AVALON F 13

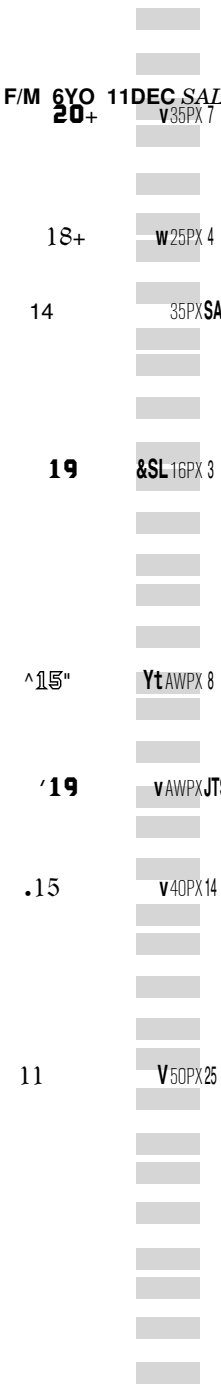
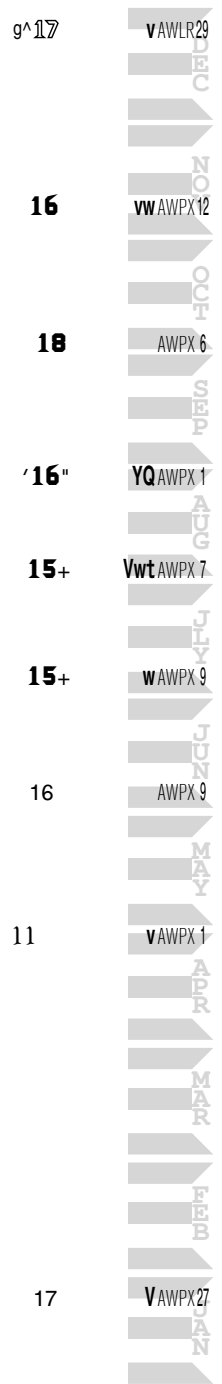
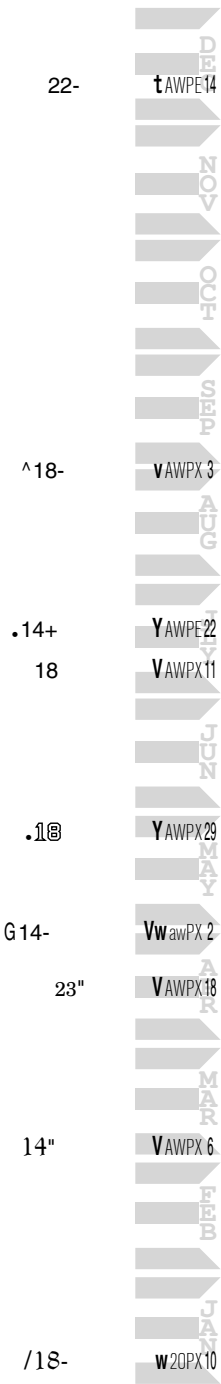
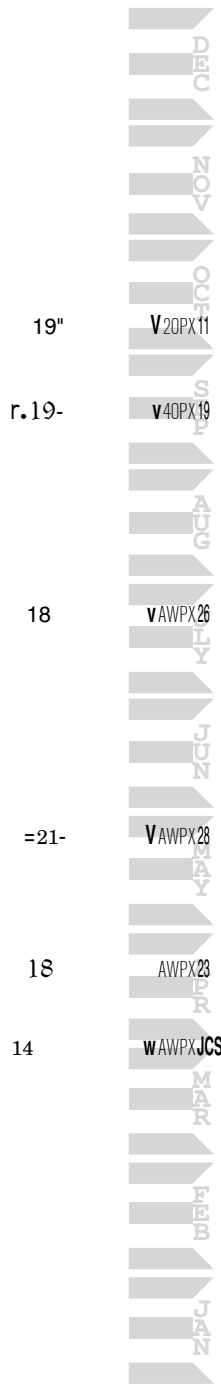
1 Race 2

6 RACES 16

9 RACES 17

9 RACES 18

8 RACES 19



top: spr dst turf  
2yo> 17" (F)

Ragozin -- The Sheets <sup>TM 4410^0</sup>

Hip 312

XX p64

PIONEER OF THE NILE  
HOKA HE-DIXIE UNION MD

MISS JACKIE G F 15

1 Race 2

2 RACES 17

2 RACES 18

3 RACES 19

=22-

F31+



P~ = 24-

37"



=20

g=24-

^=18"

F/M 4YO 11DEC HDz



v25LR4

vAWLR21

25P17



XX p65

UNION RAGS  
NEWSTOUSE-UNBRIDLED'S SONG PA

MOTHER'S DAY

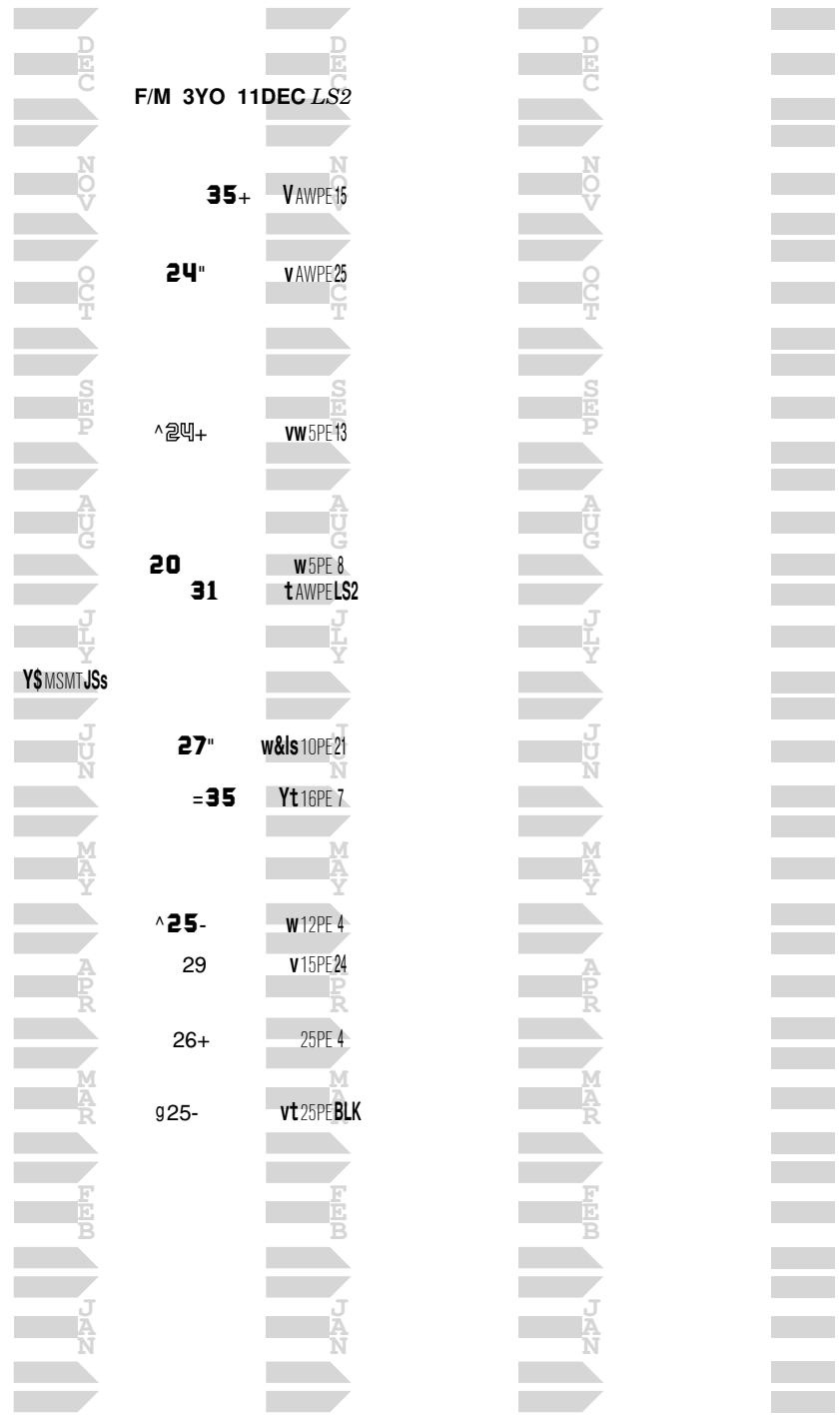
F 16

1 Race 2

1 RACE 18

11 RACES 19

F=24-





XX p67	KITTEN'S JOY MAJESTIC FELINE-JOHAR NY	NEETEE RIDES AGAIN	F 14	1 Race 2
4 RACES 16	6 RACES 17	4 RACES 18	4 RACES 18	9 RACES 19
				F/M 5YO 11DEC MJR
27-	~^=25"	^34"	V5LR24	36" V5LR 9
21	=25+			
29+		42-	vQ 16LR 5	=25 Y 16LR 27
		33-	YQ 16LR 16	
F.39-		^=21-	12LR29	=21+ Y 16LR 1
				^=21" 16LR 13
				=23- 14LR 28
	=13			=20- v 14LR 31
				=20" vwB 16P111
				=21" V 16LR 18
				35 V 5LR 29
	31-			
	19			
	r.21			

XX p68

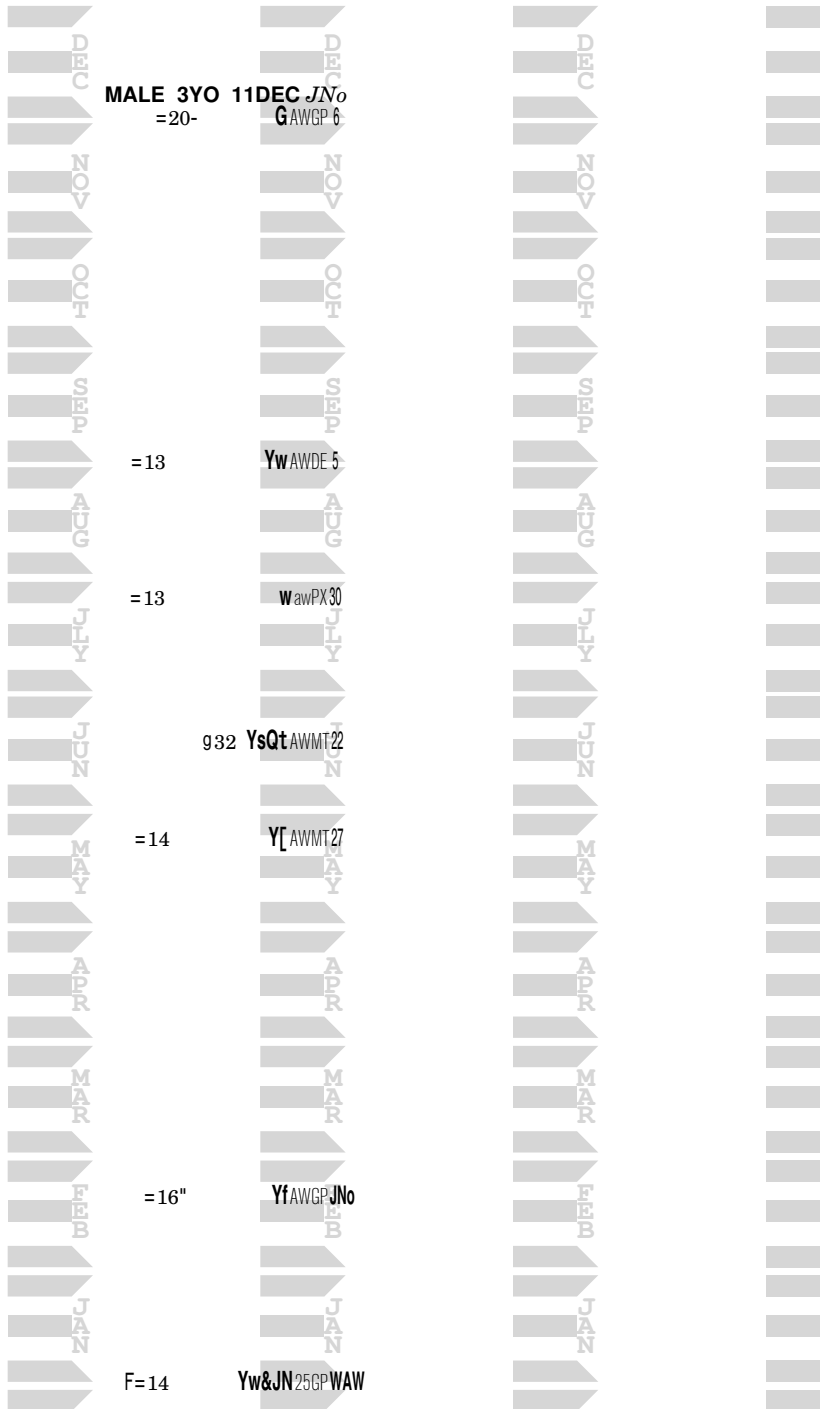
NO NAY NEVER  
TO MY VALENTINE-FR-DYHIM DIAMOND-IR-IRE

NEVER HAVE I EVER-IR

M 16

1 Race 2

7 RACES 19



XX p69

FAIRBANKS  
WHAT IS NEXT-DEVIL'S BAG PA

NEXT QUEEN F 16

1 Race 2

6 RACES 19

Month	Age	Sex	Color	Notes
DEC	3	F	M	
DEC	3	F	M	
DEC	3	F	M	
DEC	3	F	M	
DEC	3	F	M	
DEC	3	F	M	
NOV	3	F	M	
NOV	3	F	M	
NOV	3	F	M	
NOV	3	F	M	
NOV	3	F	M	
NOV	3	F	M	
OCT	3	F	M	
OCT	3	F	M	
OCT	3	F	M	
OCT	3	F	M	
OCT	3	F	M	
OCT	3	F	M	
SEP	3	F	M	
SEP	3	F	M	
SEP	3	F	M	
SEP	3	F	M	
SEP	3	F	M	
SEP	3	F	M	
AUG	3	F	M	
AUG	3	F	M	
AUG	3	F	M	
AUG	3	F	M	
AUG	3	F	M	
AUG	3	F	M	
JUL	3	F	M	
JUL	3	F	M	
JUL	3	F	M	
JUL	3	F	M	
JUL	3	F	M	
JUL	3	F	M	
JUN	3	F	M	
JUN	3	F	M	
JUN	3	F	M	
JUN	3	F	M	
JUN	3	F	M	
JUN	3	F	M	
MAY	3	F	M	
MAY	3	F	M	
MAY	3	F	M	
MAY	3	F	M	
MAY	3	F	M	
MAY	3	F	M	
APR	3	F	M	
APR	3	F	M	
APR	3	F	M	
APR	3	F	M	
APR	3	F	M	
APR	3	F	M	
MAR	3	F	M	
MAR	3	F	M	
MAR	3	F	M	
MAR	3	F	M	
MAR	3	F	M	
MAR	3	F	M	
FEB	3	F	M	
FEB	3	F	M	
FEB	3	F	M	
FEB	3	F	M	
FEB	3	F	M	
FEB	3	F	M	
JAN	3	F	M	
JAN	3	F	M	
JAN	3	F	M	
JAN	3	F	M	
JAN	3	F	M	
JAN	3	F	M	

F/M 3YO 11DEC CAG

26- vB 10PX 30

35+ tf 10PX CAG

.32+ Vt&CG 10PX 27

25" 10PX 8

30" Ys 10PX 31

F 30" vC MSPX RVa

XX p70

PAYNTER  
WINDOW WOMAN-SKIP AWAY KY

NOBLE WEED M 16

1 Race 2

11 RACES 19

Month	Age	Sex	Height	Weight	Class	Days
DEC	3YO	MALE	17"	21+	CAG	25PX 7
NOV	3YO	MALE	17"	21+	CAG	40PX
OCT	3YO	MALE	17"	21+	CAG	25PX 26
SEP	3YO	MALE	17"	21+	CAG	AWPd 3
AUG	3YO	MALE	16"	21+	CAG	40Pd 3
JUL	3YO	MALE	19+	21+	CAG	YwMSPd 11
JUN	3YO	MALE	18+	21+	CAG	Y]MSPd 24
MAY	3YO	MALE	17-	21+	CAG	MSPd 8
APR	3YO	MALE	19	21+	CAG	[MSPd 18
MAR	3YO	MALE	21+	21+	CAG	YMSPd 29
FEB	3YO	MALE	10+	21+	CAG	MSPd RGP
JAN	3YO	MALE			CAG	

Ragozin -- The Sheets <sup>TM 4410^0</sup>

Hip 320

XX p71

INCLUDE  
TAKE A CHECK-TOUCH GOLD MD

3 RACES 16

7 RACES 17

NO PICNIC F 14

11 RACES 18

1 Race 2

9 RACES 19

21  
P~=19

F 24"



24+  
19"

17

15"

18

.16+

14



B AWLR 8  
AWLR 2

V AWLR 8

v AWLR 10

v AWLR 19

vt AWLR 29

vw AWLR 9

rg. 16+

..14

15

..20

18

.12+

^18+

13



12+

13+

.16

Y&MZ 40PX JTr

Yws&jt 25PX 25

vw 25PX MZa

&MZ 25PX 14

Y AWLR 18

V AWLR 25

AWLR 9

vw AWLR 14

F/M 5YO 11DEC CAG

9.21- stf 12PX CAG

19 vt&CG 16PX 22

27+ Yt 35PX 30

16 20PX 8

15- V 35LR 8

15- Yw 25PX 6

g 18- v AWLR MMa

/18- vtf&mm 25PX KAD

g 12" vw&kd 16PX 1

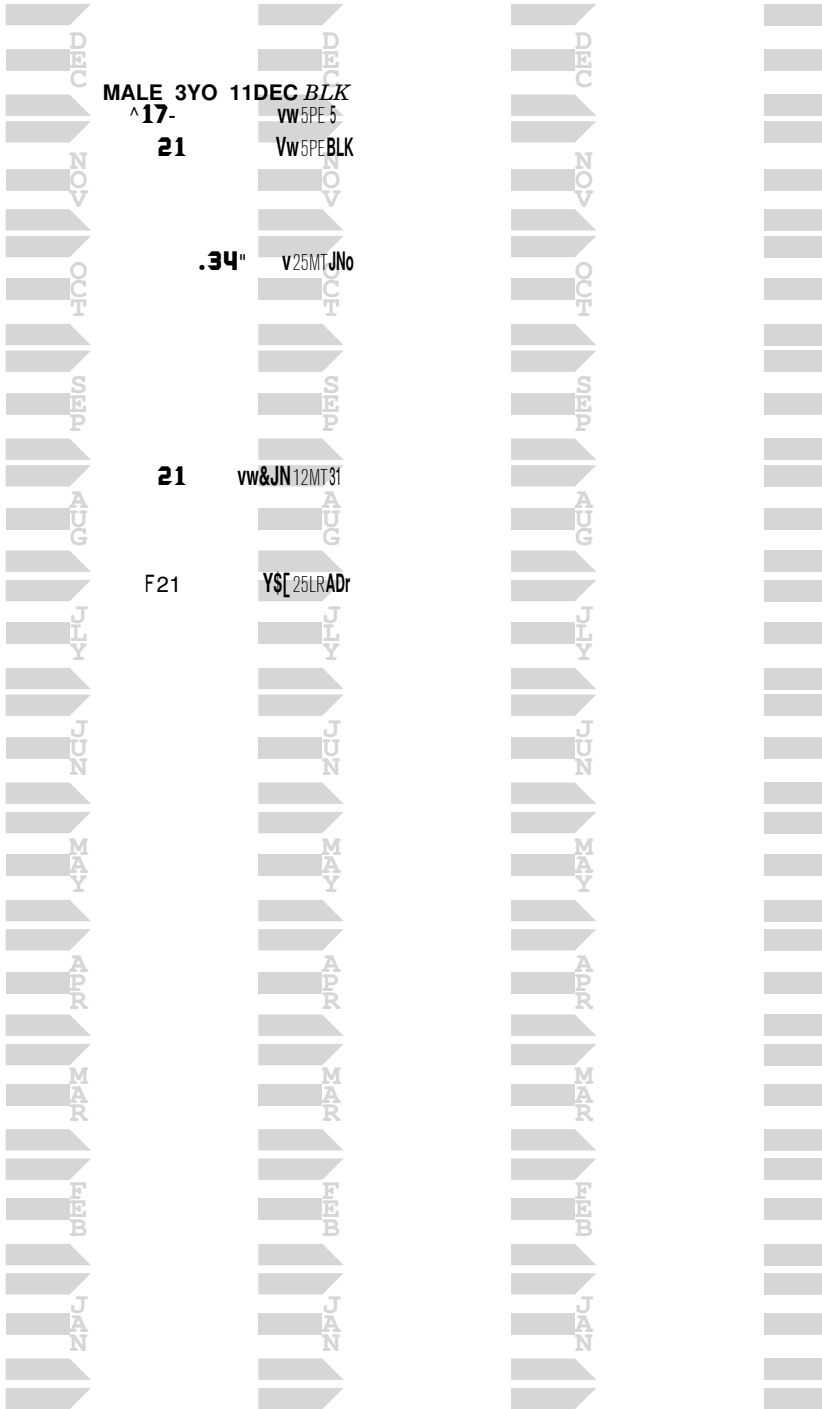
XX p72

SUPER SAVER  
STORMY GIGI-STORM BOOT KY

OCEANOGRAPHER M 16

1 Race 2

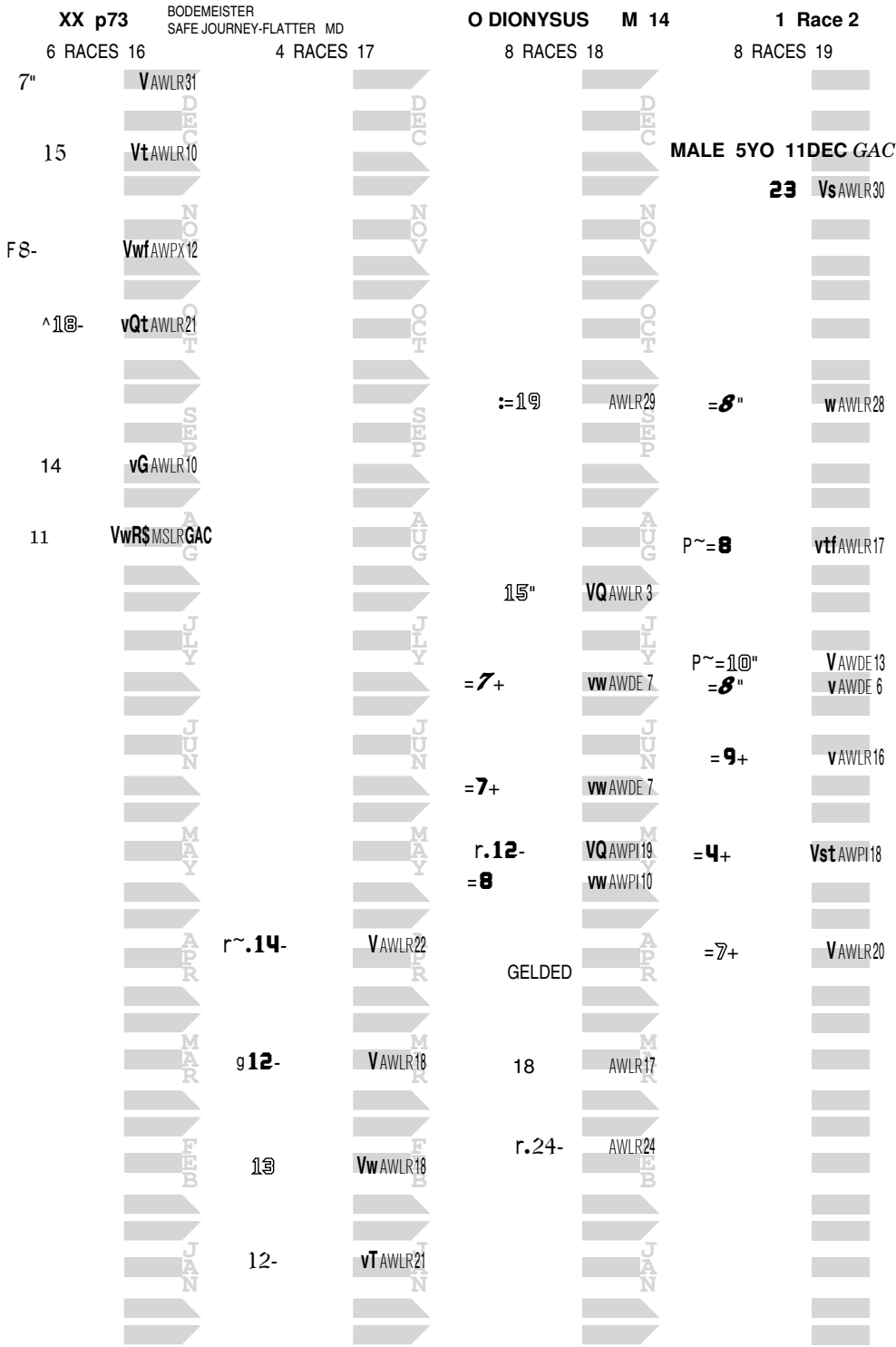
5 RACES 19





Ragozin -- The Sheets <sup>TM</sup> 4410^0

Hip 323



XX p74

SUPER NINETY NINE  
HOMEMAKER-AFTERNOON DEELITES MD

ORTINOLA F 16

1 Race 2

14 RACES 19

Month	Age	Category	Month	Age	Category
DEC	21-	F/M 3YO 11DEC AA3 16LR 8	DEC		
NOV	31+	V 16LR 16	NOV		
	19+	Vw 16LR AA3			
OCT	22-	v&ds 10LR 5	OCT		
SEP	23-	25LR 22	SEP		
	26+	[AWPX 1			
AUG	19+	vAWLR 28	AUG		
JULY	^=22	vAWLR 11	JULY		
JUN	g 18-	vAWLR 14	JUN		
MAY	23-	wsQt MSP11	MAY		
APR	=24"	Y MSLR 18	APR		
MAR	24-	Vt MSLR 24	MAR		
	21"	T MSLR 1			
FEB			FEB		
JAN	GF^22	MSLR CDn	JAN		

XX p75

IT'S NO JOKE  
PHOTO SESSION-CALLER I.D. FL

OVER EXPOSED F 15

1 Race 2

8 RACES 18

8 RACES 19

Month	Age	Sex	Callers	Month	Age	Sex	Callers
DEC	22-	G	AWPE27	DEC			
NOV	/21-		AWLR 8	NOV			
OCT	.13+	VW	AWPE 9	OCT	19	VW	6PE13
SEP	15"		AWPE TCK	SEP	19		6PE25
AUG	21+	Y&TK	25PE15	AUG			
JUL	23		AWPE22	JUL	.18+	W	5PE23
JUN	^15-	WS	MSPE 1	JUN			
MAY	F=19"		MSPE TKS	MAY	=16+		16P127
APR				APR	r9.15+	YwQ	12P112
MAR				MAR	18-	B	16PE 4
FEB				FEB	16+	w	16PE27
JAN				JAN	15-	w	[ 15PE 9

F/M 4YO 11DEC TCK

Ragozin -- The Sheets <sup>TM 4410^0</sup>

Hip 326

XX p76

OVERANALYZE  
LA CHICA SENSUAL-LIGHTNIN N THUNDER FL

OVER SENSUAL M 15

1 Race 2

6 RACES 17

12 RACES 18

10 RACES 19

Age	Sex	Month	Year	Track	Age	Sex	Month	Year	Track	Age	Sex	Month	Year	Track
.19+		V	MSPE	23										
P~19+		Y	MSWO	10	^1@	w	[&JN	30GP	13	MALE 4YO 11DEC	CAG			
										14+	v	AWPX	CAG	
15"				32WQ	15	17-	Yf	AWGw	14					
22-				25WQ	4	17"	Ysf	AWGw	2	14"	v	AWPX	29	
										16-	V	AWPE	19	
19		v	40WQ	13	r.14+	Vbf	50Gw	4						
F20		v	\$25WQ	SCp						.15"	V	AWMT	2	
					r.1@"	VQBf	AWGP	3						
					10+	v	AWGP	26						
					14"	w	Bt	f40GP	9	9-	v	w	awPX	29
					'14"	v	20GP	2						
										14+	w	25PX	9	
					15-	V	10GP	SJ2						
										13	v	25MT	26	
					^25	Y	25TA	11		22-	A	WGP	30	
					26-	Y	25TA	TDL						
										12"	v	Gf	awGP	14
					24"	V	]MSPE	18		17-	Ysf	AWGP	JNo	

XX p77

SUPER SAVER  
MOLTO VITA-CARSON CITY KY

PANTHERA ONCA F 17

1 Race 2

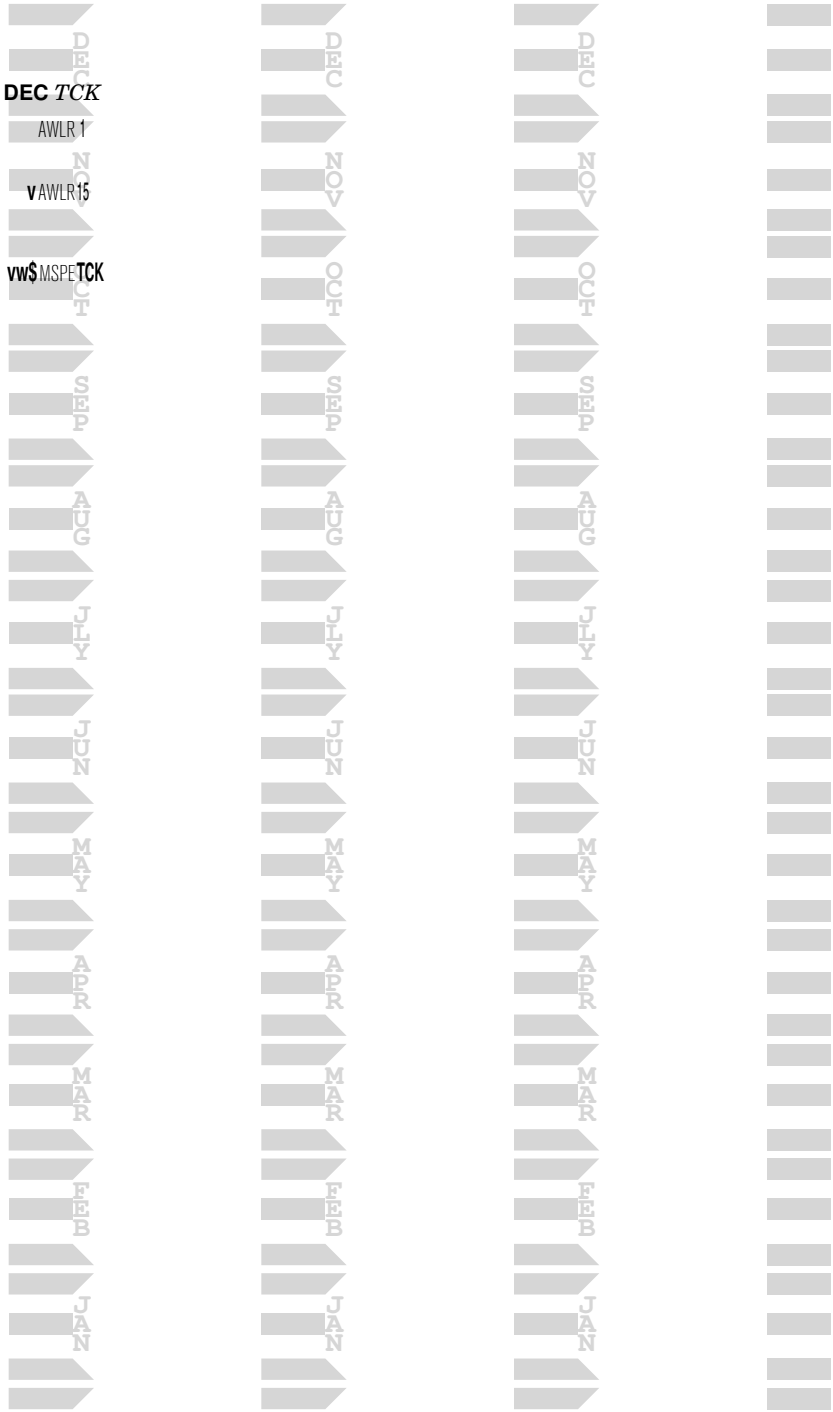
3 RACES 19

F/M 2YO 11 DEC TCK

r.20+

19

F15"



XX p78

AIKENITE  
STEAL THE DANCE-TAPIT KY

PAUL'S PLUNDER F 17

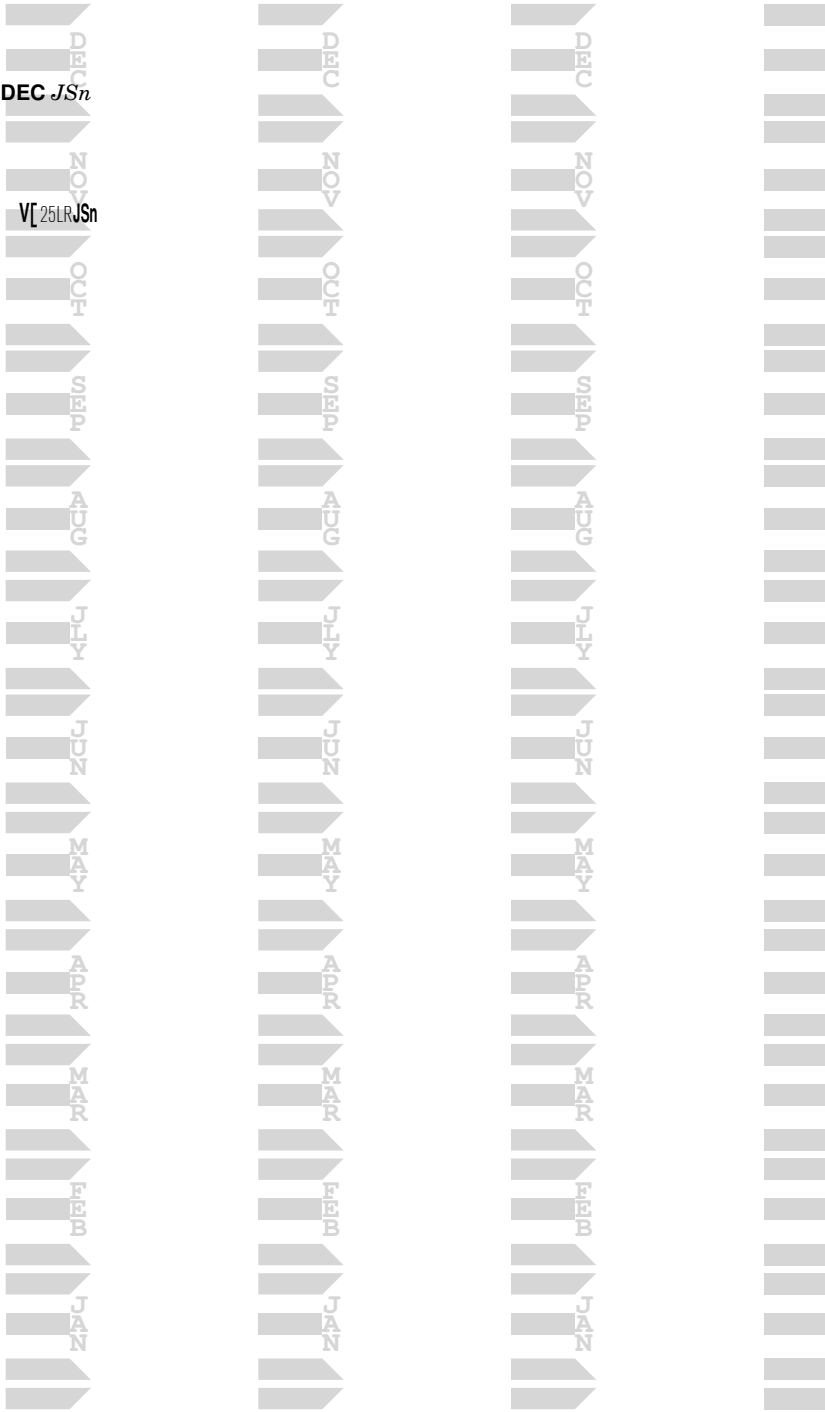
1 Race 2

1 RACE 19

F/M 2YO 11DEC JSn

F19

V[25LR JSn



Ragozin -- The Sheets <sup>TM</sup> 4410<sup>AD</sup>

Hip 331

XX p79

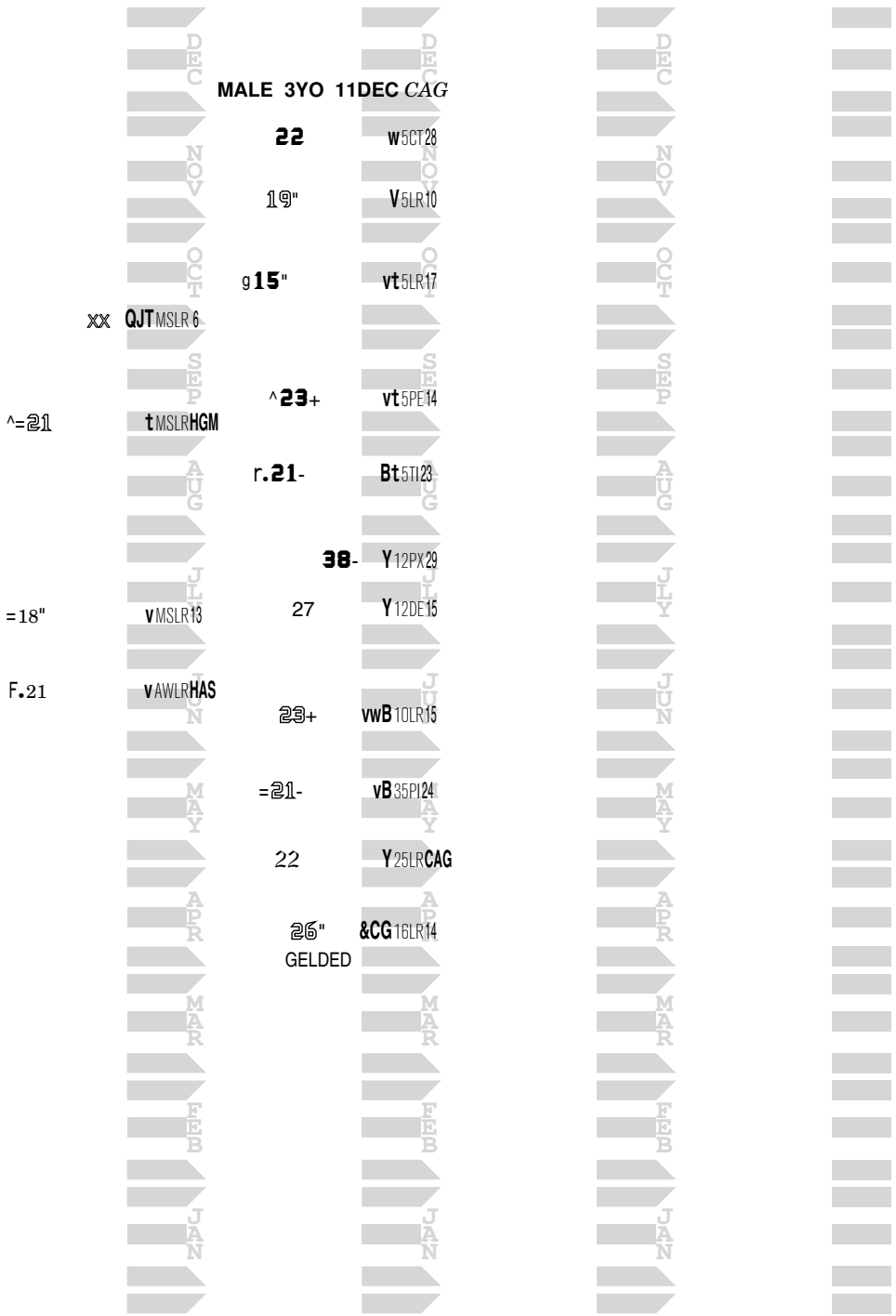
JUMP START  
SMOOTH TALKING-DIXIE UNION MD

PEP TALKING M 16

1 Race 2

4 RACES 18

11 RACES 19

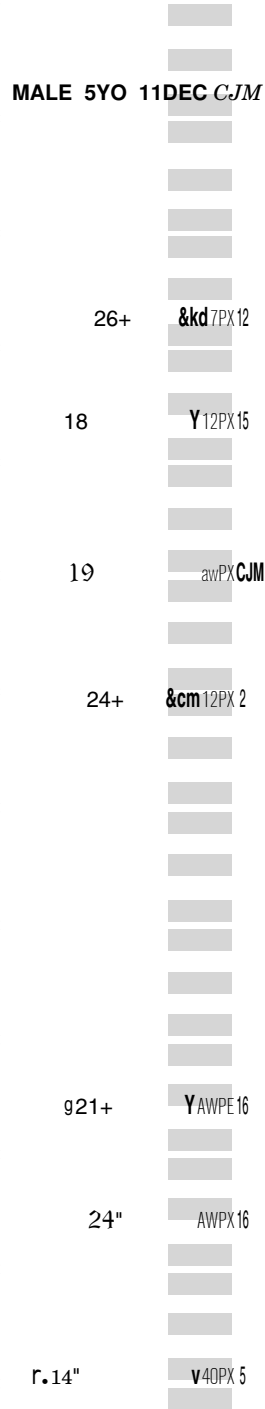
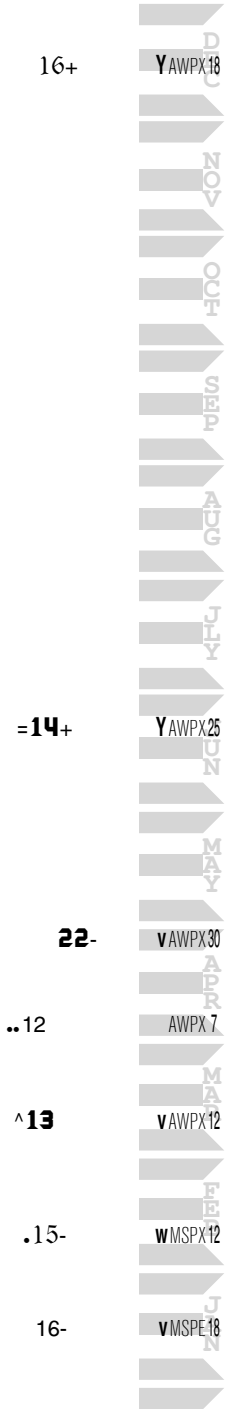
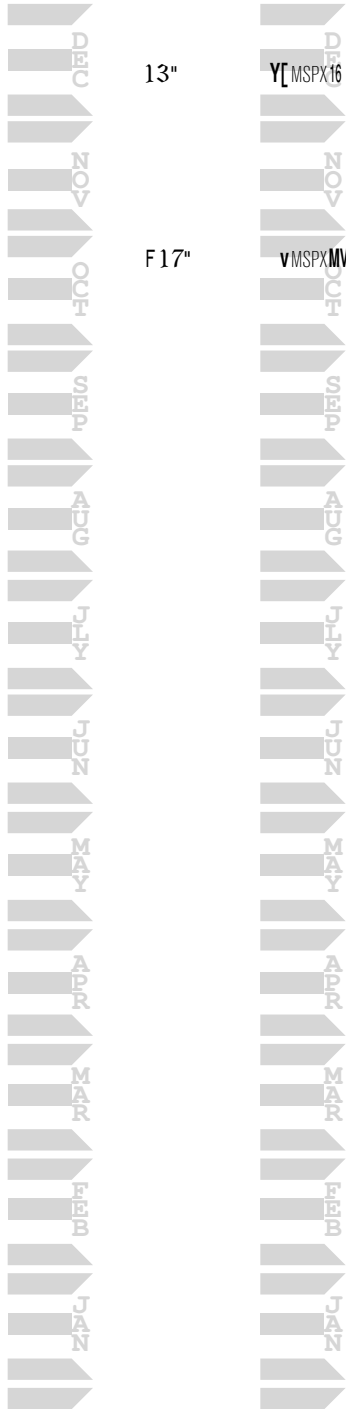


XX p80

QUALITY ROAD  
CHARLIE MY GIRL-UNBRIDLED'S SONG PA  
2 RACES 17

PINATUBO M 14  
7 RACES 18

1 Race 2  
7 RACES 19





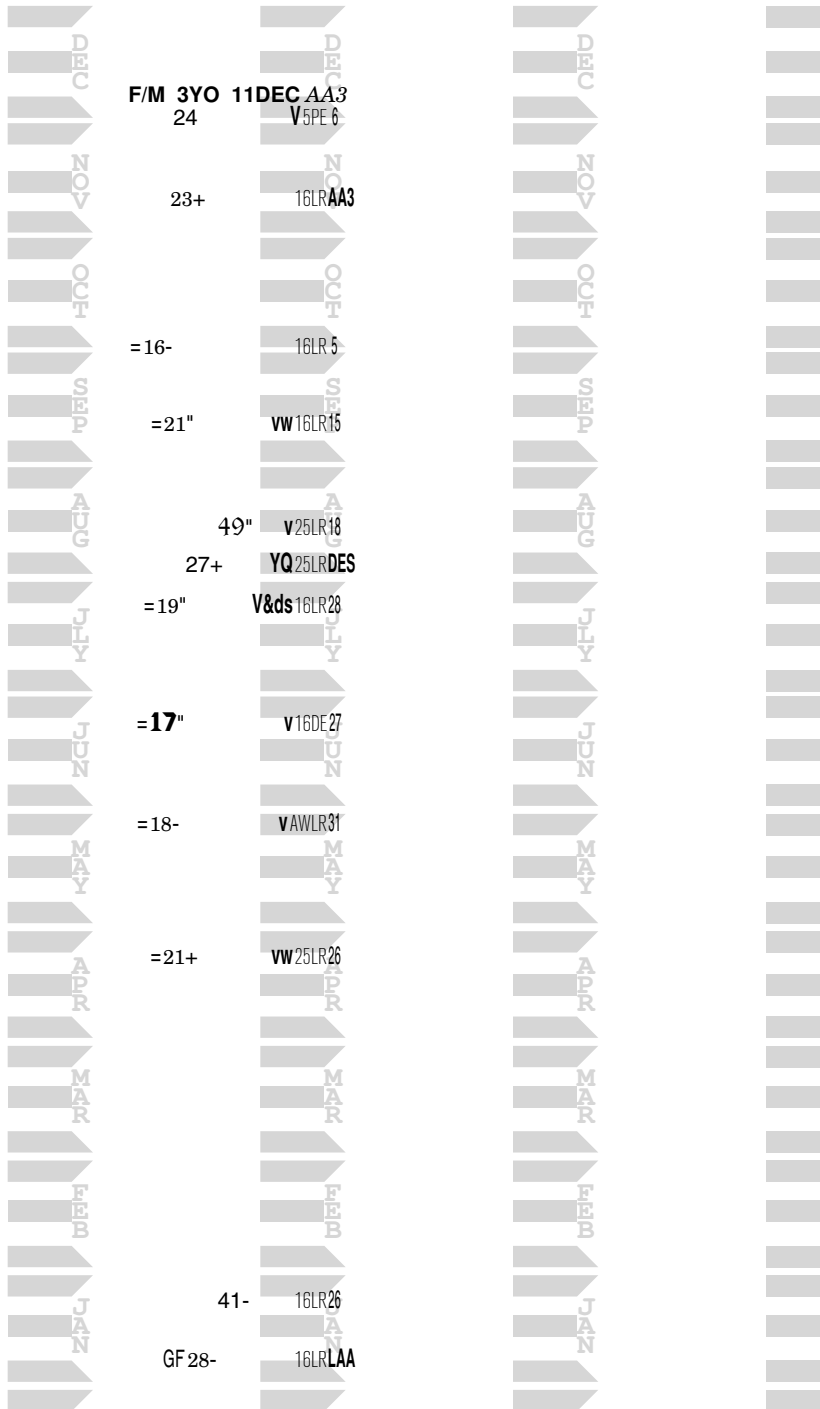
XX p81

PLAN  
TOP COAT-DIXIELAND BAND MD

POLISHED GAL F 16

1 Race 2

12 RACES 19



XX p82

GRAYDAR  
DAZED-IR-DANEHILL KY

POTRA LIZA F 15

1 Race 2

11 RACES 18

9 RACES 19

DEC	
NOV	◇ 18+
OCT	◇ 24"
SEP	◇ 22
AUG	g◇ 22
JUL	=@4+
JUN	=17-
MAY	=23
APR	=19+
MAR	=19"
FEB	=@4-
JAN	F=45-V[&jm 20GP MSM

DEC	V6WO 9
NOV	v10WO 18
OCT	Yw 12WO 27
SEP	8WO 12
AUG	10WO 22
JUL	v12WO 2
JUN	16WO 29
MAY	v25WO 6
APR	vB 20WO 26
MAR	Yt 20GP JMe
FEB	
JAN	

DEC	F/M 4YO 11DEC JNo
NOV	9) vAWGP 7
OCT	
SEP	17- awPX 13
AUG	10" vAWPX 14
JUL	1@ wAWMT 2
JUN	1@ vwAWMT 13
MAY	g14 VwawPX 11
APR	1@+ vw12MT JNo
MAR	
FEB	14" Vwsf&JN 6GP 24
JAN	r19+ Vw6GP 24

DEC	
NOV	
OCT	
SEP	
AUG	
JUL	
JUN	
MAY	
APR	
MAR	
FEB	
JAN	

XX p83

VIOLENCE  
RED VELVET-CITY ZIP KY

RED HOT DAME F 16

1 Race 2

3 RACES 18

5 RACES 19

r=16-



VtfAWGP15

F/M 3YO 11DEC MJT



^=21-



vAWAQ11

rg' 32+



V16AQ22

g18-



vwMSGwTAP

v16LR MJT

gF^=19+



vwMSGwTAP



=21"



Ytf30Sr 1

=22"



YAWEL 4

.21"



vAWIR MJM



vAWIR MJM



vAWIR MJM



vAWIR MJM



vAWIR MJM



vAWIR MJM



Ragozin -- The Sheets <sup>TM 4410^0</sup>

Hip 336

XX p84

DAAHER  
HASILAH-HARD SPUN KY

RISAALAAT F 16

1 Race 2

2 RACES 18

4 RACES 19

^26

Y MSPX 17

F/M 3YO 11 DEC JNs

F 17"

[ MSPX MVP

14

w 16PX JNs

21-

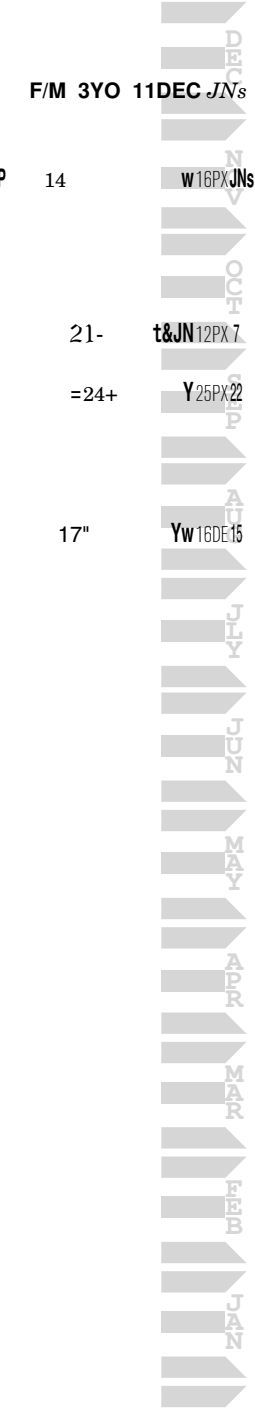
t&JN 12PX 7

=24+

Y 25PX 22

17"

Yw 16DE 15



XX p85

POSEIDON'S WARRIOR  
PEACETIME MISSY-PEACE RULES FL

ROCKYS WARRIOR M 16

1 Race 2

4 RACES 18

7 RACES 19

F21-



**MALE 3YO 11DEC TCK**

r.16"



Ys<sub>awPX 1</sub>

16"

awPX 9

927+



23-

12+



v<sub>awPX 15</sub>

9.27+



8



Vw<sub>AWPE 5</sub>

15-

w<sub>25DE 12</sub>

16

25PE TCK

19+

w&TK<sub>25PE 4</sub>



Ragozin -- The Sheets <sup>TM</sup> 4410<sup>AO</sup>

Hip 339

**XX p86**

FORT PRADO  
PAPER CUT-NOTEBOOK NY

**ROSSIE VAL M 14**

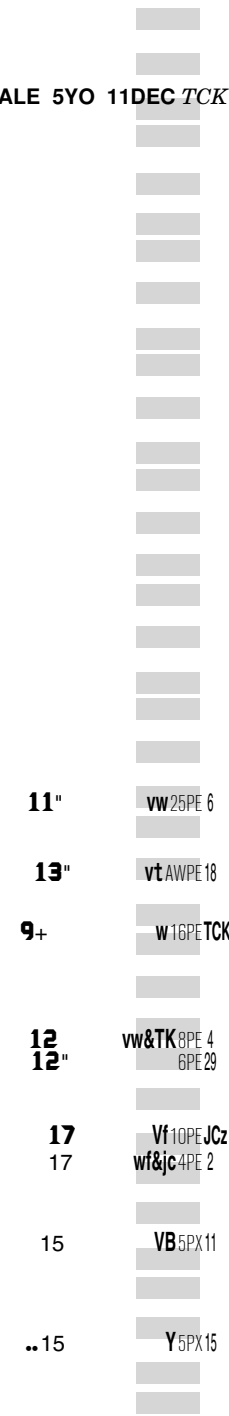
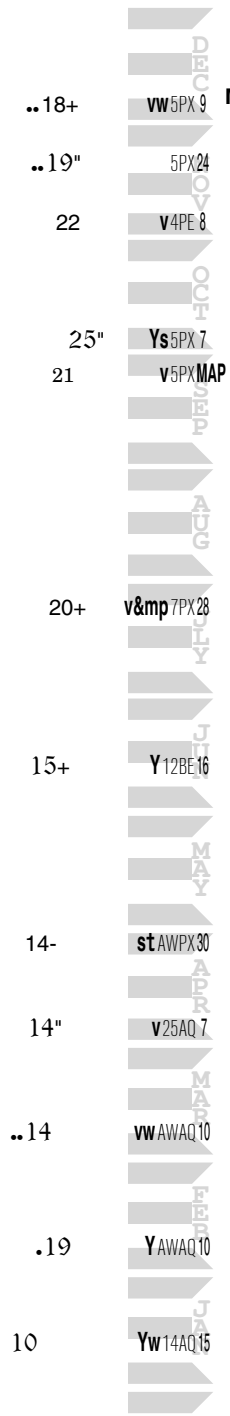
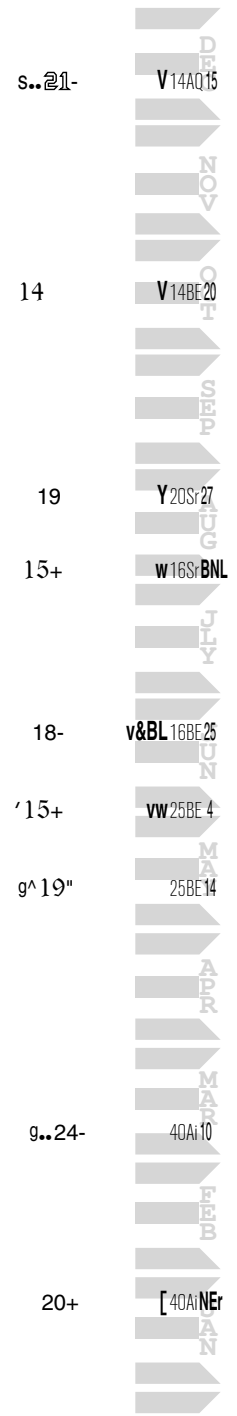
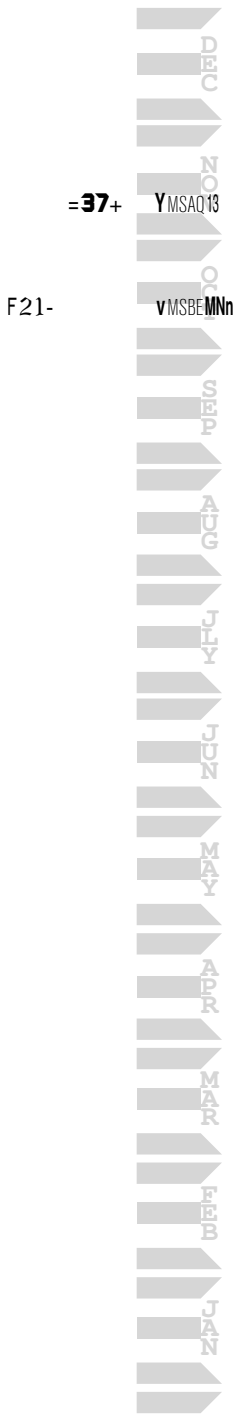
**1 Race 2**

2 RACES 16

9 RACES 17

12 RACES 18

9 RACES 19



XX p87

KITTEN'S JOY  
CRUMBS OF COMFORT-PULPIT KY

SANDY LANE KITTEN M 15

1 Race 2

8 RACES 19

DEC  
NOV  
OCT  
SEP  
AUG  
JULY  
JUN  
MAY  
APR  
MAR  
FEB  
JAN

DEC  
NOV  
OCT  
SEP  
AUG  
JULY  
JUN  
MAY  
APR  
MAR  
FEB  
JAN

MALE 4YO 11DEC MJT  
◇ 21 YMSSTP 4

=15+

g=13-

=16

.21"

=13+

=16-

gF.=17-

DEC  
NOV  
OCT  
SEP  
AUG  
JULY  
JUN  
MAY  
APR  
MAR  
FEB  
JAN

11DEC MJT  
YMSSTP 4

v40AQ10

v40BE16

YMSBE15

QMSJ MJT

vt[&MT40Sr11

vMSCD19

vMSKEDGn

DEC  
NOV  
OCT  
SEP  
AUG  
JULY  
JUN  
MAY  
APR  
MAR  
FEB  
JAN

Ragozin -- The Sheets <sup>TM</sup> 4410^0

Hip 342

XX p88

ORIENTATE  
LEED ME HOME-SECRET HELLO VA

SECRET OR NOT F 12

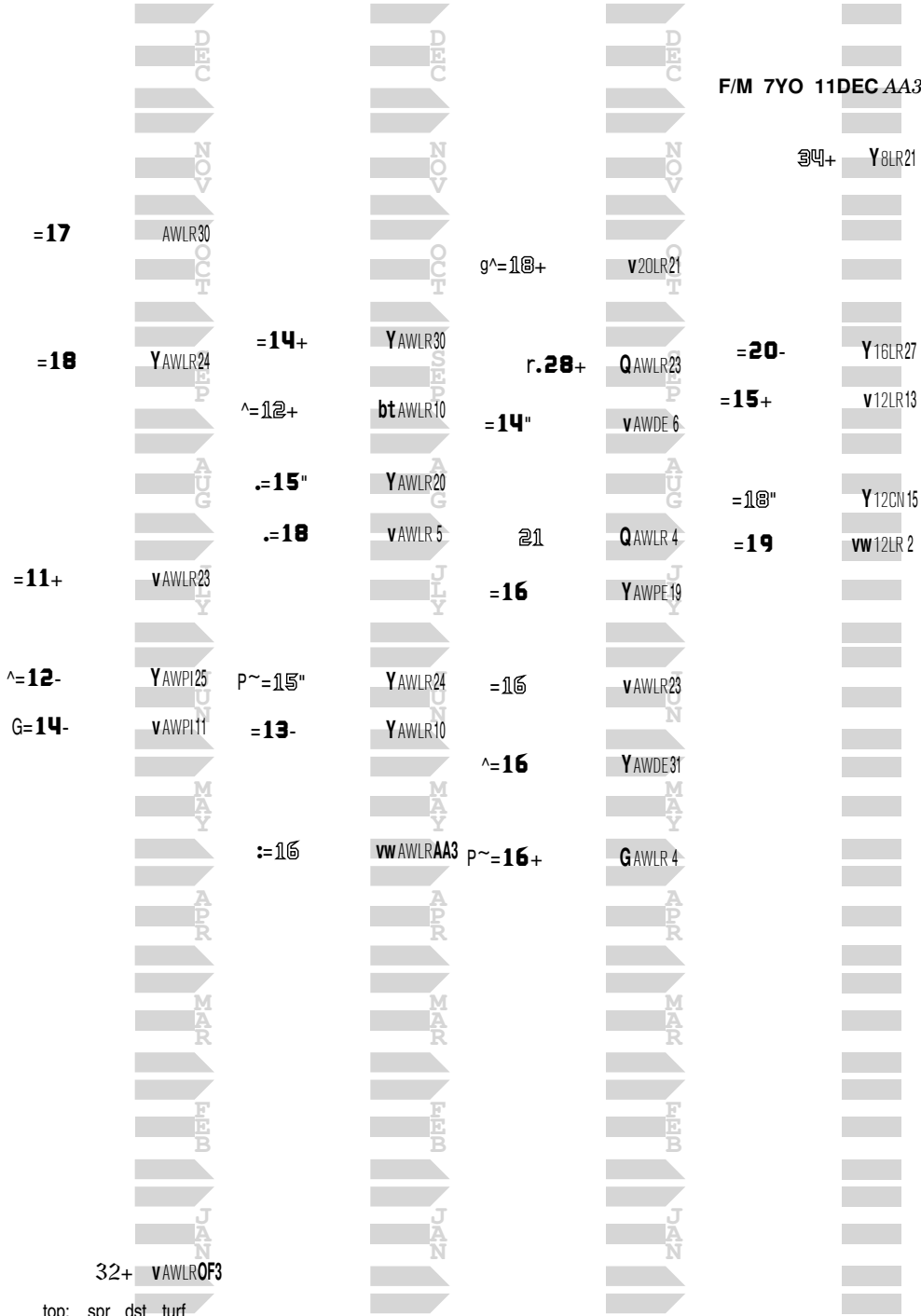
1 Race 2

6 RACES 16

7 RACES 17

8 RACES 18

5 RACES 19



F/M 7YO 11DEC AA3

34+ Y8LR21

=20- Y16LR27

=15+ v12LR13

=18" Y12CN15

=19 vw12LR 2

top: spr dst turf  
3yo> 14-  
2yo> 23 16 (F)



XX p89	MIDSHIPMAN MAGIC BOX-ELUSIVE QUALITY FL	SHIPMANS MAGIC	F 15	1 Race 2
2 RACES 17	8 RACES 18	9 RACES 19		
27-	.27-	Y12LRHM	F/M 4YO 11DEC JJM	
F30"	^=17" =19+	Ywtf&dm15PE 8 t25PE 1	25- vt5PE JJM	
	◇=24"	Yf16Pd 5	◇17" 6Pd15	
			◇41- Y6Pd NJC	
			◇14" 6Pd17	
			=31" Y10CN 9	
			^=25+ V16DE25	
	22"	YwQt15PE29	=10+ Y12SU29	
			=14" 16DE 5	
			G=18" V16LR27	
	934	Y15PE16		
	.42-	s25PE22		
	28	t25PE 2		

**XX p90**

BUFFUM  
HONGKONG TOUR-BROKEN VOW MD

**STORMIN HONGKONG M 16**

**1 Race 2**

6 RACES 18

14 RACES 19

**MALE 3YO 11DEC CAG**

^10-

15+

G^17+

27-

25+

9F.28-

g 17-

**24+**

17

15

.14-

18"

16+

^21-

15

.19-

/16+

G^15-

9^15+

xx

**T**25LR16

**Y**25LR1

**Y**40PX 7

AWGT19

wAWTI 2

fAWGT23

vAWLR 3

50PX16

v32LR12

V50LR24

32LR 3

25LR 3

v50LR20

wAWLR CAG



XX p91	STORMY ATLANTIC SACRED FEATHER-CARSON CITY KY	STORMY FORECAST M 14	1 Race 2
2 RACES 16	2 RACES 17	13 RACES 18	12 RACES 19
		26-	v12GP29
	17		<b>MALE 5YO 11DEC DnN</b>
		G^19	vQ16LR3
		19+	V15PE10
21-		17+	vw25PE19
		22-	v25PX4
		^15"	wB25PE18
F22+		15"	20PX6
		=22-	Y[16SUDNn ^=14+
		=20-	Y16SUMEG =18
		.21	Q40BERDo 19+
			g=22" 16LRDN
	21+	.14	Y&RD25OP29
	GELDED	.19+	VMSOP1 P~=16"
		19	Yt40OP21 =18+
			=20" Yst16GP24

Ragozin -- The Sheets <sup>TM 4410^0</sup>

XX p4

SUPER NINETY NINE  
MY SONATA-NOBLE CAUSEWAY PA

SUPER DONNA G F 17

1 Race 3

7 RACES 19

F/M 2YO 11DEC HIM  
24+

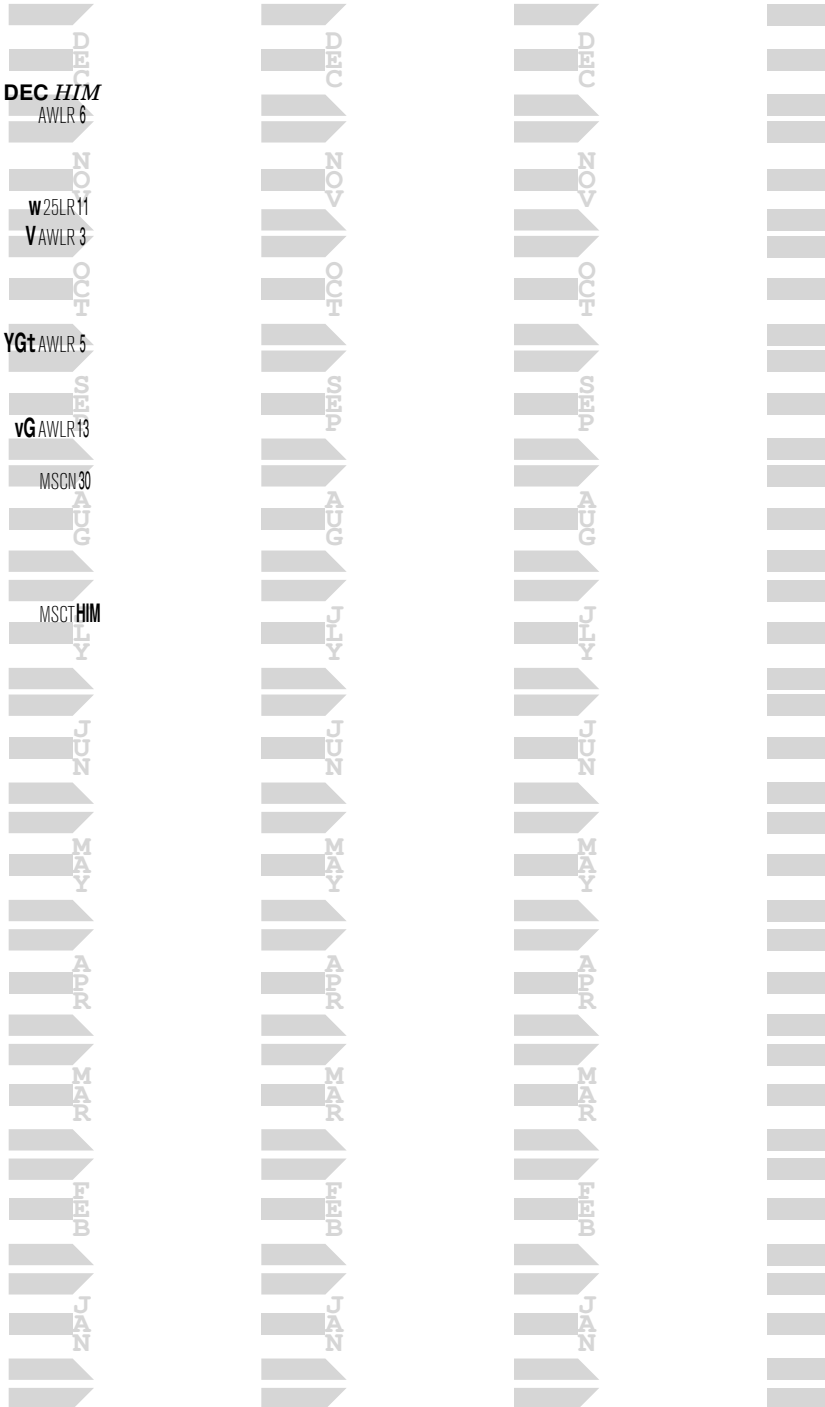
23-  
19"

=21

P~21

=21

F 28"



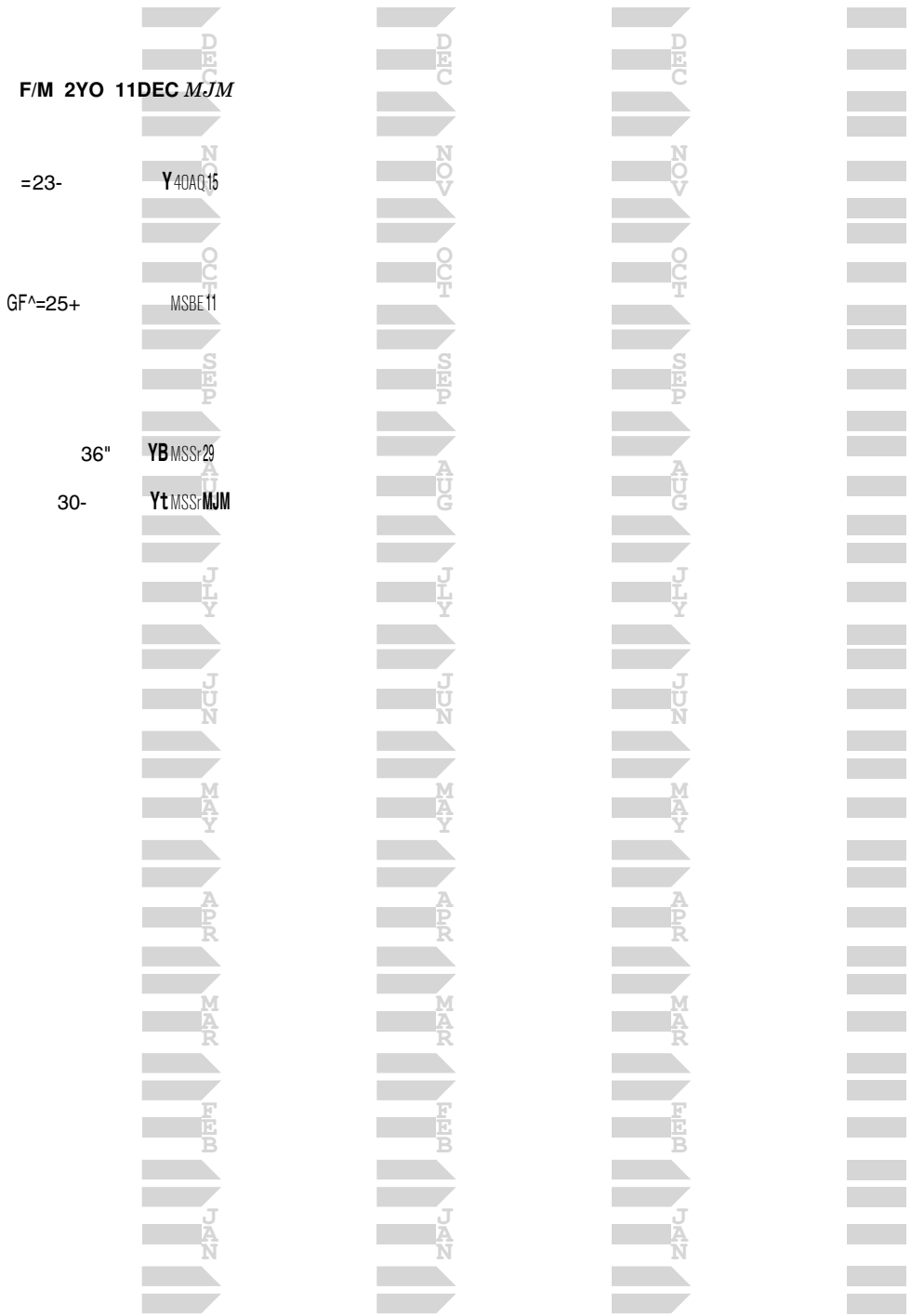
XX p93

LEA  
SILVER VALLEY-SILVER TRAIN NY

SURPRISE ARRIVAL F 17

1 Race 2

4 RACES 19



XX p94

TAKE CHARGE INDY  
BIG TEAM LITTLE ME-GIANT'S CAUSEWAY KY

TAKE ME HOME

F 16

1 Race 2

3 RACES 18

13 RACES 19

20-

MSTA22

F/M 3YO 11DEC BLK

r^18+

wawPE BLK

24+

vMSKE24

r.19-

vw&bk5PE31

F 16"

YRG MSPd THm

21

VsT 16PE20

^21-

vw 16PE24

=21-

16PE 8

.19-

w25PE MS2

◇24-

16Pd30

◇24-

Y25Pd15

25

Y35TA24

23

v32TA16

19-

V75TA24

19

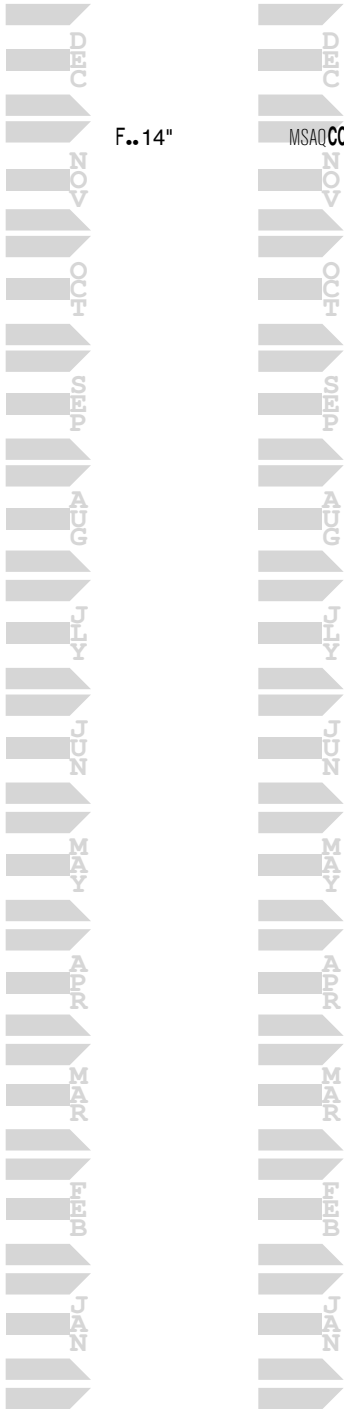
Y75TA 2

16-

VwfMSTA12

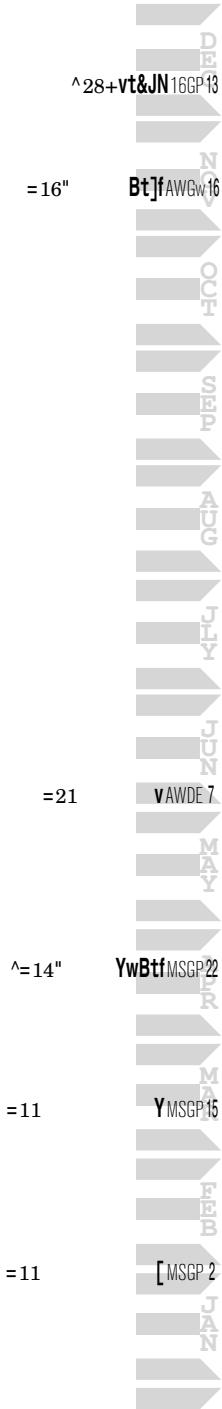
XX p95

BROKEN VOW  
TEARS OF JOY-MT.LIVERMORE KY  
1 RACE 17



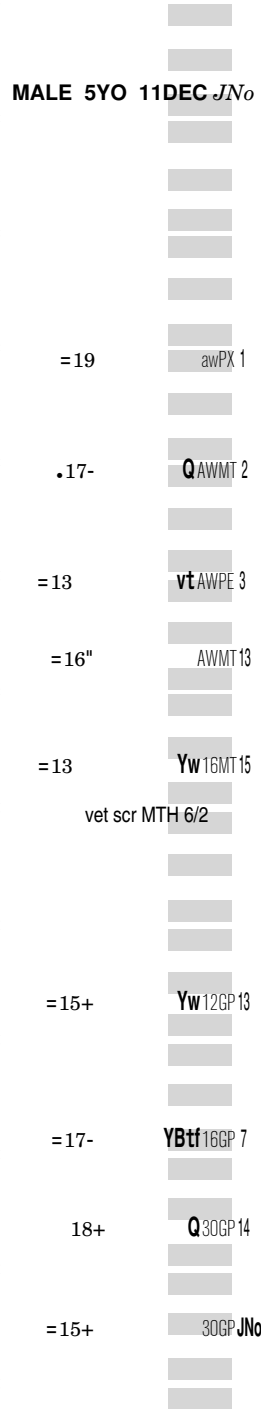
TEAK M 14

6 RACES 18



1 Race 2

9 RACES 19



XX p96

WELL SPELLED  
PRINCESS PURRSALOT-SIR CAT PA

THE COLOR GRAY F 17

1 Race 2

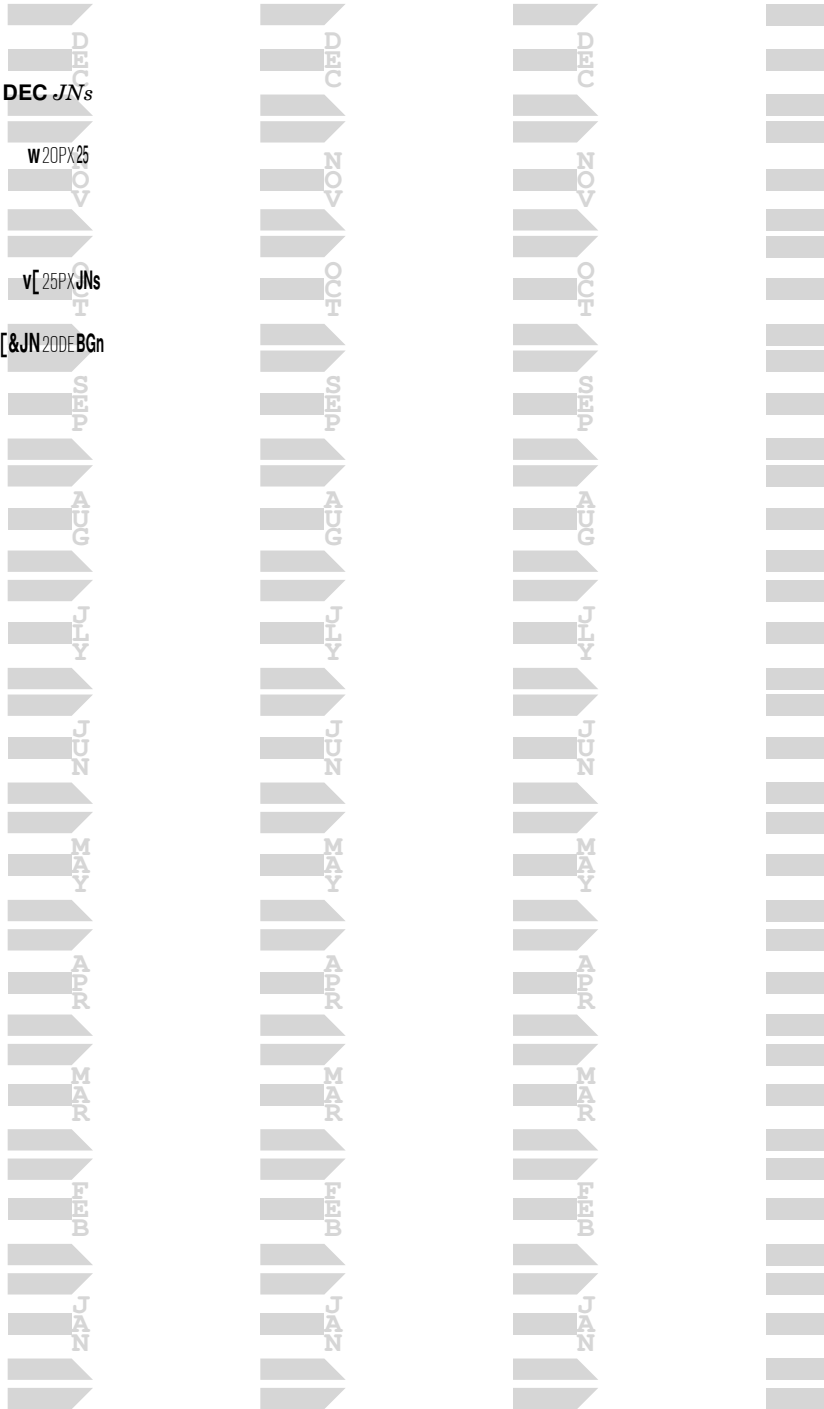
3 RACES 19

F/M 2YO 11DEC JNs

27" W20PX25

27" v[25PXJNs

30 v[&JN20DEBGn





Ragozin -- The Sheets <sup>TM</sup> 4410^0

Hip 354

**XX p97**

KODIAK KOWBOY  
CLASSY TOO-THE CLIFF'S EDGE MN

**THE GREAT CASBY M 13**

**1 Race 2**

5 RACES 16

10 RACES 17

13 RACES 18

13 RACES 19

14

Y30GP JGo

DEC

**..16**

v20PX 9

**MALE 6YO 11DEC J-JM**  
^13+ vw16PE JIM

G~17  
no contest

vAWLR JNs  
LRL 11/19

**16+**

20PX 20

20LR 4

**.18-**

t&jm 16PE 7

14"  
**.13+**

25PE JNs

**14+**

vstf 25PE 26

r.14

vAVHA HHR

**12"**

25PE 27

15+

vw25CB 4

**16**

AWCB 2

15+

Vs AWCB 21

^=18-

Y AWCB 20

Yt 12CB 13

**13**

v20DE 27

19

Ywt AWCB 31

18-

vw AWCB 16

~=16+

vt 25CB 16

**=16**

v AWCB 3

^12

v25LR 4

25

v10CB DWV

15-

v25CB 1

**.15-**

vQ AWCB 9

**10+**

V25LR 31

19

Y20CB DWV

20

v AWCB DWV

**.13**

vw25LR 3

**..17-**

wsG AWPX 10

**17-**

AWPX 17

g' 19

VAWLR KMe

17

vsf 30GP 24

^13

vs AWPX 19

21"

Y&KM 25LR 23

/11+

Vwt 25LR PSI

14

YGtf 30GP 12

13+

^13+

Vw AWPX 20

AWPX 9

14"

Y&ps 20LR 5

top: spr dst turf  
2yo> 27- 23- (F)

XX p98

STAY THIRSTY  
FUJIANA-FUSAICHI PEGASUS NY

THIRSTY GAL F 15

1 Race 2

6 RACES 18

10 RACES 19

DEC	
NOV	
OCT	G..20
SEP	G.25-
AUG	914"
JULY	15
JUN	'17+
MAY	F.35
APR	
MAR	
FEB	
JAN	

DEC	
NOV	V40AQ 28
OCT	YAWAQ 3
SEP	wAWFLCET
AUG	w&CE 25BE 8
JULY	V 25Sr 13
JUN	V[ 25Sr DMR
MAY	
APR	
MAR	
FEB	
JAN	

F/M 4YO 11DEC SAL

DEC	
NOV	21
OCT	25+
SEP	25+
AUG	25+
JULY	25+
JUN	28"
MAY	20+
APR	r.20+
MAR	'32"
FEB	23
JAN	..14

DEC	
NOV	V5PX 23
OCT	v5PX SAL
SEP	v&SL 5PX 23
AUG	Yt 7PX 27
JULY	fawPX 29
JUN	Ys 12PX 27
MAY	v 16PX 12
APR	
MAR	YawPX 5
FEB	VfawPX MCA
JAN	Vw&ma 12PX 15

XX p99

GIANT'S CAUSEWAY  
MY LIMIT-WAGON LIMIT KY

THOMOND PARK M 16

1 Race 2

2 RACES 18

11 RACES 19

P~ = 23-

^ = 20+

Month	Year	Age	Sex	Weight	Other
DEC	11	3YO	MALE		MJM
NOV	11	22"	r	30AQ	1
OCT	11	16-		30AQ	9
SEP	11	16"	G	50BE	4
AUG	11	17		s	AWLR21
JULY	11	16"	P	40S	8
JUN	11	16+	GP	50BE	30
MAY	11	16"	GP	v	Sf 40BE15
APR	11	14"	~	f	50BE MJM
MAR	11	1@-	^	s	&MM 40BE 9
FEB	11	14"		AWTA	8
JAN	11	18+	F	w	]MSTA 6

XX p100

TIZNOW  
SEEK TO DANCE-GONE WEST KY

7 RACES 18

DEC	r.25-	Vf7PX15
NOV		
OCT	r.24-	12PX 5
SEP	22"	w10PX 9
AUG	28+	Ys20PX 4
JULY	~32	20PX 7
JUN	=29"	sMSPX18
MAY	F28	QS MSPX KAD
APR		
MAR		
FEB		
JAN		

TIZZY DANCER F 15

7 RACES 19

DEC		F/M 4YO 11DEC KAD
NOV		
OCT	r.26"	V5PE31
SEP	26"	VW5PE28
AUG	^22	w5PE28
JULY	26"	Vf7MT27
JUN	22-	V7MT 5
MAY		
APR		
MAR	28+	V7PX25
FEB	27"	v7PX11
JAN		

1 Race 2

DEC	
NOV	
OCT	
SEP	
AUG	
JULY	
JUN	
MAY	
APR	
MAR	
FEB	
JAN	

**XX p101**

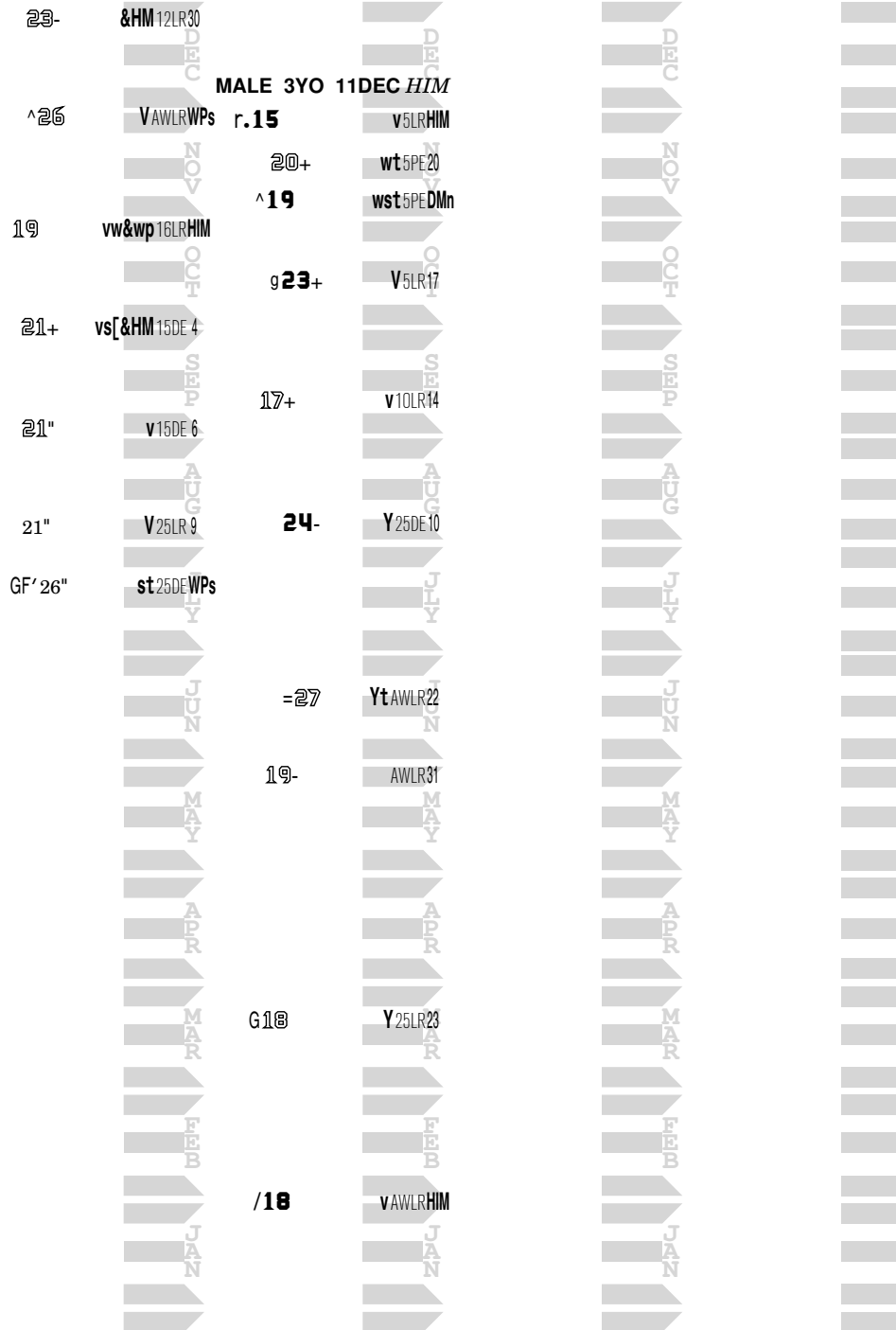
WARRIOR'S REWARD  
SISTER DYER-PULPIT KY

**TOP HAT WARRIOR M 16**

**1 Race 2**

7 RACES 18

10 RACES 19

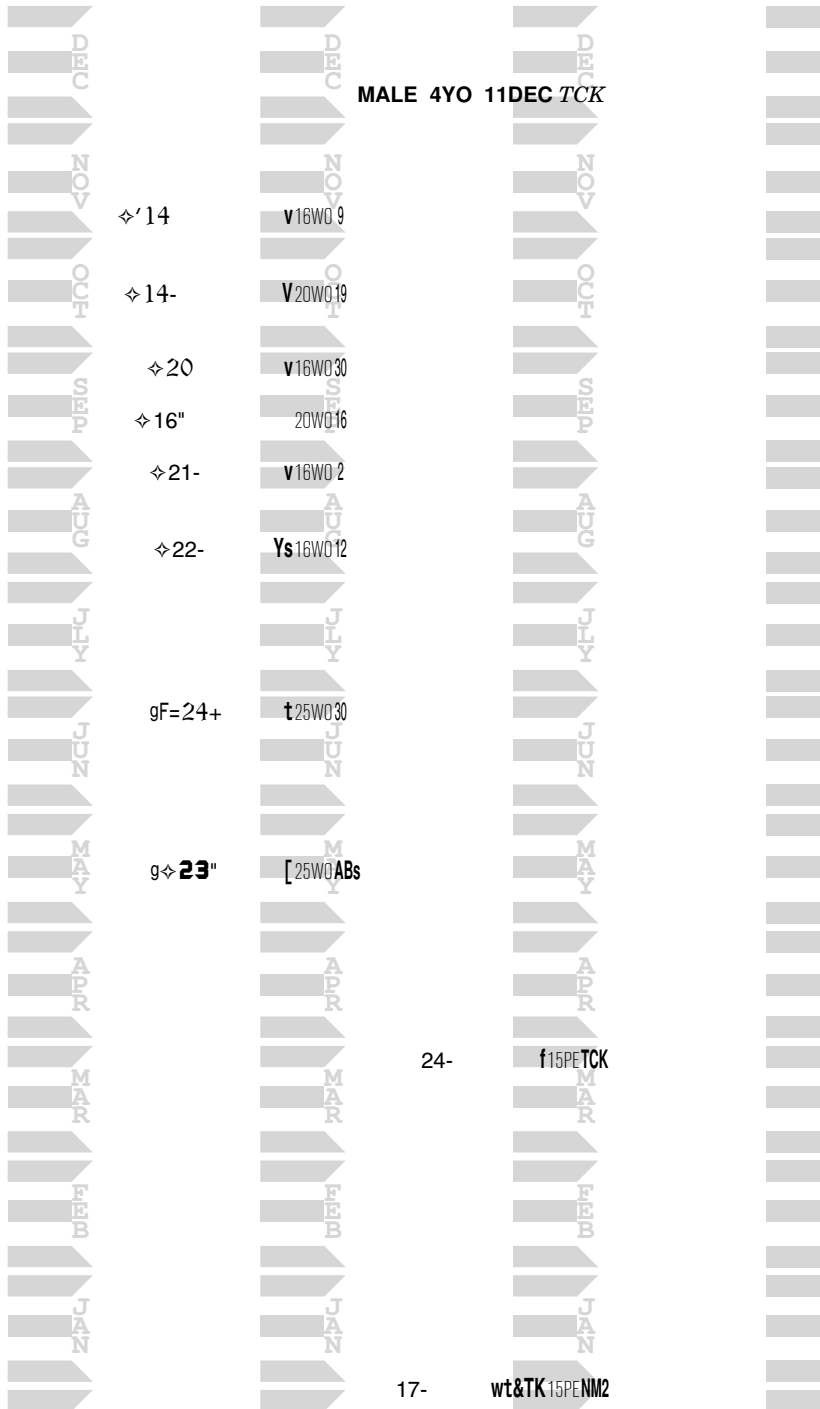


XX p102

NONIOS  
TRUELY UNREAL-UNREAL ZEAL ON  
8 RACES 18

TRUTH SERUM M 15  
2 RACES 19

1 Race 2



XX p103

PIONEER OF THE NILE  
HOLY BUBBETTE-HOLY BULL KY

WILL'S PIONEER M 15

1 Race 2

7 RACES 18

6 RACES 19

Month	Age	Sex	Weight	Condition	Notes
DEC	11	MALE	15	CAG	
NOV	15+	r.	15+	CAG	
OCT	11+	r.	11+		
SEP	20"	Y	AWCD 14		
AUG	11+	w	AWEL 3		
JULY					
JUN	13"		AWCD 28		
MAY					
APR	12	w	MSOP 14		
MAR	F 13"		MSOP SMA		
FEB					
JAN					

MALE 4YO 11 DEC CAG

r. 15+

aw PX CAG

13+

aw PX 15

10

vw 25 DE 12

22+

YT AWMT 8

9.16

YQ AWGP 4

17

Yf AWGP J No

XX p104

EXCLUSIVE QUALITY  
WISHFUL MELODY-SONGANDAPRAYER FL

WISHFUL QUALITY F 16

1 Race 2

1 RACE 18

7 RACES 19

F12+



F/M 3YO 11DEC SAL

13+

WawPX 25

19

VawPX 9

r.14+

vw40PX SAL

16+

w&SL25PX 8

16"

v50PX 23

17+

w50MT 1

22+

YAVMT 3





**XX p105**

KANTHAROS  
LOVE IN BLOOM-MORE THAN READY FL

**W W SPRINGTIME M 16**

**1 Race 2**

4 RACES 18

9 RACES 19

17

AWGP19

**MALE 3YO 11DEC TCK**

14+

wtjMSGw24

.23-

v50PXTCK

13

V50PX19

◊23"

MSAP 1

.14-

vwQAVMT 2

F◊24"

YMSAP SB

14-

YAVMT 3

12

AVMT14

13"

vAVMTJNo

16-

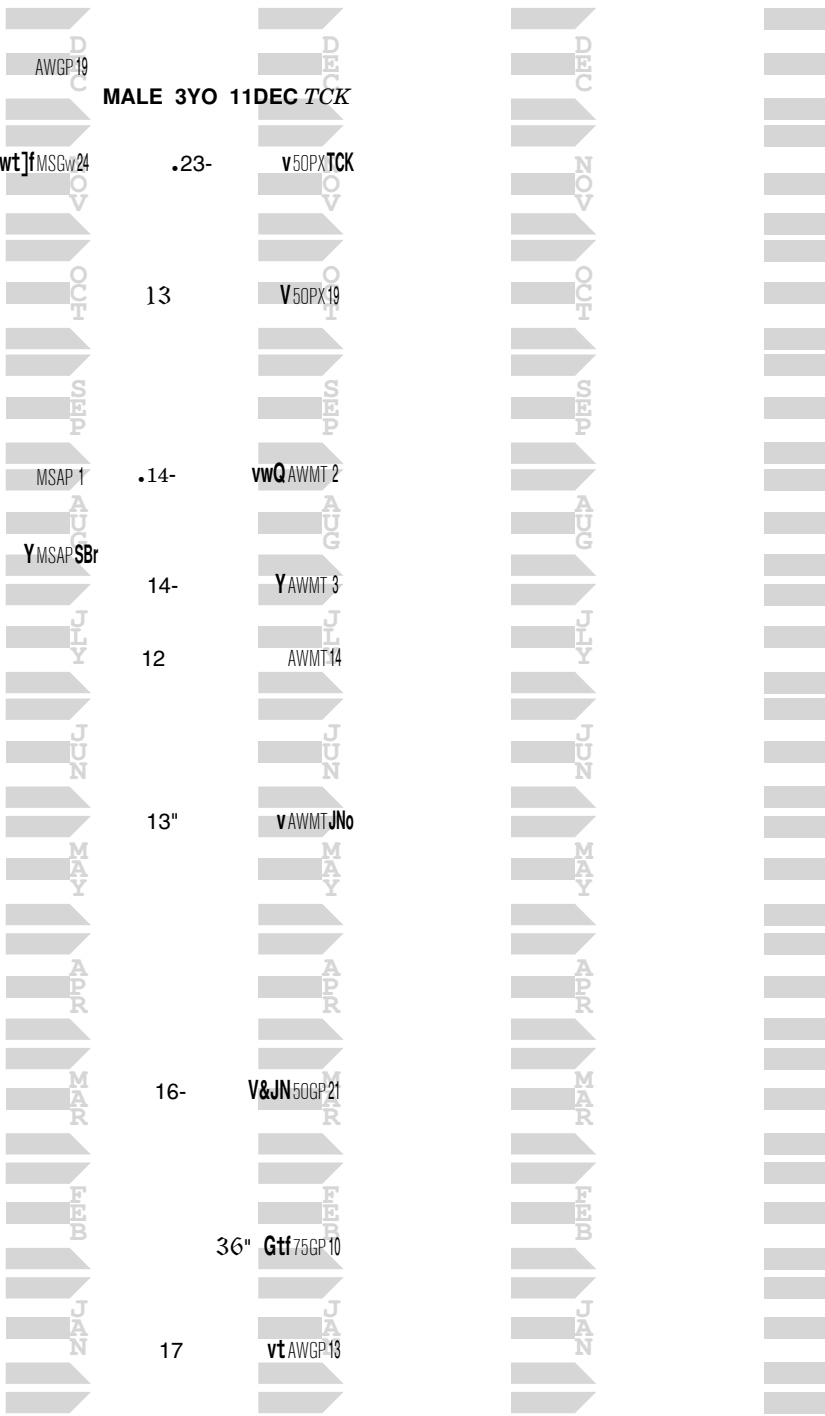
V&JN50GP 21

36"

Gtf75GP 10

17

vtAWGP 13



Ragozin -- The Sheets™ 4410^0

Hip 367

XX p106

BROKEN VOW  
PAGE DANCER-HENNESSY KY

PAPA ZULU M 13

1 Race 2

8 RACES 16

4 RACES 17

11 RACES 18

7 RACES 19

gP~ = 15"

YAWGP26

34"

vAWLR16

.14+

v62AQ21

MALE 6YO 11DEC TCK

10"

tAWCD19

r^2@-

vawPX 1

7+

vtAWKE27

15+

YQAWLRKRy

g^ 16

AWLR10

.15

vwt16PE 7

10"

VwAWCDWBy

13"

Yw@PETCK

12

VAWWQ20

6-

VwAWLR16

14"

62Sr26

g 16

GAWWQ 2

13+

YAWIN14

16"

wMSWQ23

15

YfAWMT26

913+

v12BE19

F 14+

vMSW@RBr

11

vwAWPX24

G17-

12BEDGn

13"

vAWPX24

r.10+

VGAWGP22

11-

v5OLR28

8+

AWGP28

^ 19

AWLR28

12"

v5OLR26

.15-

vAWLR12

top: spr dst turf  
2yo> unraced